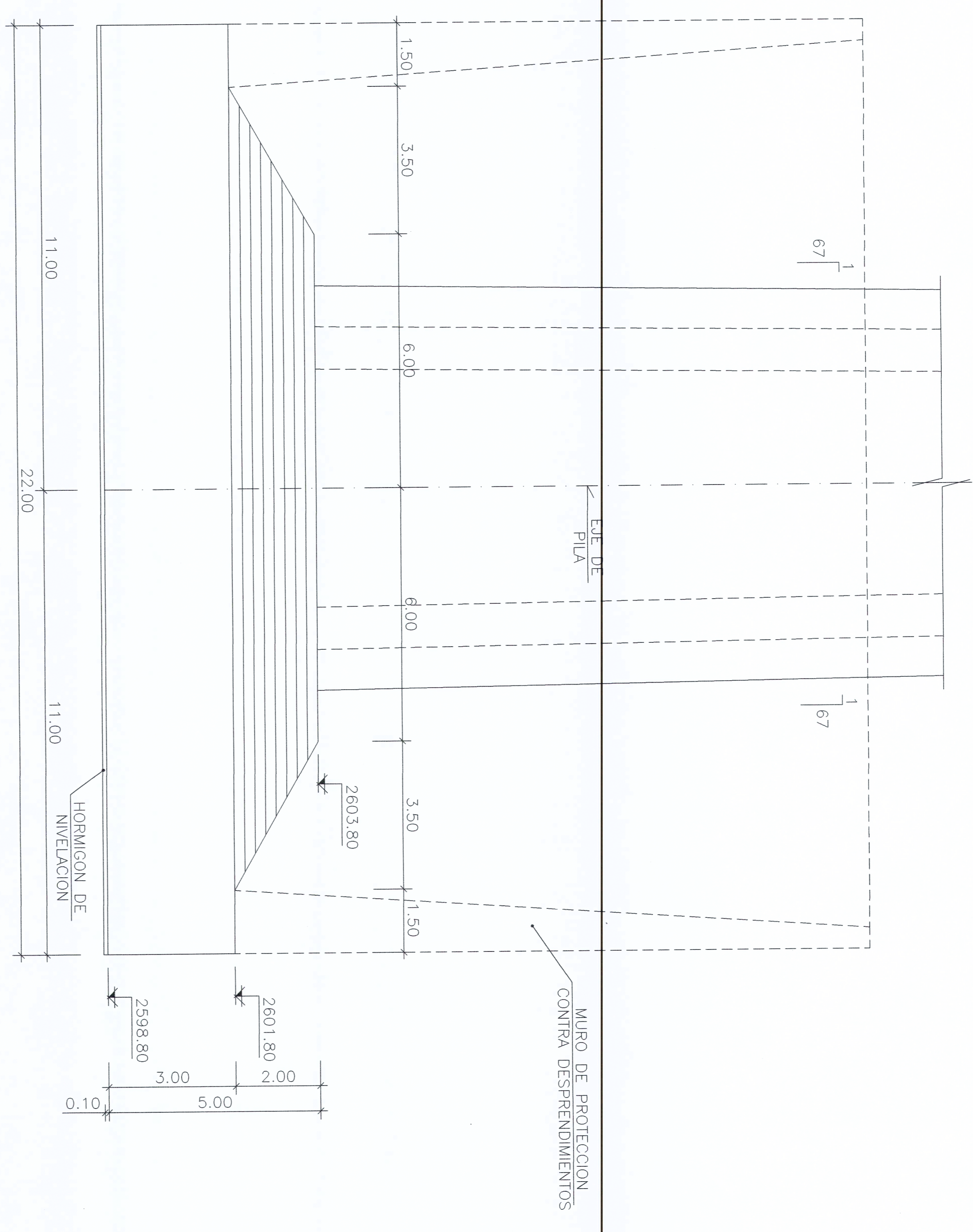
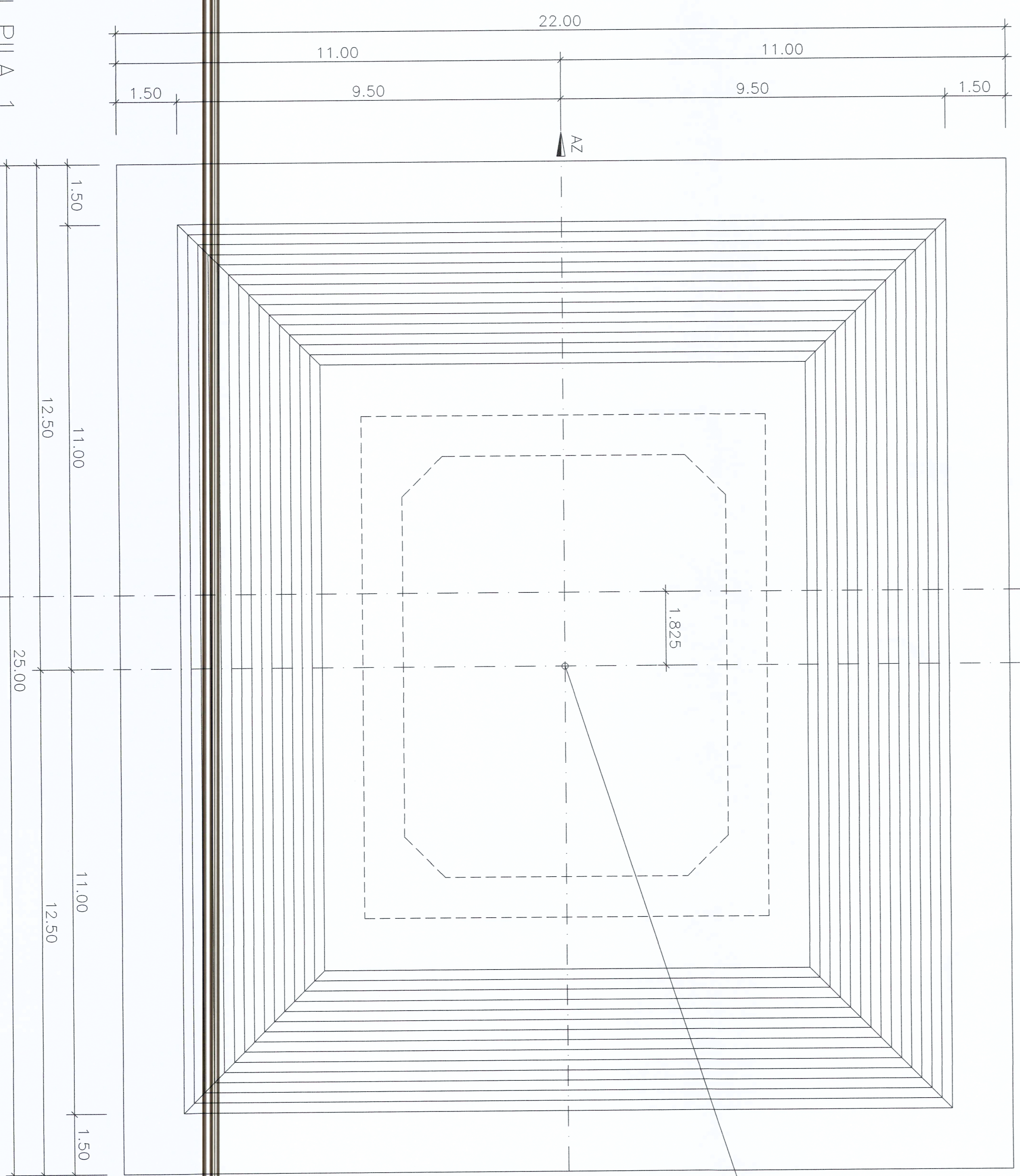


ALZADO FRONTAL
CIMENTACION PILA 1
ESCALA 1:100



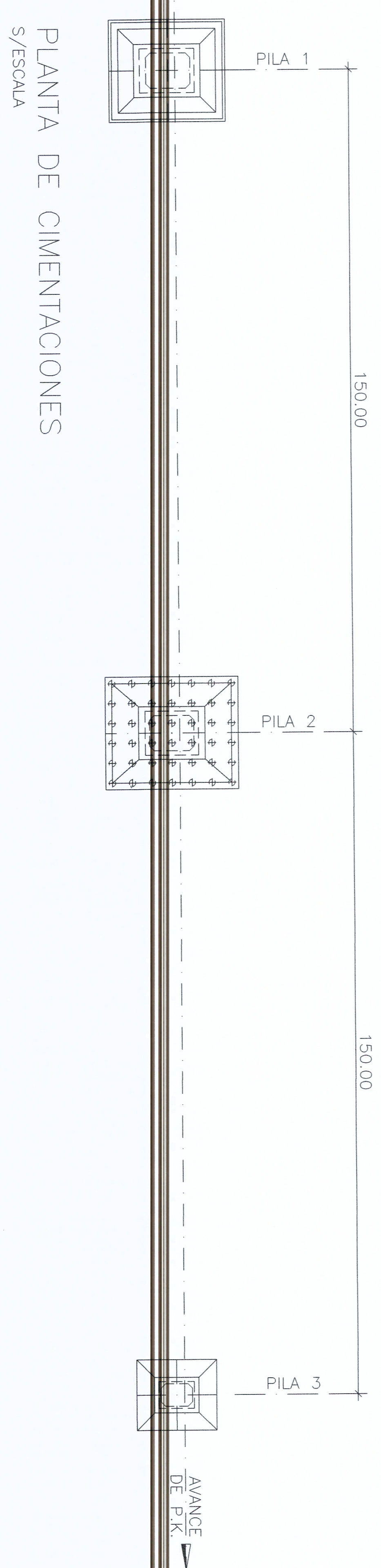
ALZADO LATERAL
CIMENTACION PILA 1
ESCALA 1:100



PLANTA CIMENTACION PILA 1
ESCALA 1:100

P.K. = 0+4830.000
X = 507800.810
Y = 9378880.210
Az = 27.91599

TABLA DE CANTIDADES	CIMENTACION COLUMNAS
Hormigon simple $f_c=180$ Kg/cm ²	226.95 m ³
Hormigon simple $f_c=350$ Kg/cm ² (Pilotes)	5.340.96 m ³
Hormigon simple $f_c=350$ Kg/cm ² (Zapatas)	6.975.85 m ³
Acero de refuerzo corrugado $F_y=4.200$ Kg/cm ²	1.652.873.00 Kg



PLANTA DE CIMENTACIONES
S/ESCALA