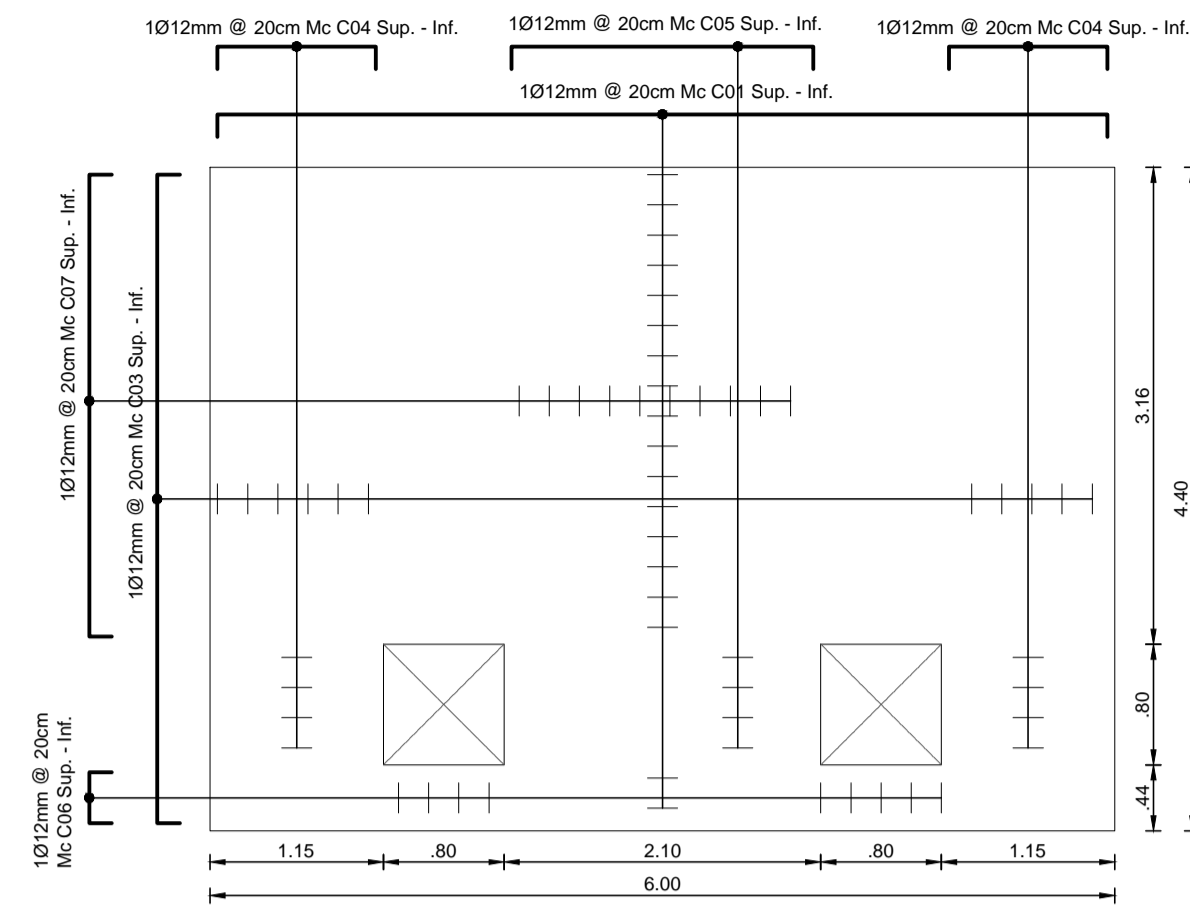
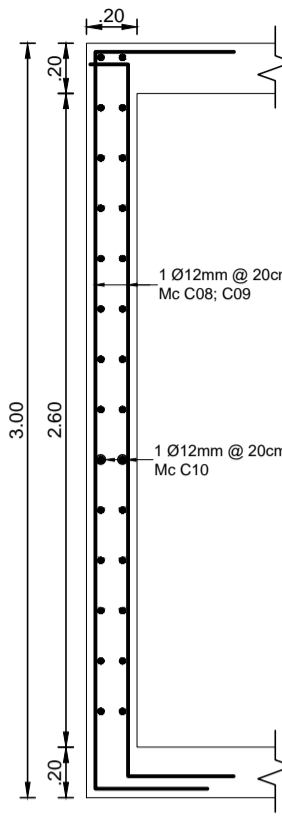


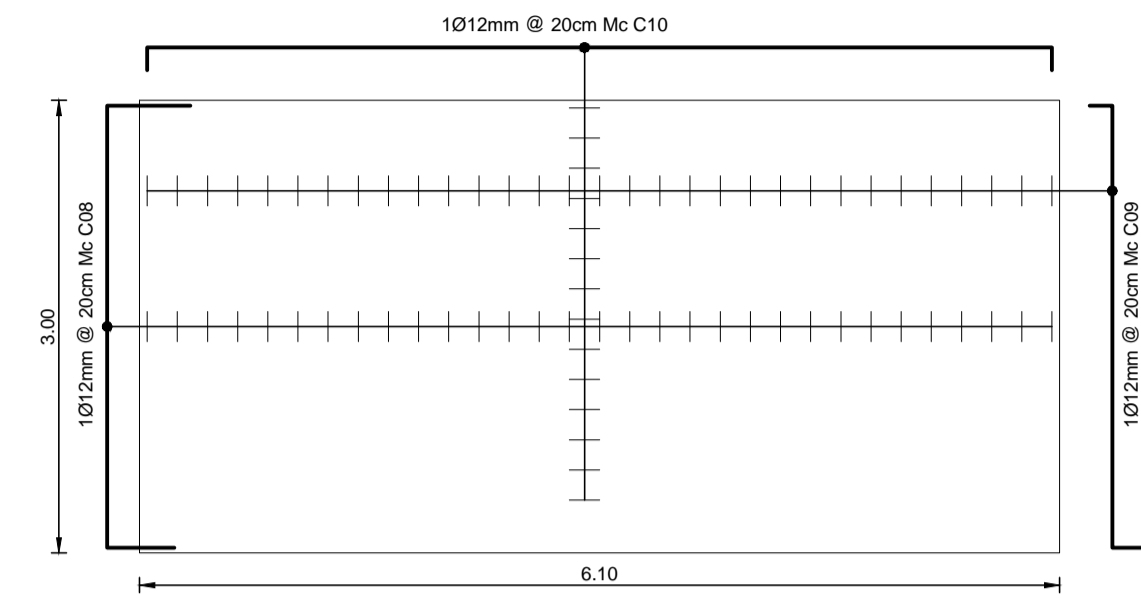
CISTERNA LOSA INFERIOR
ESC 1:50



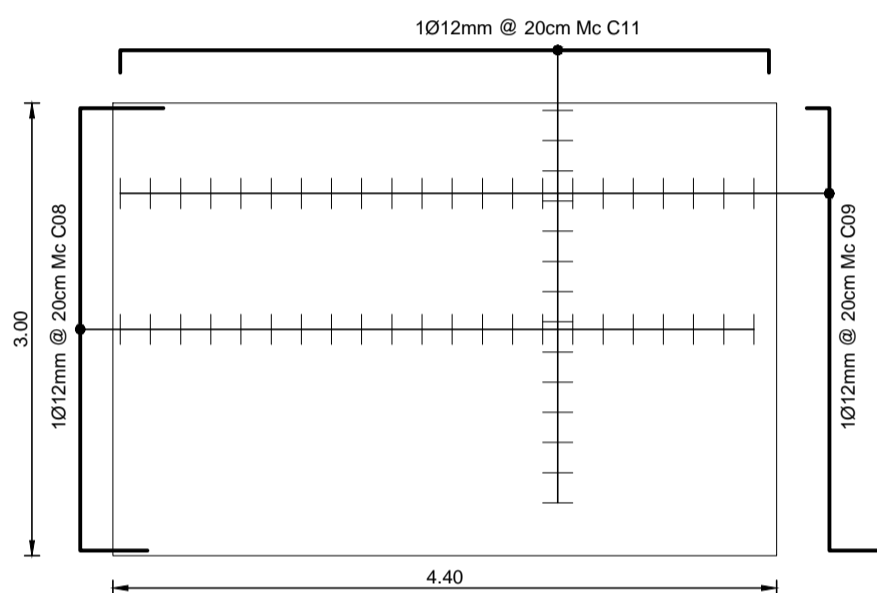
CISTERNA LOSA SUPERIOR
ESC 1:50



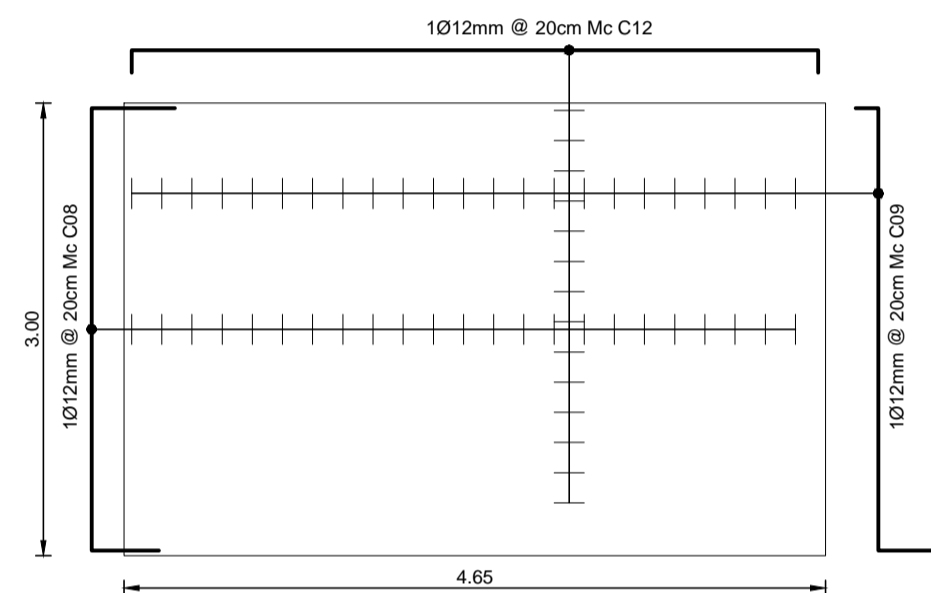
CORTE A-A'
ESC 1:30



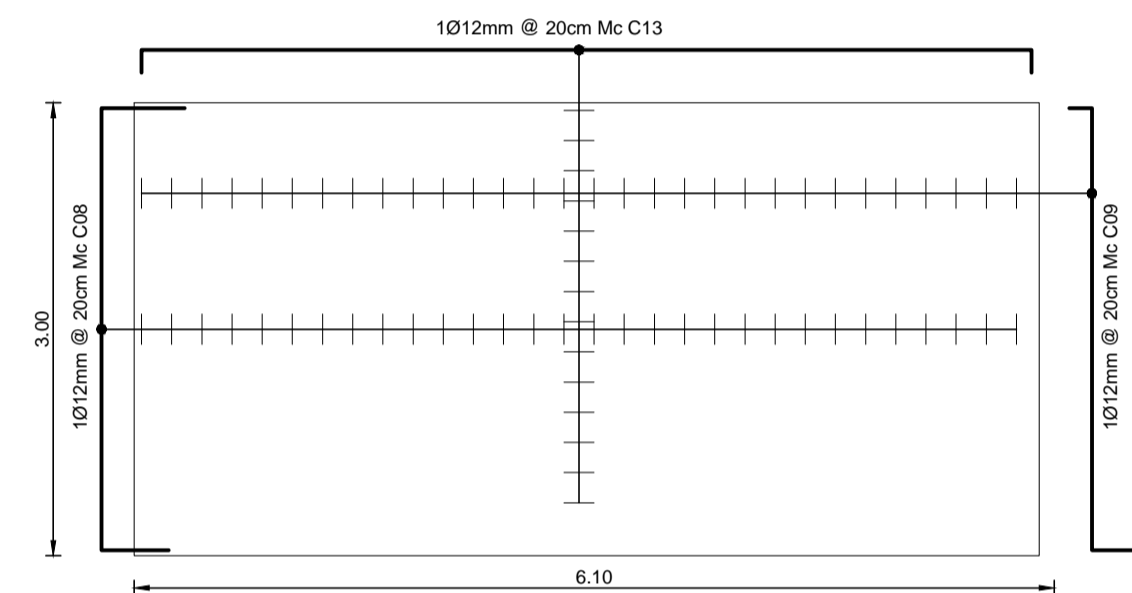
MURO 1
ESC 1:50



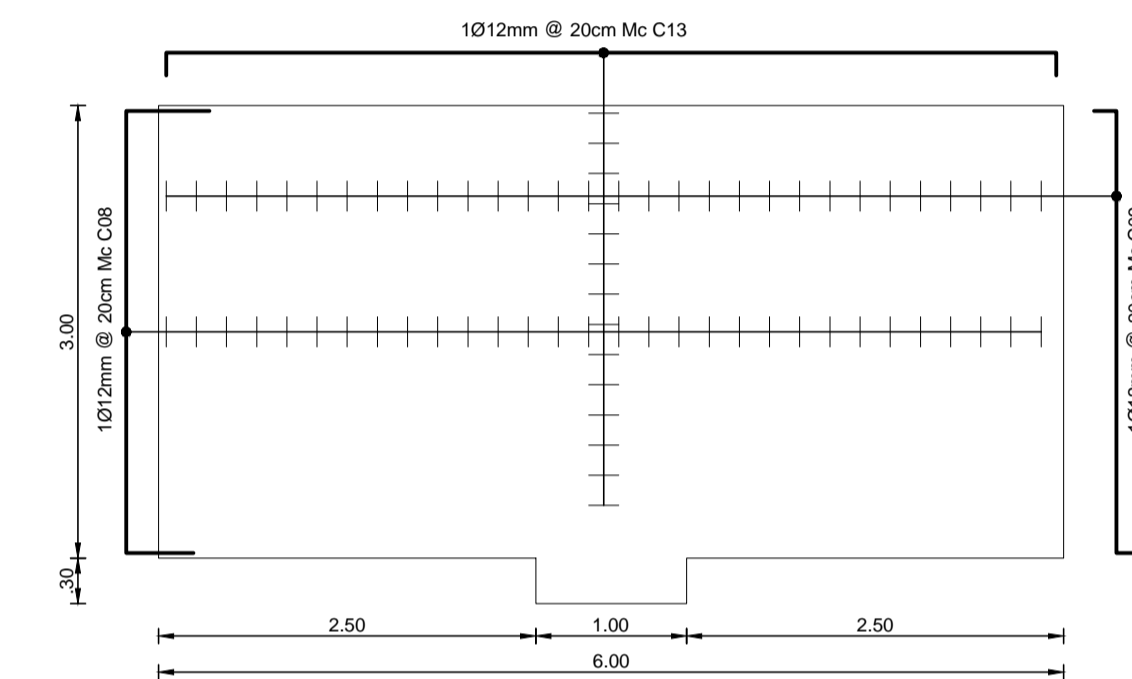
MURO 2
ESC 1:50



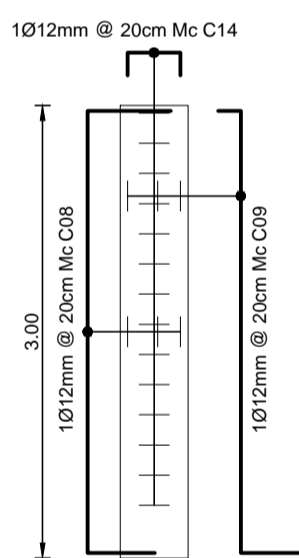
MURO 3
ESC 1:50



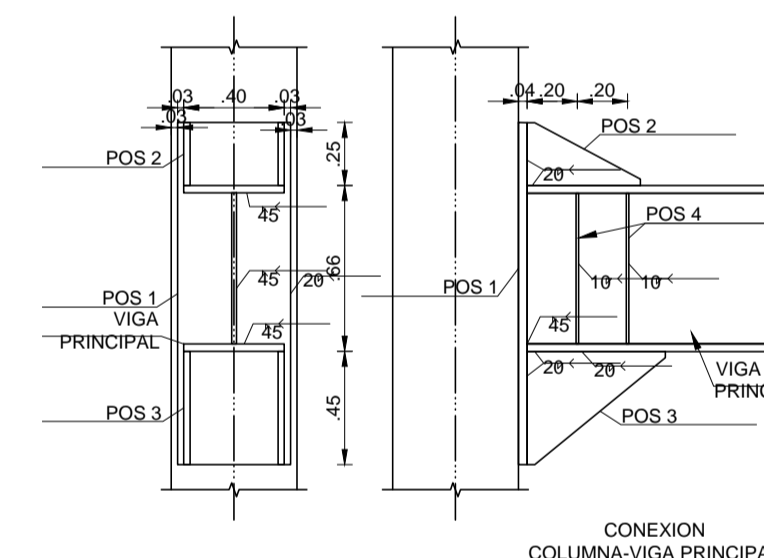
MURO 4
ESC 1:50



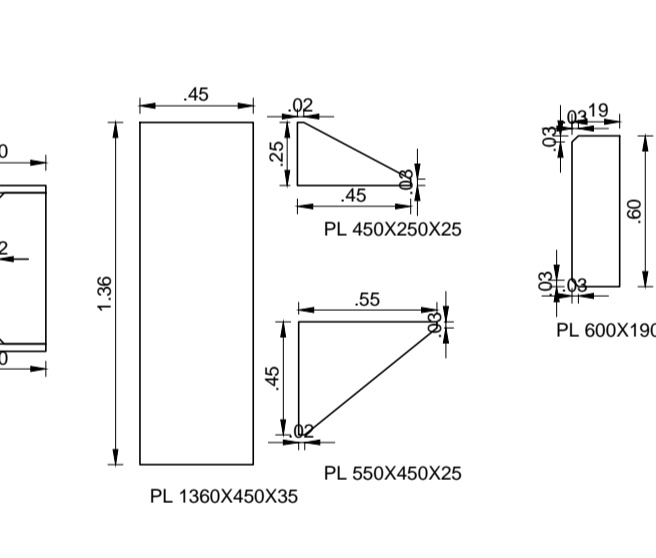
MURO 5
ESC 1:50



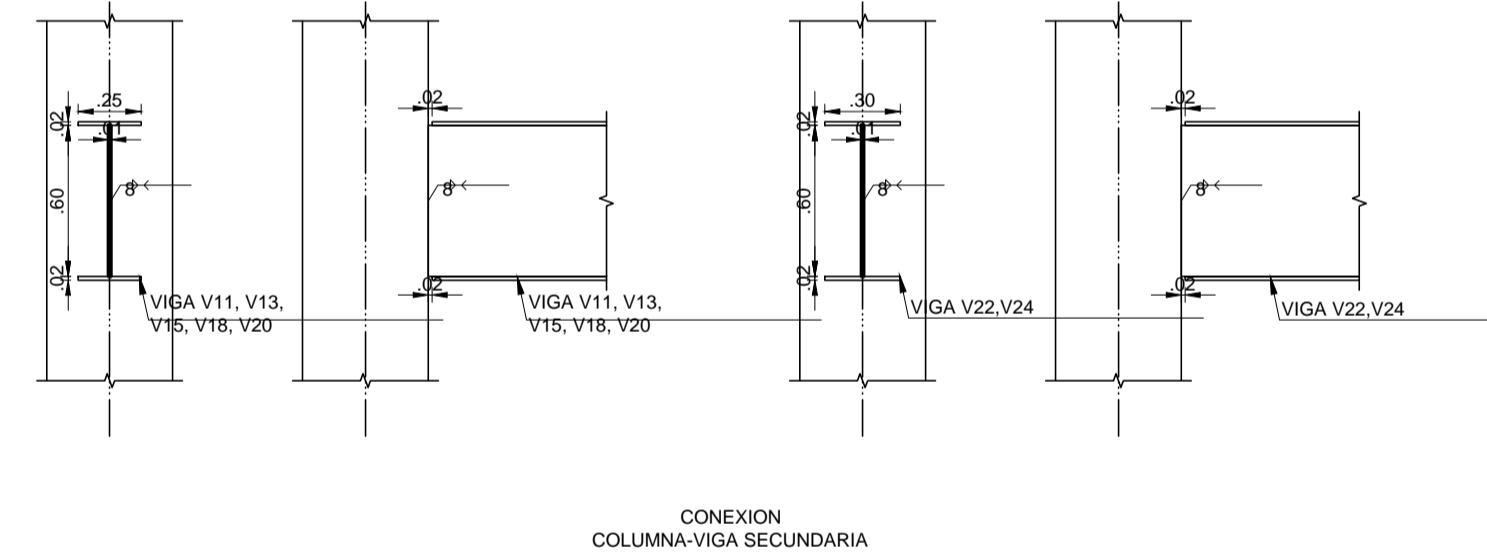
MURO 6
ESC 1:50



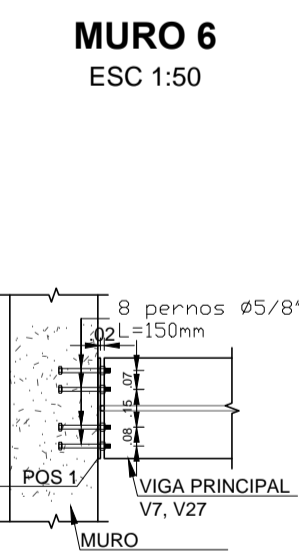
CONEXION COLUMNA-VIGA PRINCIPAL



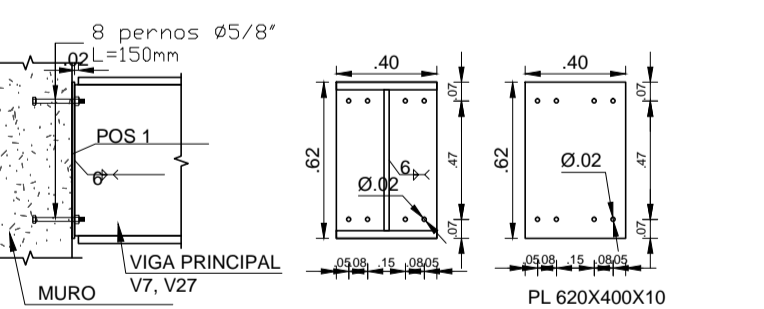
CONEXION COLUMNA-VIGA SECUNDARIA



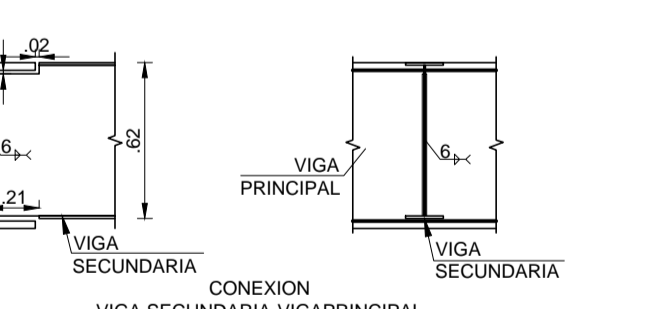
CONEXION MURO-VIGA SECUNDARIA



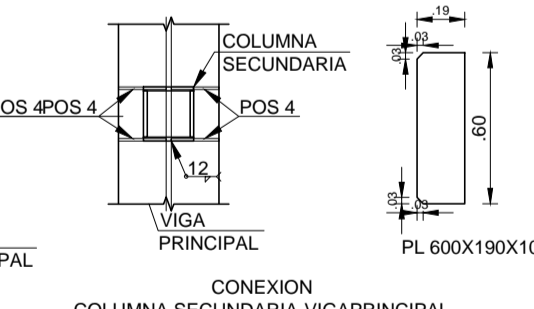
CONEXION VIGA PRINCIPAL



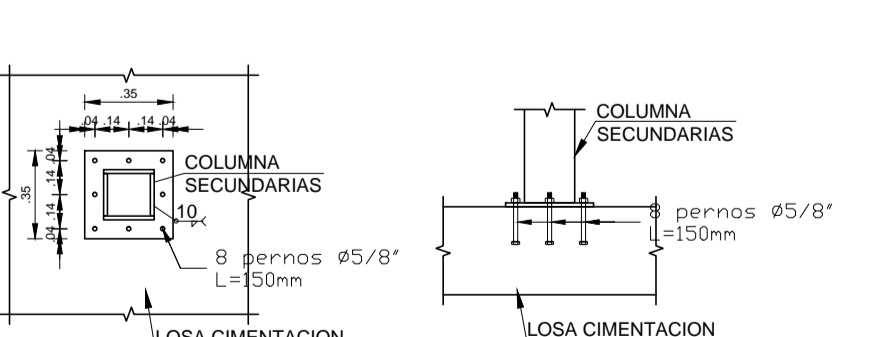
CONEXION VIGA SECUNDARIA



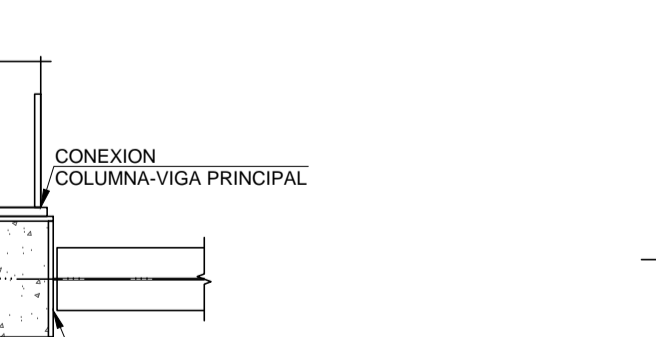
CONEXION VIGA SECUNDARIA



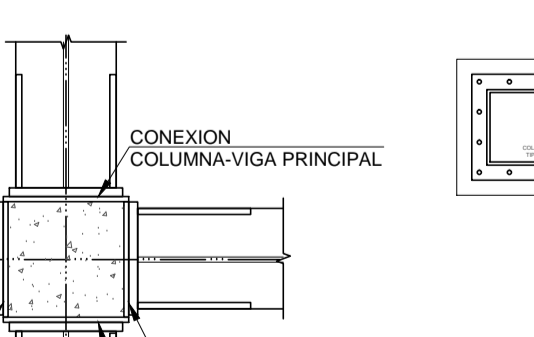
CONEXION COLUMNA-VIGA SECUNDARIA



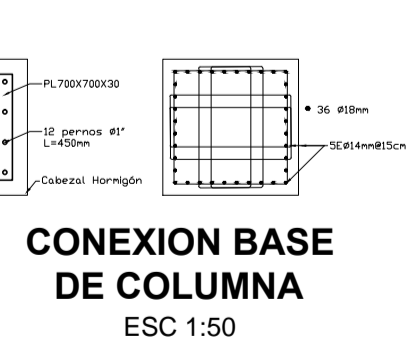
CONEXION COLUMNA-VIGA SECUNDARIA



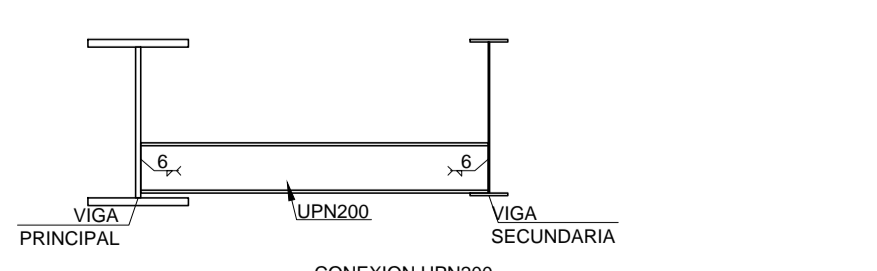
CONEXION COLUMNA-VIGA SECUNDARIA



CONEXION COLUMNA-VIGA SECUNDARIA



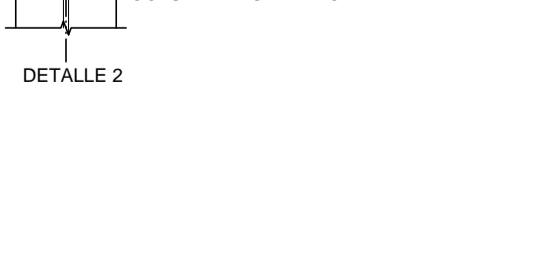
CONEXION BASE DE COLUMNA
ESC 1:50



CONEXION VIGA SECUNDARIA

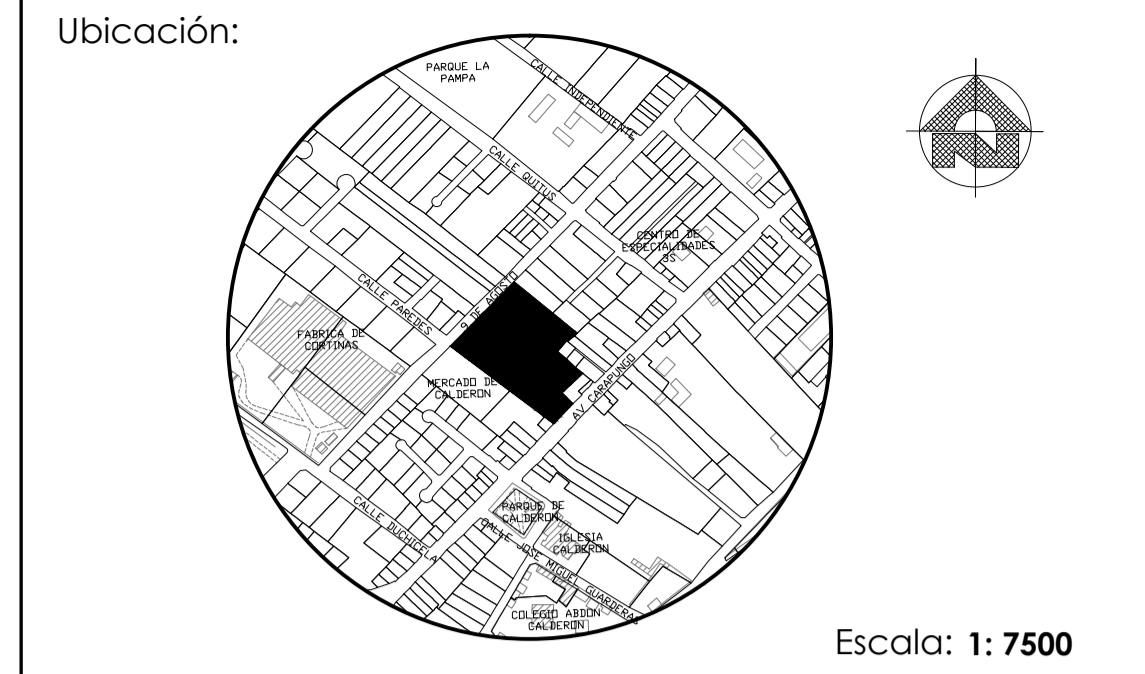


CONEXION COLUMNA-VIGA SECUNDARIA



CONEXION COLUMNA-VIGA SECUNDARIA

CONEXIONES
ESC 1:30



Ubicación:
Escala: 1: 7500
MUNICIPIO DEL DISTRITO METROPOLITANO DE QUITO
ADMINISTRACIÓN ZONAL CALDERON



HENRY VALENCIA
Administrador Zonal Calderon

Aprobado por: **ING. PAOLA SILVA**
Administrador del contrato
Revisado por: **ARQ. WASHINGTON MARTINEZ**
Fiscalizador

Consultor: **ING MARCELO TRUJILLO**
Diseño: **ING. ANDRÉS LÓPEZ G.**
SENECYT Reg N 1004-02-241778

Proyecto:
ESTUDIOS Y DISEÑOS DEFINITIVOS DEL MERCADO DE CALDERÓN, ADMINISTRACIÓN ZONAL CALDERÓN, DISTRITO METROPOLITANO, CANTÓN QUITO, PROVINCIA DE PICHINCHA.

Datos Generales del Predio:

Clave Catastral:	13217 02 020	IRM N:	640965
Zona Administrativa:	CALDERÓN	N del Predio:	210907
Area de terreno segun levantamiento:	9590.55 m2		
Cos PB:	80 %	Cos TOTAL:	240 %
Zonificación:	D4 (D303 - 80)		

Fecha: **17/01/2018**
Dibujantes: **DANIEL VELA A.**
JUAN FERNANDO RIVERA.
Coordinación: **ING WILLIAM BARRAGAN**
ARQ RODRIGO PAEZ
Contiene: **CONEXIONES CISTERNA**
Dimensiones prevalecen sobre escalas
Escala: **INDICADAS** Lámina: **E14/14**

Sellos Municipales:

PLANILLA DE HIERRO															
MC	Ø (mm)	tipo	N°	dimensiones (m)					longitud (m)						
				a	b	c	d	e	g	desarrollo	total				
MENSULA															
M01	22	L	36	1.50	1	x	0.65			2.15	77.40				
M02	12	L	36	1.10	1	x	0.40			1.50	54.00				
M03	10	O	28	2	x	0.75	2	x	0.70	3.10	86.80				
M04	10	O	14	2	x	0.75	2	x	0.55	2	x	0.10	2.80	39.20	
M05	10	O	14	2	x	0.75	2	x	0.35	2	x	0.10	2.40	33.60	
M06	12	Z	36	0.90	1	x	0.55	1	x	0.55	2.00	72.00			
M07	12	L	36	1.80	1	x	0.20			2.00	72.00				
M08	12	I	36	1.80	2	x	0.75	2	x	0.70	2	x	0.10	4.90	176.40
M09	10	O	42	2	x	0.75	2	x	0.55	2	x	0.10	2.80	117.60	
LOSA RAMPA TIPO 3															
L01	12	C	102	5.70	2	x	0.15			6.00	612.00				
L02	12	L	60	VAR.	1	x	0.15			7.50	450.00				
L03	12	L	56	2.85	1	x	0.15			3.00	168.00				
CISTERNA															
C01	12	C	94	5.90	2	x	0.15			6.20	582.80				
C02	12	C	60	6.00	2	x	0.15			6.30	378.00				
C03	12	C	11	4.30	2	x	0.15			4.60	50.60				
C04	12	C	16	1.05	2	x	0.15			1.35	21.60				
C05	12	C	8	2.00	2	x	0.15			2.30	18.40				
C06	12	C	9	0.35	2	x	0.15			0.65	5.85				
C07	12	C	10	3.05	2	x	0.15			3.35	33.50				
C08	12	C1	53	2.90	1	x	0.60	1	x	0.50	4.00	212.00			
C09	12	Z	53	2.90	1	x	0.15	1	x	0.45	3.50	185.50			
C10	12	C	28	6.00	2	x	0.15			6.30	176.40				
C11	12	C	28	4.30	2	x	0.15			4.60	128.80				
C12	12	C	28	4.55	2	x	0.15			4.85	135.80				
C13	12	C	84	5.90	2	x	0.15			6.20	520.80				
C14	12	C	28	0.35	2	x	0.15			0.65	18.20				
RESUMEN DE MATERIALES															
ELEMENTOS	ACERO							Hormigón (m³)							
	8mm	10mm	12mm	14mm	16mm	18mm	20mm		22mm	25mm					
MENSULA	0	277.2	374.4	0	0	0	0	77.4	0	2.97					
LOSA RAMPA TIPO 3	0	0	1230	0	0	0	0	0	0	8.74					
CISTERNA	0	0	2468.25	0	0	0	0	0	0	27.90					
TOTAL (m)	0	277.2	4072.65	0	0	0	0	77.4	0	39.61					
TOTAL (kg)	0	171.032	3616.51	0	0	0	0	230.9616	0						
TOTAL								kg 4018.5072							