

PLANILLA DE HIERROS

Mc	TIPO	Ø mm	No.	DIMENSIONES				Long. Desar. (m)	Long. Total	Peso Kg.	Observ.
				a	b	c	g				
MARCAS 300 400											
Marca 300											
301	C	12	6	1.05	0.20	0.00	0.00	1.45	8.7	7.7	-
302	C	12	6	4.80	0.20	0.00	0.00	5.20	31.2	27.7	-
303	C	12	6	6.10	0.20	0.00	0.00	6.50	39	34.6	-
304	C	12	12	3.15	0.20	0.00	0.00	3.55	42.6	37.8	-
305	C	12	12	2.30	0.20	0.00	0.00	2.70	32.4	28.8	-
306	C	12	30	1.80	0.20	0.00	0.00	2.20	66	58.6	-
307	L	12	12	2.80	0.20	0.00	0.00	3	36	32.0	-
308	L	12	12	11.80	0.20	0.00	0.00	12	144	127.9	-
309	C	12	6	5.35	0.20	0.00	0.00	5.75	34.5	30.6	-
310	C	12	6	3.25	0.20	0.00	0.00	3.65	21.9	19.5	-
351	O	10	388	0.15	0.35	0.00	0.08	1.16	450.08	277.7	-
352	O	10	88	0.19	0.34	0.00	0.08	1.22	107.36	66.2	-
MARCA 400											
401	C	10	8	2.06	0.17	0.00	0.00	2.40	19.2	11.9	-
402	C	10	5	1.31	0.17	0.00	0.00	1.65	8.25	5.1	-
403	C	10	56	1.66	0.17	0.00	0.00	2	112	69.1	-
404	C	10	24	1.16	0.17	0.00	0.00	1.50	36	22.2	-
405	C	10	16	3.66	0.17	0.00	0.00	4	64	39.5	-
406	C	10	3	5.60	0.15	0.00	0.00	5.90	17.7	10.9	-
407	C	10	3	4.80	0.15	0.00	0.00	5.10	15.3	9.4	-
408	C	10	6	9.10	0.15	0.00	0.00	9.40	56.4	34.8	-
409	C	10	12	5.30	0.15	0.00	0.00	5.60	67.2	41.5	-
410	L	10	8	2.50	0.15	0.00	0.00	2.65	21.2	13.1	-
411	C	10	8	2.05	0.15	0.00	0.00	2.35	18.8	11.6	-
412	C	10	2	6.25	0.15	0.00	0.00	6.55	13.1	8.1	-
413	L	10	8	11.85	0.15	0.00	0.00	12	96	59.2	-

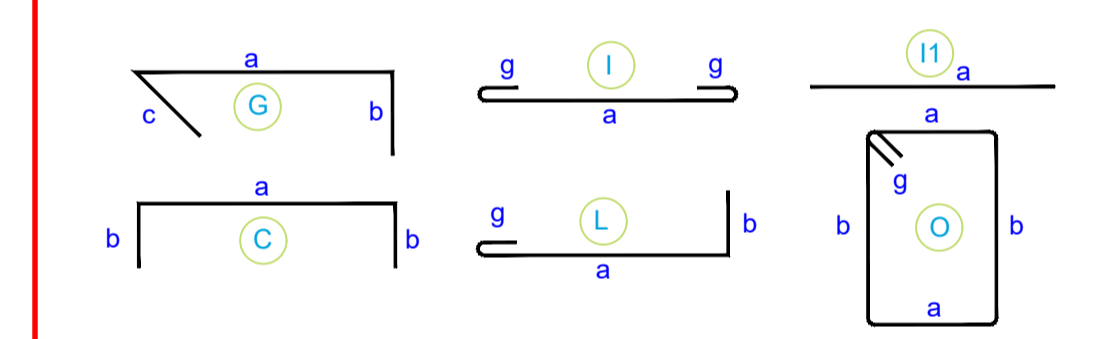
RESUMEN DE MATERIALES

Ø (mm)	8	10	12	14	16	18	20	22	25	28	32
W (Kg/m)	0.395	0.617	0.888	1.208	1.578	1.998	2.466	2.984	3.853	4.834	6.313
L (m)	0	1103	456	0	0	0	0	0	0	0	0
PESO (Kg)	0	680	405	0	0	0	0	0	0	0	0

Wtot (Kg) = 1086

LOSA NERVADA (m3) = 7.60
 VIGAS (m3) = 5.10
 CASETONES (40x40x15) = 270
 CASETONES (40x20x15) = 82

TIPOS DE HIERROS:



ESPECIFICACIONES GENERALES

HORMIGÓN $f'c =$ 210 Kg/cm² ACERO EN PERFILES $F_y =$ 2530 Kg/cm² A36
 ACERO EN VARILLAS $f_y =$ 4200 Kg/cm² ELECTRODO DE SOLDADURA= N.A.
 MALLA ELECTROSOLDADA $f_y =$ 5000 Kg/cm² PERNOS PARA UNIONES= N.A.
 MADERA GRUPO (JUNAC)= N.A. PERNOS DE ANCLAJE= 2530 Kg/cm² A36

TODOS LOS TRABAJOS EN HORMIGÓN SE REALIZARAN DE CONFORMIDAD CON LOS REQUERIMIENTOS DEL CODIGO ACI 301 ACTUALIZADO (SPECIFICATIONS FOR STRUCTURAL CONCRETE)
 LOS TRABAJOS EN ACERO SE REALIZARAN DE CONFORMIDAD CON LOS REQUERIMIENTOS DEL CODIGO AISC 303 ACTUALIZADO (CODE OF STANDARD PRACTICE FOR STEEL BUILDINGS)

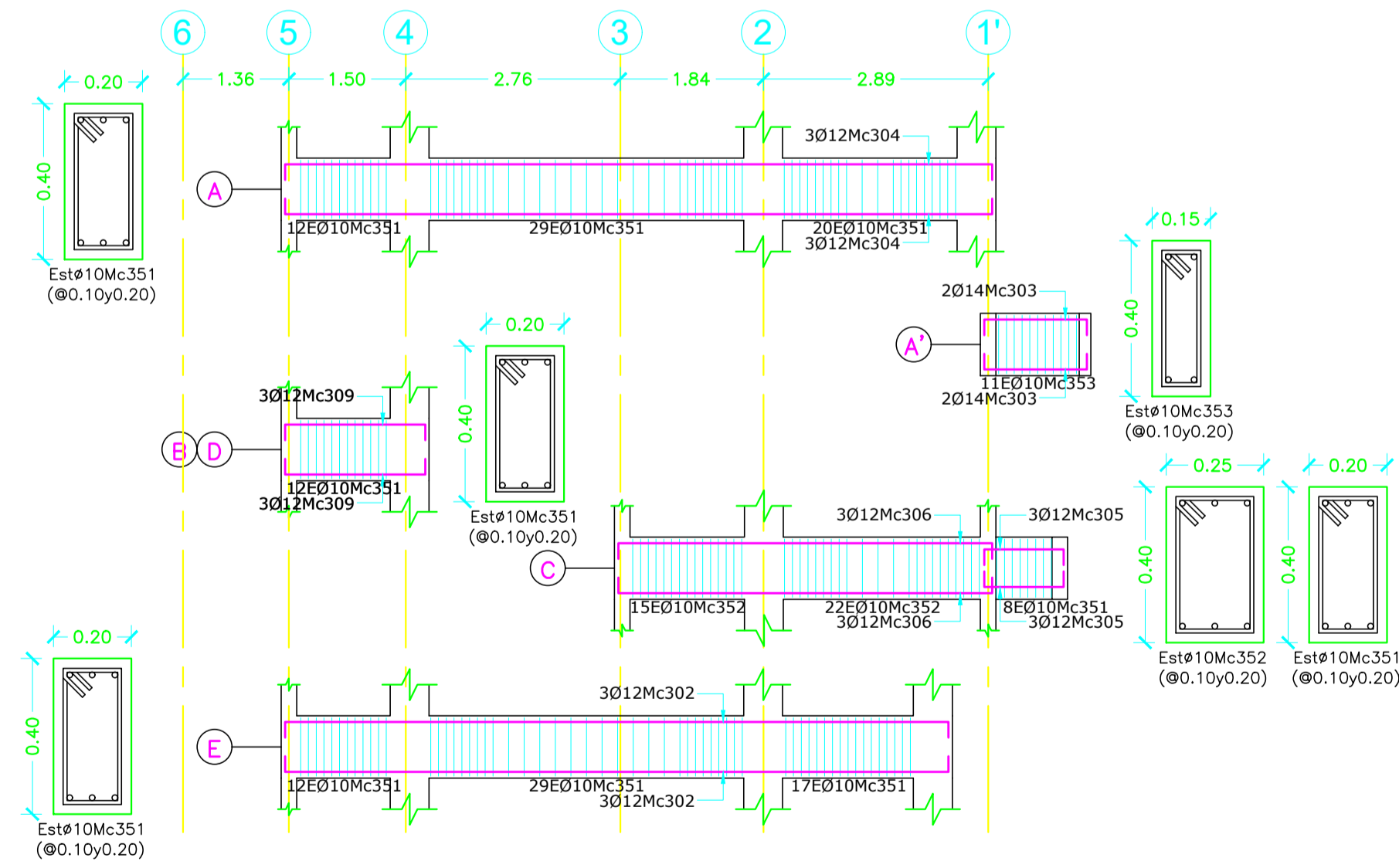
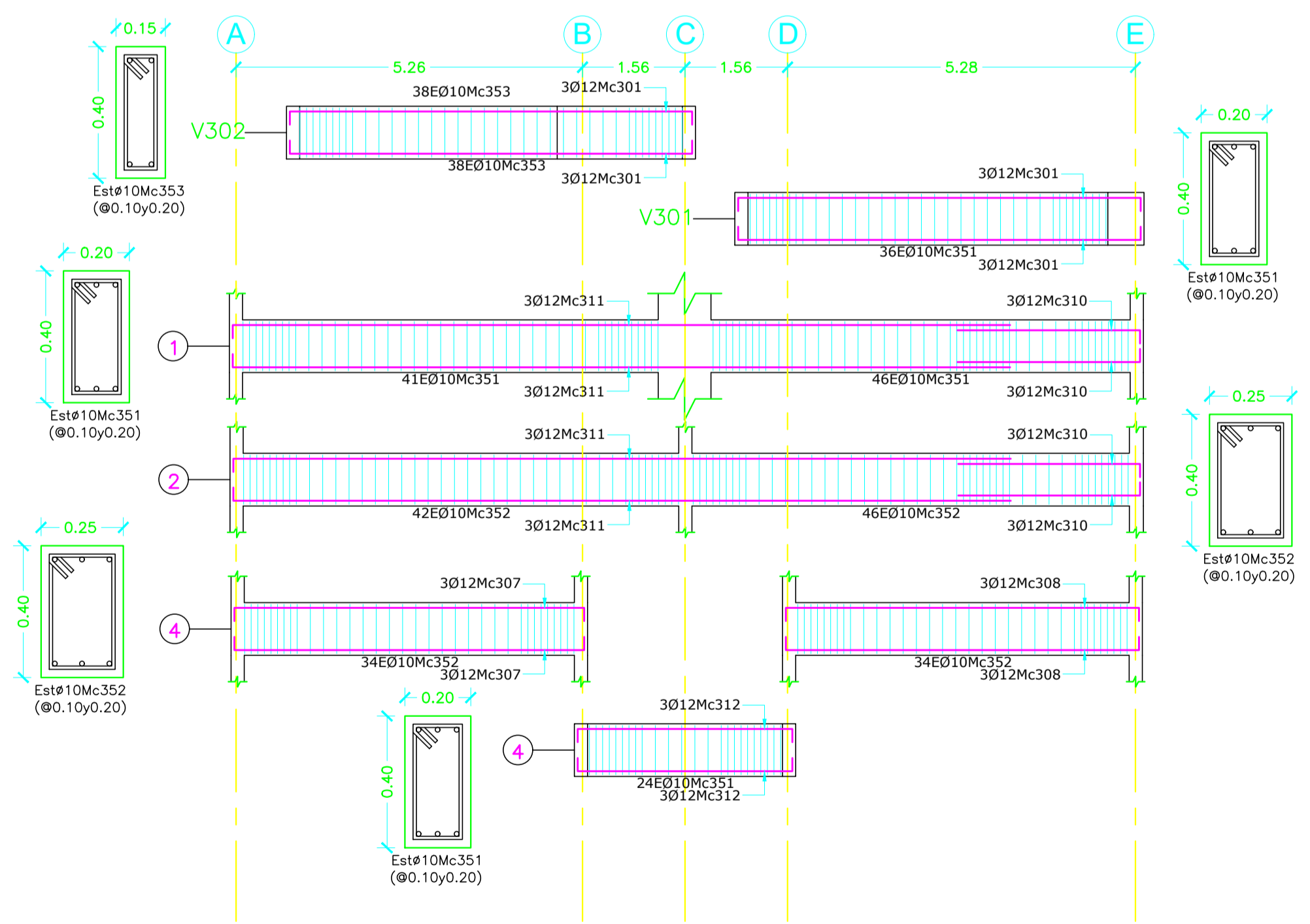
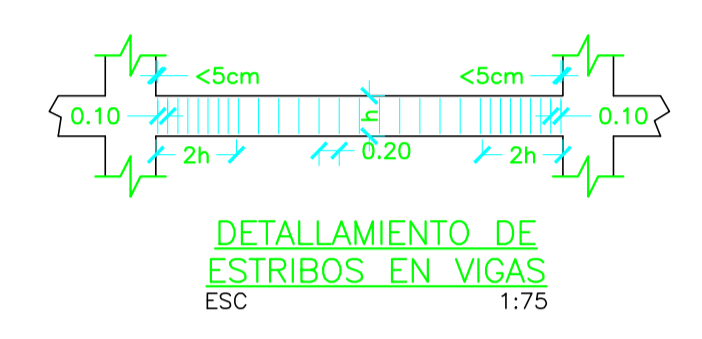
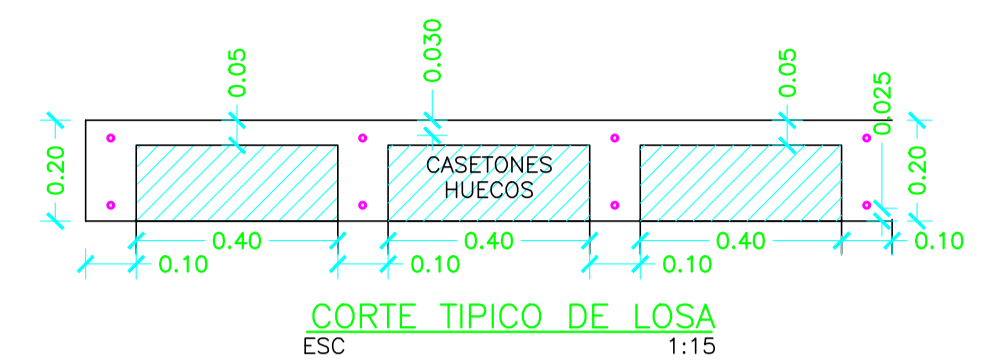
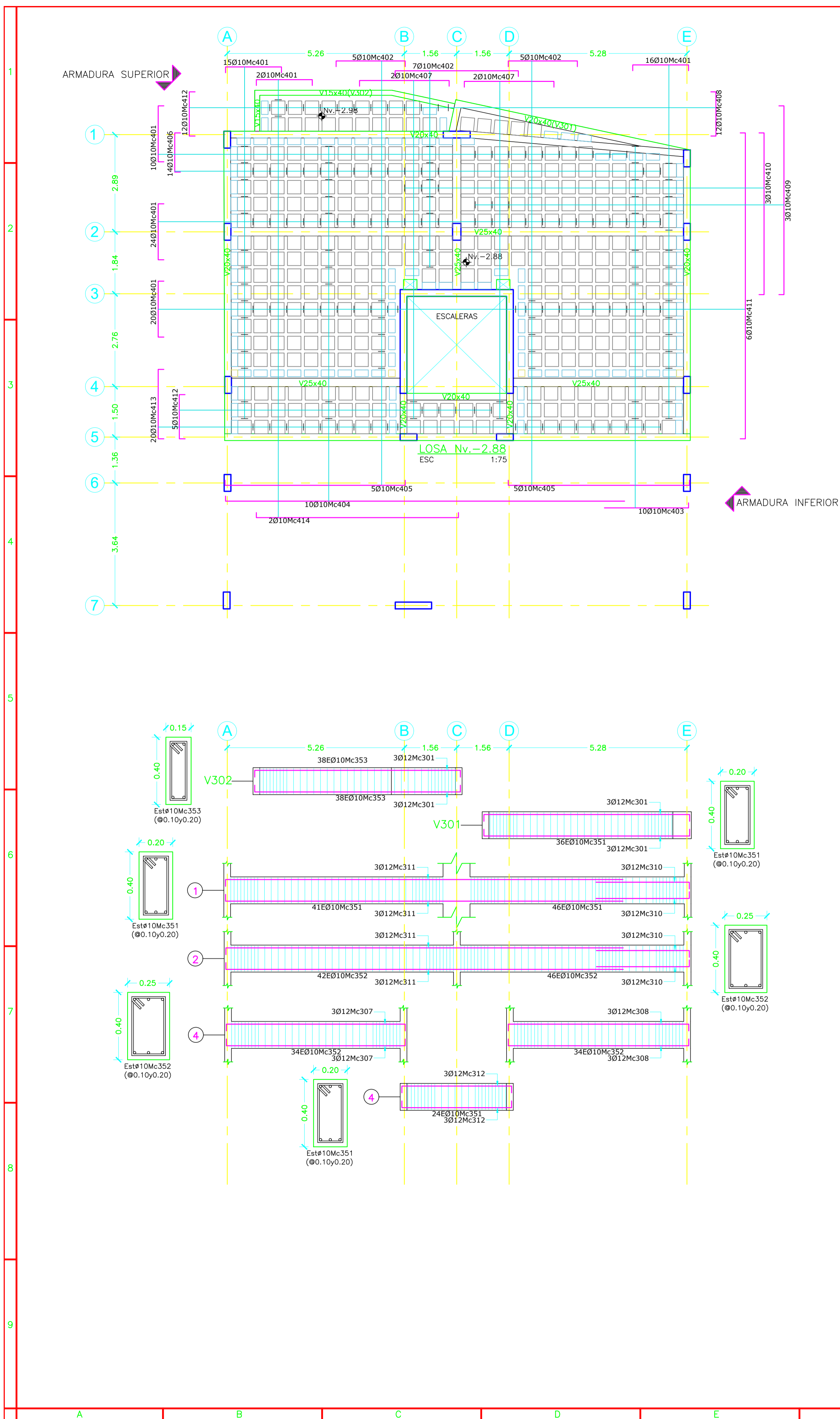
ITCHIMBIA

CONTIENE:	11	ABR	2023
LOSA Y VIGAS Nv.-5.94	REVISION	E	
	LAMINA	E.2	

UBICACION : QUITO
 PROPIETARIO :
 DISEÑO ESTRUCTURAL : ING. JOSE LUIS MESIAS
 COLABORACION :
 DIBUJO : J.L.M.
 ESCALAS : INDICADAS (1:75)

SENECYT 1027-06-706426/EMOP. 4923
 Firmado digitalmente por
 JOSE LUIS MESIAS PAZMINO
 Fecha: 2023.04.11 09:50:38
 89397
 PROPIETARIO : JOSE LUIS MESIAS (01-17-6767)

SELLOS MUNICIPALES



PLANILLA DE HIERROS

Mc	TIPO	Ø mm	No.	DIMENSIONES				Long. Desar. (m)	Long. Total	Peso Kg.	Observ.
				a	b	c	g				
MARCAS 300 400											
Marca 300											
301	C	12	12	6.10	0.20	0.00	0.00	6.50	78	69.3	-
302	C	12	6	8.50	0.20	0.00	0.00	8.90	53.4	47.4	-
303	C	14	4	1.35	0.20	0.00	0.00	1.75	7	8.5	-
304	C	12	6	9.10	0.20	0.00	0.00	9.50	57	50.6	-
305	C	12	6	1.05	0.20	0.00	0.00	1.45	8.7	7.7	-
306	C	12	6	4.80	0.20	0.00	0.00	5.20	31.2	27.7	-
307	C	12	6	5.30	0.20	0.00	0.00	5.70	34.2	30.4	-
308	C	12	6	5.35	0.20	0.00	0.00	5.75	34.5	30.6	-
309	C	12	12	1.80	0.20	0.00	0.00	2.20	26.4	23.4	-
310	L	12	12	2.80	0.20	0.00	0.00	3	36	32.0	-
311	L	12	12	11.80	0.20	0.00	0.00	12	144	127.9	-
312	C	12	6	3.25	0.20	0.00	0.00	3.65	21.9	19.5	-
351	O	10	298	0.15	0.35	0.00	0.08	1.16	345.68	213.3	-
352	O	10	193	0.19	0.34	0.00	0.08	1.22	235.46	145.3	-
353	O	10	87	0.10	0.35	0.00	0.08	1.06	92.22	56.9	-

MARCAS 400											
401	C	10	87	1.66	0.17	0.00	0.00	2	174	107.4	-
402	C	10	17	3.66	0.17	0.00	0.00	4	68	42.0	-
403	L	10	10	2.50	0.15	0.00	0.00	2.65	26.5	16.4	-
404	L	10	10	11.85	0.15	0.00	0.00	12	120	74.0	-
405	C	10	10	5.35	0.15	0.00	0.00	5.65	56.5	34.9	-
406	C	10	14	1.16	0.17	0.00	0.00	1.50	21	13.0	-
407	C	10	4	2.66	0.17	0.00	0.00	3	12	7.4	-
408	C	10	12	1.30	0.15	0.00	0.00	1.60	19.2	11.9	-
409	C	10	3	5.60	0.15	0.00	0.00	5.90	17.7	10.9	-
410	C	10	3	4.80	0.15	0.00	0.00	5.10	15.3	9.4	-
411	C	10	6	9.10	0.15	0.00	0.00	9.40	56.4	34.8	-
412	C	10	17	1.31	0.17	0.00	0.00	1.65	28.05	17.3	-
413	C	10	20	2.06	0.17	0.00	0.00	2.40	48	29.6	-
414	C	10	2	6.00	0.15	0.00	0.00	6.30	12.6	7.8	-

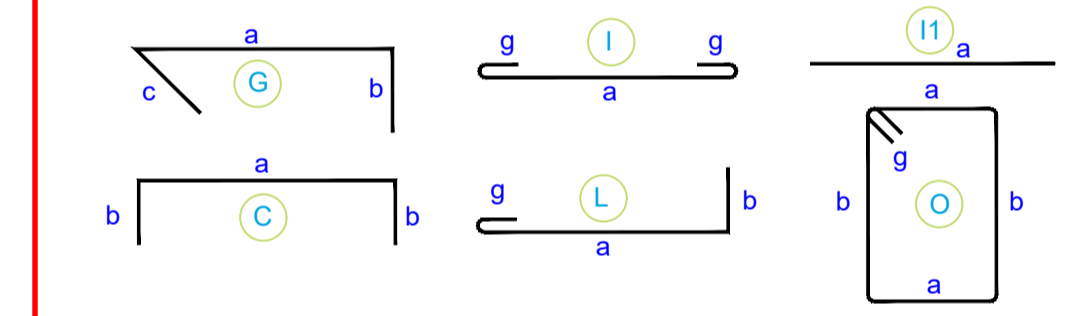
RESUMEN DE MATERIALES

Ø (mm)	8	10	12	14	16	18	20	22	25	28	32
W (Kg/m)	0.395	0.617	0.888	1.208	1.578	1.998	2.466	2.984	3.853	4.834	6.313
L (m)	0	1349	525	7	0	0	0	0	0	0	0
PESO (Kg)	0	832	466	8	0	0	0	0	0	0	0

Wtot (Kg) = 1307

LOSA NERVADA (m3) = 11.00
 VIGAS (m3) = 6.00
 CASETONES (40x40x15) = 379
 CASETONES (40x20x15) = 101

TIPOS DE HIERROS:



ESPECIFICACIONES GENERALES

HORMIGÓN f'c = 210 Kg/cm² ACERO EN PERFILES Fy = 2530 Kg/cm² A36
 ACERO EN VARILLAS fy = 4200 Kg/cm² ELECTRODO DE SOLDADURA = N.A.
 MALLA ELECTROSOLDADA fy = 5000 Kg/cm² PERNOS PARA UNIONES = N.A.
 MADERA GRUPO (JUNAC) = N.A. PERNOS DE ANCLAJE = 2530 Kg/cm² A36

TODOS LOS TRABAJOS EN HORMIGÓN SE REALIZARÁN DE CONFORMIDAD CON LOS REQUERIMIENTOS DEL CÓDIGO ACI 301 ACTUALIZADO (SPECIFICATIONS FOR STRUCTURAL CONCRETE)
 LOS TRABAJOS EN ACERO SE REALIZARÁN DE CONFORMIDAD CON LOS REQUERIMIENTOS DEL CÓDIGO AISC 303 ACTUALIZADO (CODE OF STANDARD PRACTICE FOR STEEL BUILDINGS)

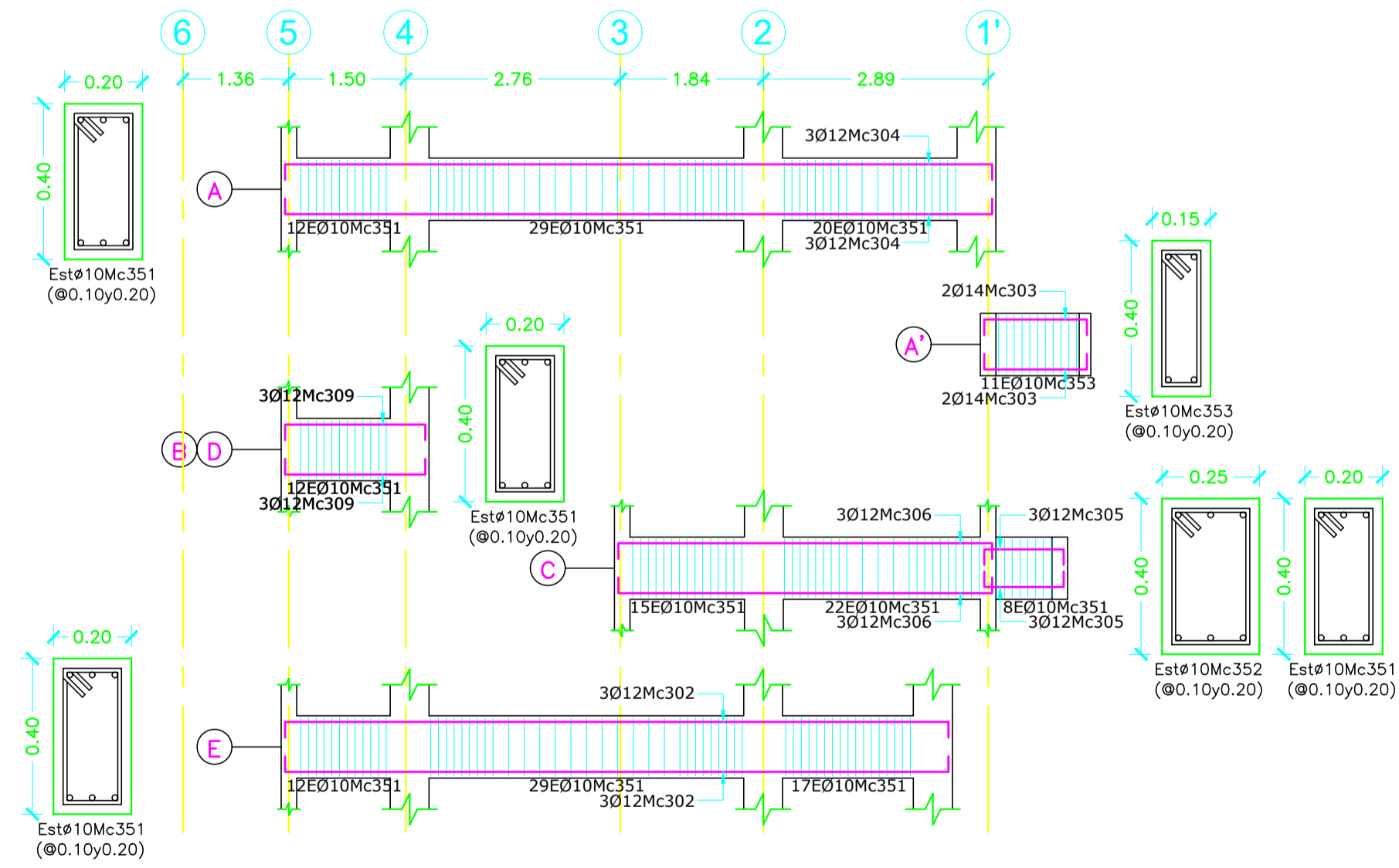
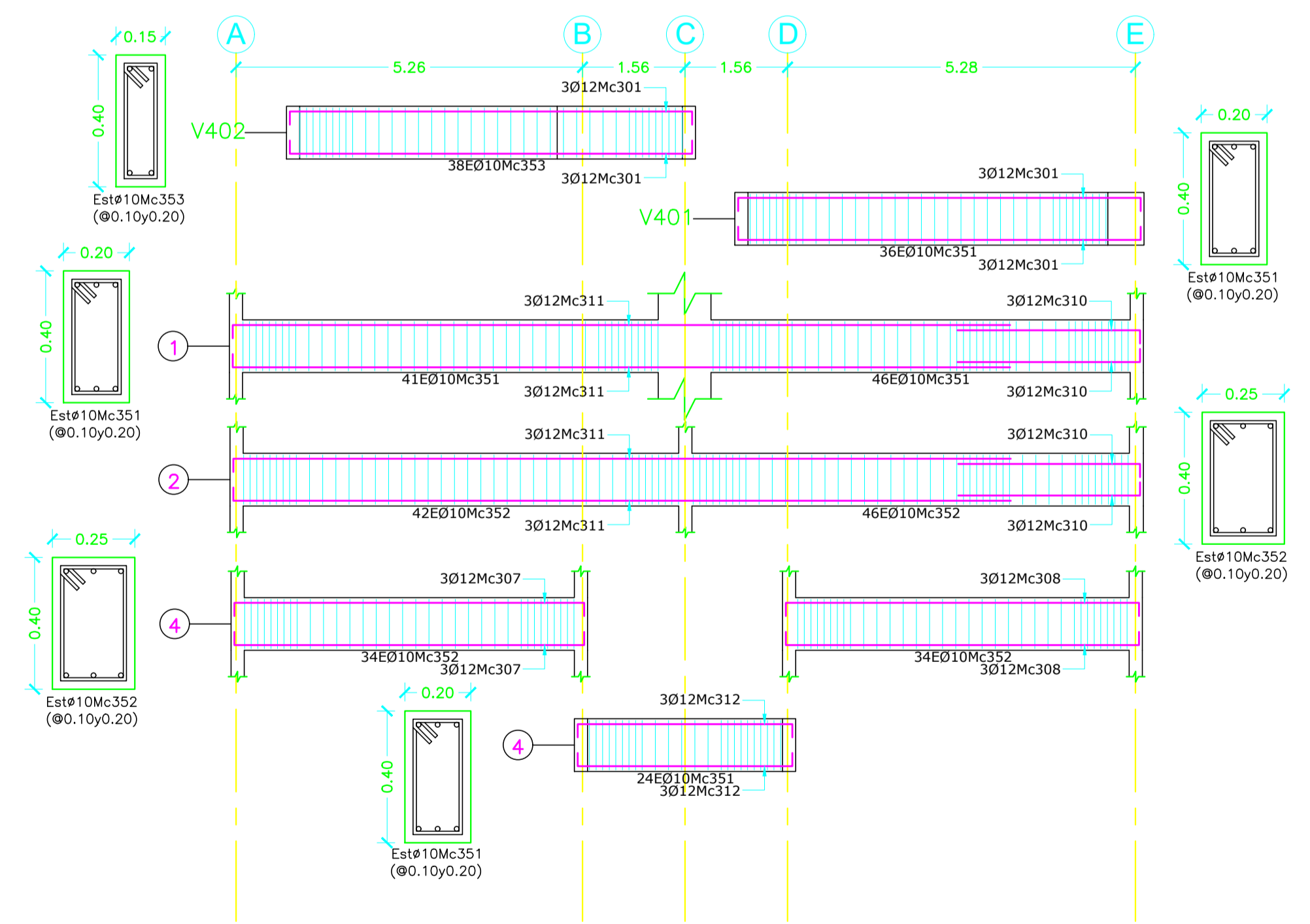
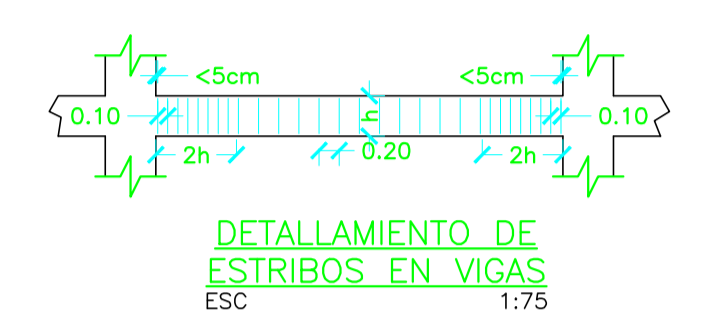
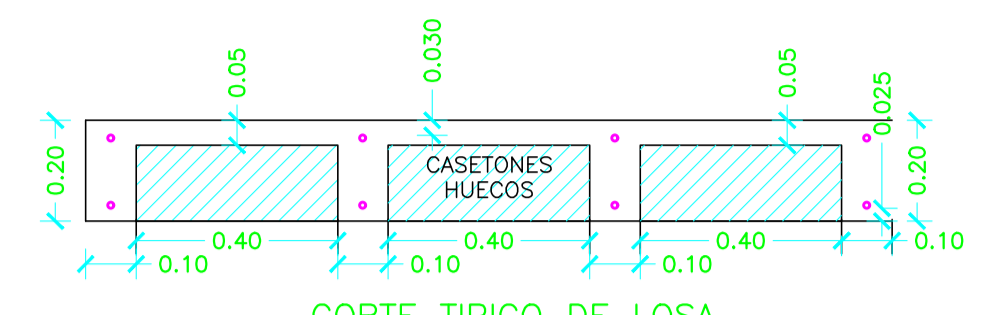
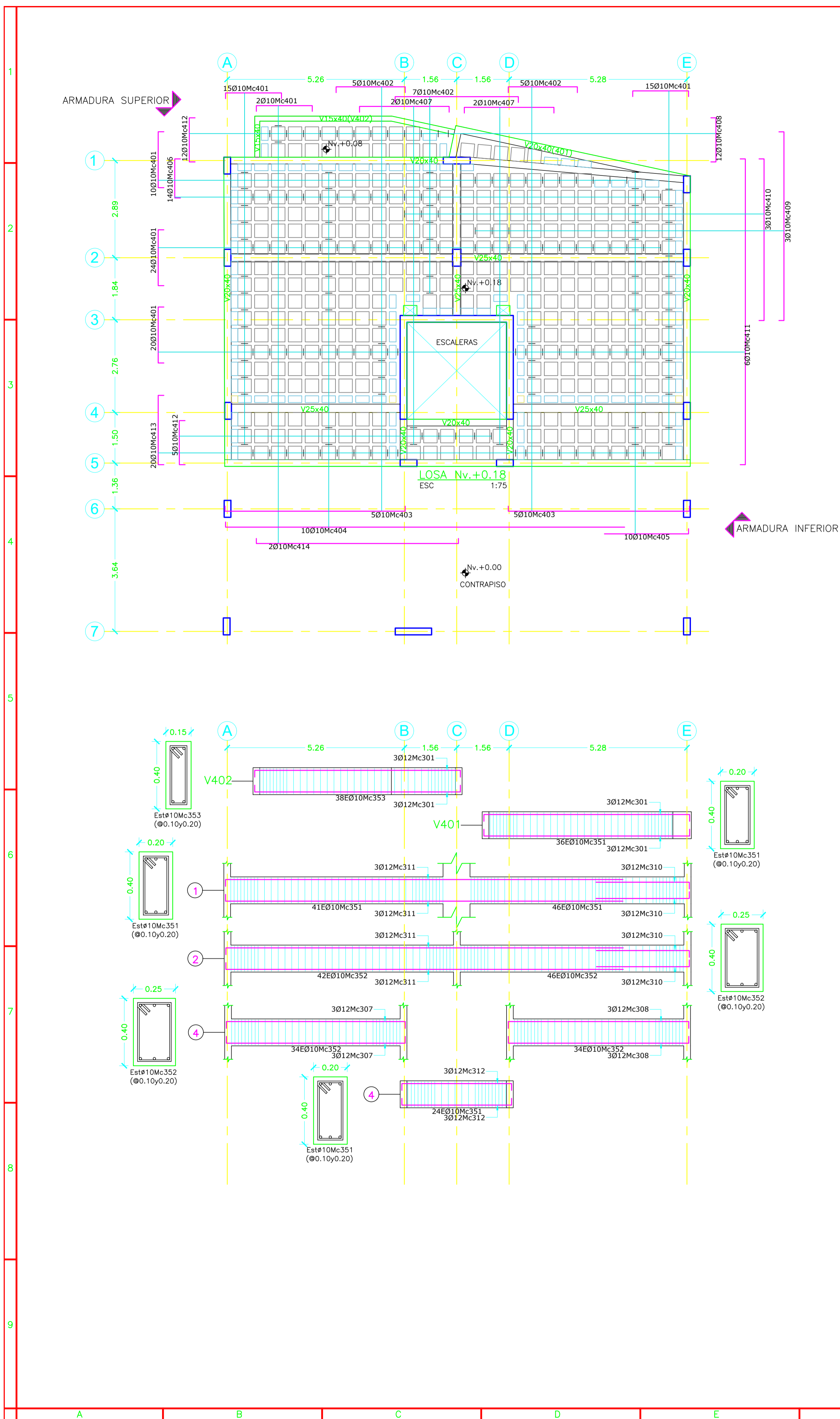
ITCHIMBIA

CONTIENE:	LOSA Y VIGAS Nv. -2.88	11	ABR	2023
		REVISION		E
		LAMINA		E.3

UBICACION : QUITO
 PROPIETARIO :
 DISEÑO ESTRUCTURAL : ING. JOSE LUIS MESIAS
 COLABORACION :
 DIBUJO : J.L.M.
 ESCALAS : INDICADAS (1:75)

SENECYT 1027-06-706426/EMOP 4923
JOSE LUIS MESIAS PAZMINO
 Firmado digitalmente por JOSE LUIS MESIAS PAZMINO
 Fecha: 2023.04.11 09:51:12 -0500
 PROPIETARIO: JOSE LUIS MESIAS (01-17-6767)

SELLOS MUNICIPALES



PLANILLA DE HIERROS

Mc	TIPO	Ø mm	No.	DIMENSIONES				Long. Desar. (m)	Long. Total	Peso Kg.	Observ.
				a	b	c	g				
MARCAS 300 400											
301	C	12	12	6.10	0.20	0.00	0.00	6.50	78	69.3	-
302	C	12	6	8.50	0.20	0.00	0.00	8.90	53.4	47.4	-
303	C	14	4	1.35	0.20	0.00	0.00	1.75	7	8.5	-
304	C	12	6	9.10	0.20	0.00	0.00	9.50	57	50.6	-
305	C	12	6	1.05	0.20	0.00	0.00	1.45	8.7	7.7	-
306	C	12	6	4.80	0.20	0.00	0.00	5.20	31.2	27.7	-
307	C	12	6	5.30	0.20	0.00	0.00	5.70	34.2	30.4	-
308	C	12	6	5.35	0.20	0.00	0.00	5.75	34.5	30.6	-
309	C	12	12	1.80	0.20	0.00	0.00	2.20	26.4	23.4	-
310	L	12	12	2.80	0.20	0.00	0.00	3	36	32.0	-
311	L	12	12	11.80	0.20	0.00	0.00	12	144	127.9	-
312	C	12	6	3.25	0.20	0.00	0.00	3.65	21.9	19.5	-
351	O	10	335	0.15	0.35	0.00	0.08	1.16	388.6	239.8	-
352	O	10	156	0.19	0.34	0.00	0.08	1.22	190.32	117.4	-
353	O	10	49	0.10	0.35	0.00	0.08	1.06	51.94	32.1	-
MARCA #00											
401	C	10	86	1.66	0.17	0.00	0.00	2	172	106.1	-
402	C	10	17	3.66	0.17	0.00	0.00	4	68	42.0	-
403	C	10	10	5.35	0.15	0.00	0.00	5.65	56.5	34.9	-
404	L	10	10	11.85	0.15	0.00	0.00	12	120	74.0	-
405	L	10	10	2.50	0.15	0.00	0.00	2.65	26.5	16.4	-
406	C	10	14	1.16	0.17	0.00	0.00	1.50	21	13.0	-
407	C	10	4	2.66	0.17	0.00	0.00	3	12	7.4	-
408	C	10	12	1.30	0.15	0.00	0.00	1.60	19.2	11.9	-
409	C	10	3	5.60	0.15	0.00	0.00	5.90	17.7	10.9	-
410	C	10	3	4.80	0.15	0.00	0.00	5.10	15.3	9.4	-
411	C	10	6	9.10	0.15	0.00	0.00	9.40	56.4	34.8	-
412	C	10	17	1.31	0.17	0.00	0.00	1.65	28.05	17.3	-
413	C	10	20	2.06	0.17	0.00	0.00	2.40	48	29.6	-
414	C	10	2	6.00	0.15	0.00	0.00	6.30	12.6	7.8	-

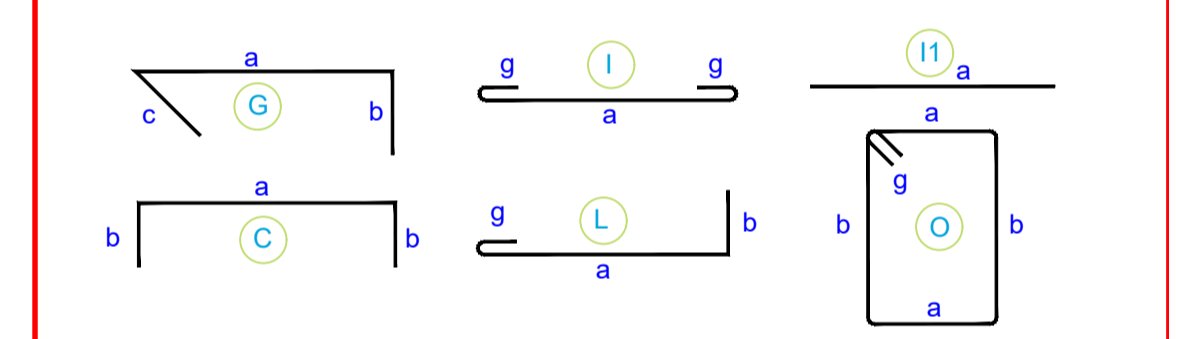
RESUMEN DE MATERIALES

Ø (mm)	8	10	12	14	16	18	20	22	25	28	32
W (Kg/m)	0.395	0.617	0.888	1.208	1.578	1.998	2.466	2.984	3.553	4.184	6.313
L (m)	0	1304	525	7	0	0	0	0	0	0	0
PESO (Kg)	0	805	466	8	0	0	0	0	0	0	0

Wtot (Kg) = 1280

LOSA NERVADA (m3) = 11.00
 VIGAS (m3) = 6.00
 CASETONES (40x40x15) = 379
 CASETONES (40x20x15) = 101

TIPOS DE HIERROS:



ESPECIFICACIONES GENERALES

HORMIGÓN f_c = 210 Kg/cm² ACERO EN PERFILES F_y = 2530 Kg/cm² A36
 ACERO EN VARILLAS f_y = 4200 Kg/cm² ELECTRODO DE SOLDADURA = N.A.
 MALLA ELECTROSOLDADA f_y = 5000 Kg/cm² PERNOS PARA UNIONES = N.A.
 MADERA GRUPO (JUNAC) = N.A. PERNOS DE ANCLAJE = 2530 Kg/cm² A36

TODOS LOS TRABAJOS EN HORMIGÓN SE REALIZARÁN DE CONFORMIDAD CON LOS REQUERIMIENTOS DEL CÓDIGO ACI 301 ACTUALIZADO (SPECIFICATIONS FOR STRUCTURAL CONCRETE)
 LOS TRABAJOS EN ACERO SE REALIZARÁN DE CONFORMIDAD CON LOS REQUERIMIENTOS DEL CÓDIGO AISC 303 ACTUALIZADO (CODE OF STANDARD PRACTICE FOR STEEL BUILDINGS)

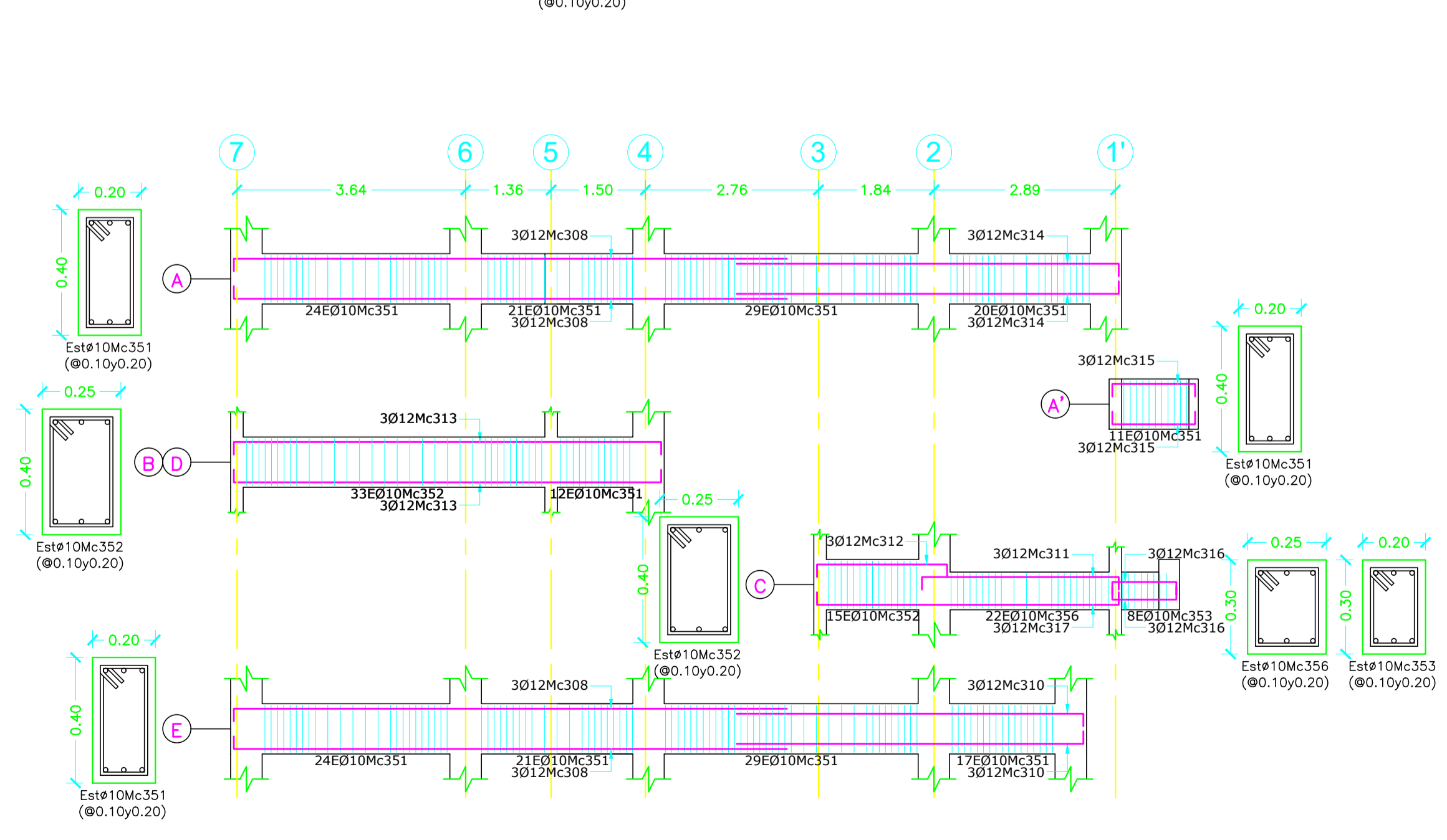
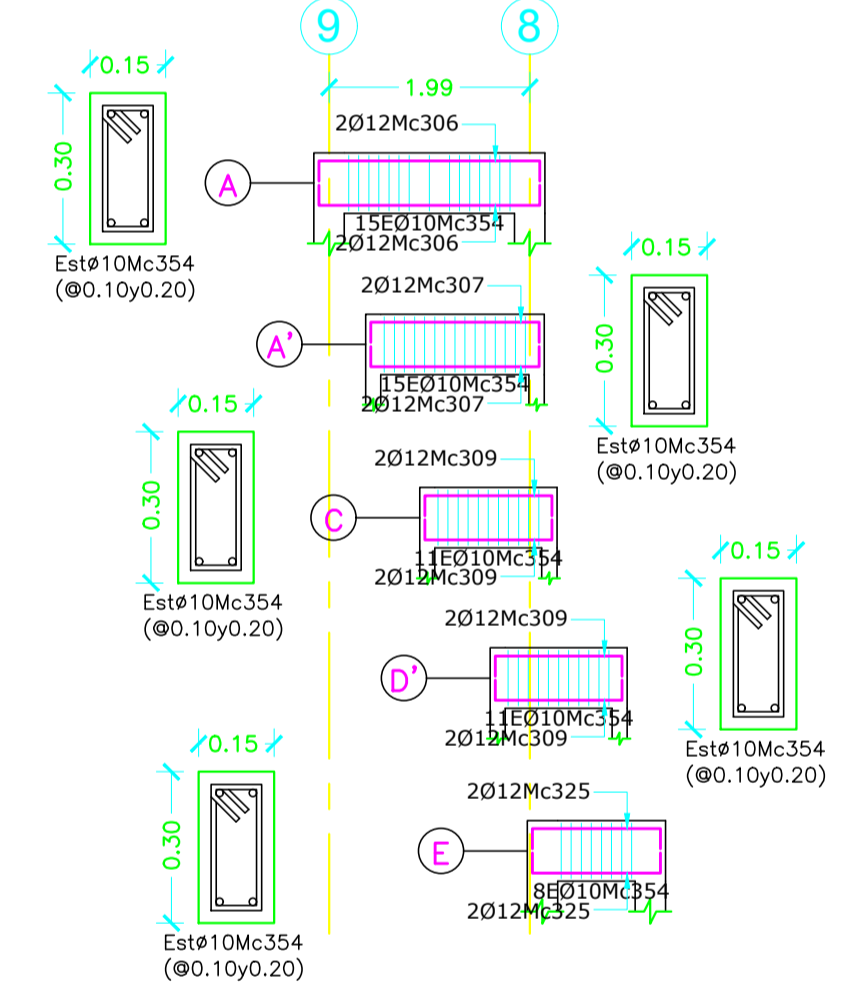
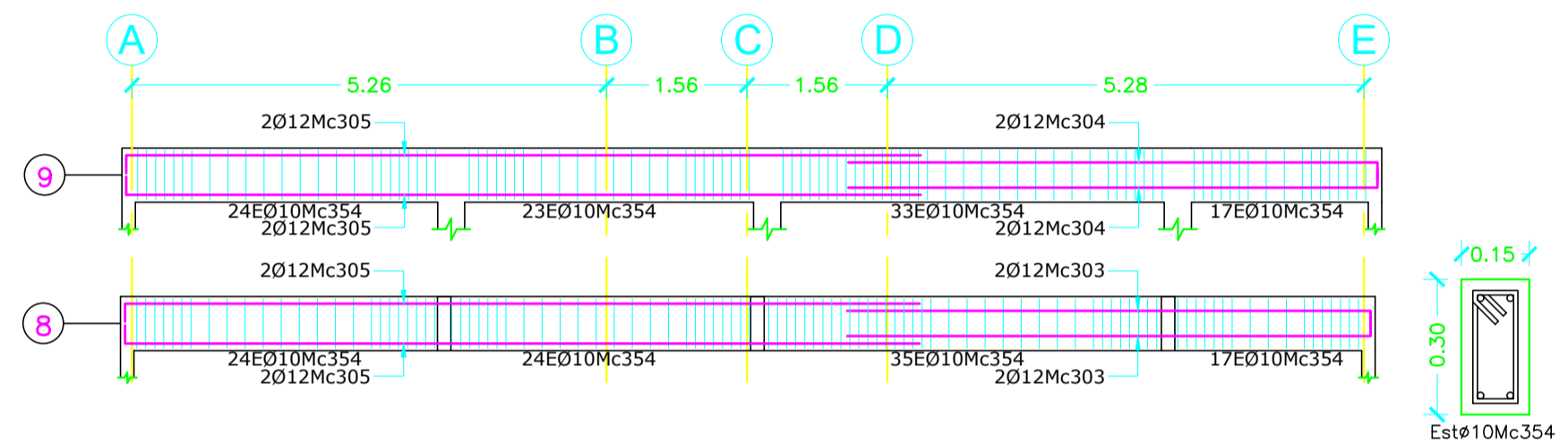
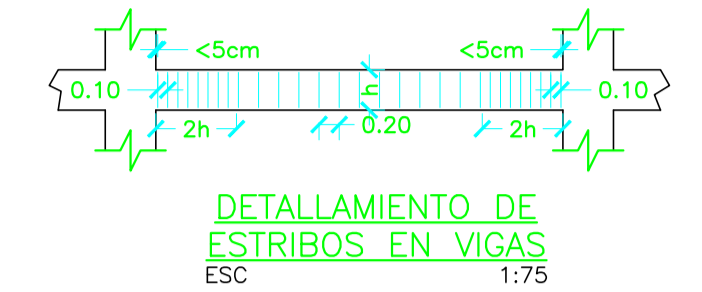
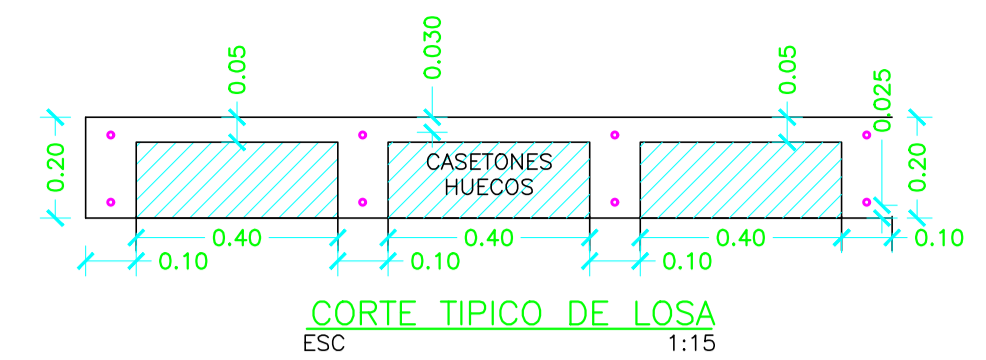
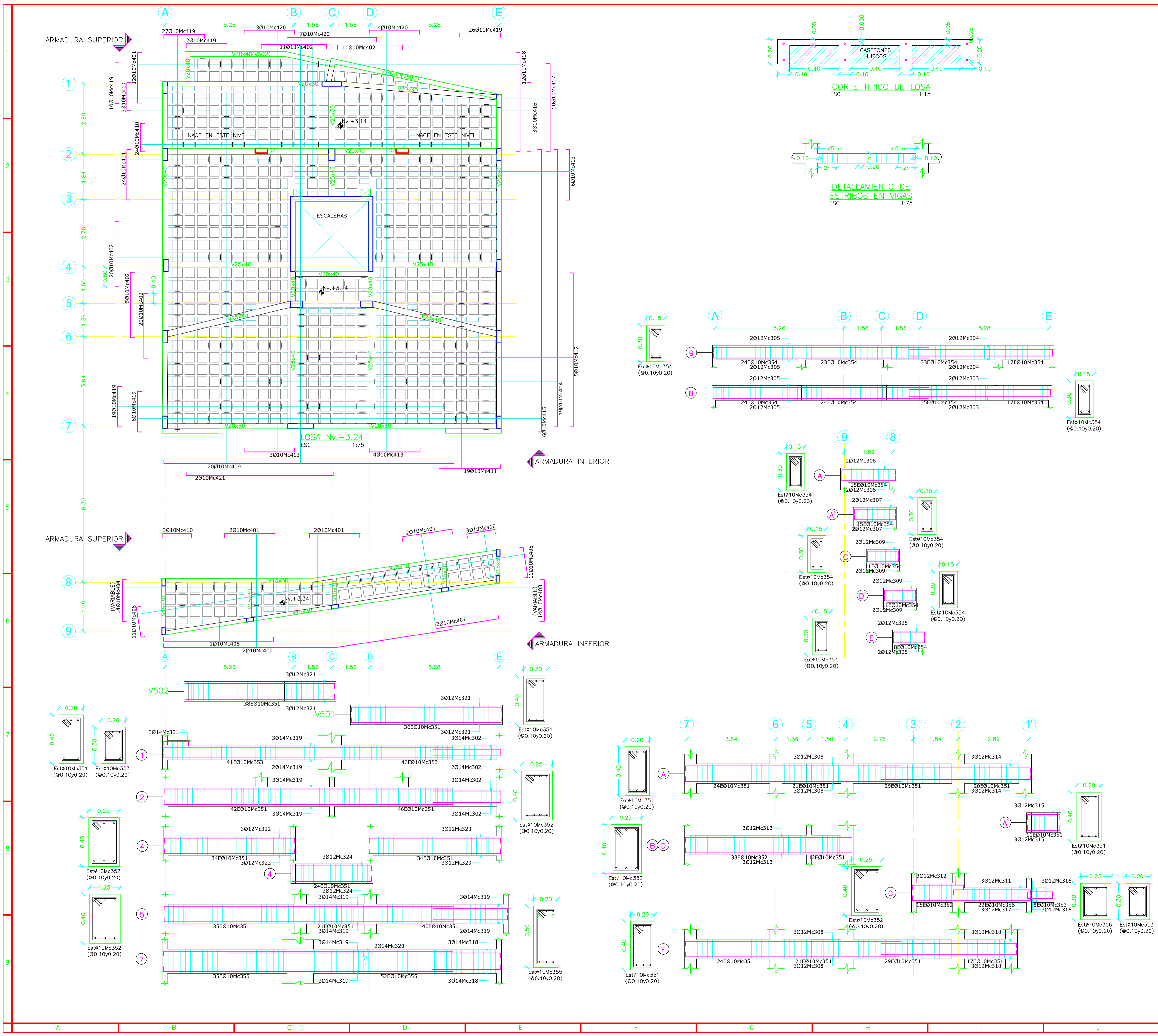
ITCHIMBIA

CONTIENE:	LOSA Y VIGAS Nv.+0.18	11	ABR	2023
		REVISION		E
		LAMINA		E.4

UBICACION : QUITO
 PROPIETARIO :
 DISEÑO ESTRUCTURAL : ING. JOSE LUIS MESIAS
 COLABORACION :
 DIBUJO : J.L.M.
 ESCALAS : INDICADAS (1:75)

SENECYT 1027-06-706426/EMOP 4923
 Firmado digitalmente por
JOSE LUIS MESIAS PAZMINO
 FRANCISCO XAVIER REDYIA GARZON
 Fecha: 2023.04.11 09:51:35 -0500
 PROPIETARIO : JOSE LUIS MESIAS (01-17-6767)

SELLOS MUNICIPALES



PLANILLA DE HIERROS

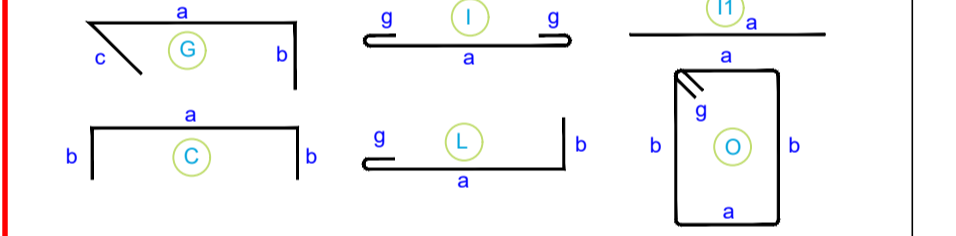
Mc	TIPO	Ø	No.	DIMENSIONES			Long. Desar. (m)	Long. Total	Peso Kg.	Observ.	
				a	b	c					
301	C	14	3	1.02	0.20	0.00	0.00	1.42	4.26	5.2	-
302	L	14	11	2.80	0.20	0.00	0.00	2	33	39.9	-
303	L	12	4	5.80	0.20	0.00	0.00	6	24	21.3	-
304	L	12	4	5.85	0.20	0.00	0.00	6.05	24.2	21.5	-
305	L	12	8	8.80	0.20	0.00	0.00	9	72	63.9	-
306	C	12	4	2.20	0.20	0.00	0.00	2.60	10.4	9.2	-
307	C	12	4	1.70	0.20	0.00	0.00	2.10	8.4	7.5	-
308	L	12	12	8.80	0.20	0.00	0.00	9	108	95.9	-
309	C	12	8	1.25	0.20	0.00	0.00	1.65	13.2	11.7	-
310	L	12	6	5.55	0.20	0.00	0.00	5.75	34.5	30.6	-
311	C	12	3	3.15	0.20	0.00	0.00	3.55	10.65	9.5	-
312	C	12	3	2.10	0.20	0.00	0.00	2.50	7.5	6.7	-
313	C	12	12	6.80	0.20	0.00	0.00	7.20	86.4	76.7	-
314	L	12	6	6.10	0.20	0.00	0.00	6.30	37.8	33.6	-
315	C	12	6	1.35	0.20	0.00	0.00	1.75	10.5	9.3	-
316	C	12	6	1.05	0.20	0.00	0.00	1.45	8.7	7.7	-
317	C	12	3	4.80	0.20	0.00	0.00	5.20	15.6	13.9	-
318	L	14	6	2.75	0.20	0.00	0.00	2.95	17.7	21.4	-
319	L	14	28	11.80	0.20	0.00	0.00	12	336	405.9	-
320	L	14	2	6.00	0.00	0.00	0.00	6	12	14.5	-
321	C	12	12	6.10	0.20	0.00	0.00	6.50	78	69.3	-
322	C	12	6	5.30	0.20	0.00	0.00	5.70	34.2	30.4	-
323	C	12	6	5.35	0.20	0.00	0.00	5.75	34.5	30.6	-
324	C	12	6	3.25	0.20	0.00	0.00	3.65	21.9	19.5	-
325	C	12	4	1.30	0.20	0.00	0.00	1.70	6.8	6.0	-
351	O	10	570	0.15	0.35	0.00	0.08	1.16	661.2	408.0	-
352	O	10	81	0.19	0.34	0.00	0.08	1.22	98.82	61.0	-
353	O	10	95	0.15	0.25	0.00	0.08	0.96	91.2	56.3	-
354	O	10	257	0.10	0.25	0.00	0.08	0.86	221.02	136.4	-
355	O	10	87	0.15	0.45	0.00	0.08	1.36	118.32	73	-
356	O	10	22	0.20	0.25	0.00	0.08	1.06	23.32	14.4	-
401	C	10	42	2.06	0.17	0.00	0.00	2.40	100.8	62.2	-
402	C	10	67	2.66	0.17	0.00	0.00	3	201	124.0	-
403	C	10	14	1.70	0.15	0.00	0.00	2	28	17.3	-
404	C	10	14	1.71	0.17	0.00	0.00	2.05	28.7	17.7	-
405	C	10	11	1.25	0.15	0.00	0.00	1.55	17.05	10.5	-
406	C	10	11	1.26	0.17	0.00	0.00	1.60	17.6	10.9	-
407	L	10	2	2.60	0.15	0.00	0.00	2.75	5.5	3.4	-
408	C	10	1	4.51	0.15	0.00	0.00	4.81	4.81	3.0	-
409	L	10	22	11.85	0.15	0.00	0.00	12	264	162.9	-
410	C	10	33	1.16	0.17	0.00	0.00	1.50	49.5	30.5	-
411	L	10	19	2.50	0.15	0.00	0.00	2.65	50.35	31.1	-
412	C	10	5	6.30	0.15	0.00	0.00	6.60	33	20.4	-
413	C	10	13	2.05	0.15	0.00	0.00	2.35	30.55	18.9	-
414	C	10	19	11.35	0.15	0.00	0.00	11.65	221.35	136.6	-
415	C	10	6	11.55	0.15	0.00	0.00	11.85	71.1	43.9	-
416	C	10	3	2.85	0.15	0.00	0.00	3.15	9.45	5.8	-
417	C	10	10	3.60	0.15	0.00	0.00	3.90	39	24.1	-
418	C	10	12	4.05	0.15	0.00	0.00	4.35	52.2	32.2	-
419	C	10	90	1.66	0.17	0.00	0.00	2	180	111.1	-
420	C	10	14	3.66	0.17	0.00	0.00	4	56	34.6	-
421	C	10	2	6.00	0.15	0.00	0.00	6.30	12.6	7.8	-

RESUMEN DE MATERIALES

Ø (mm)	8	10	12	14	16	18	20	22	25	28	32
W (Kg/m)	0.395	0.617	0.888	1.208	1.578	1.998	2.466	2.984	3.853	4.834	6.313
L (m)	0	2686	647	403	0	0	0	0	0	0	0
PESO (Kg)	0	1658	575	487	0	0	0	0	0	0	0

Wtot (Kg) = 2719
 LOSA NERVADA (m³) = 19.90
 VIGAS (m³) = 11.00
 CASQUETONES (40x40x15) = 635
 CASQUETONES (40x20x15) = 179

TIPOS DE HIERROS:



ESPECIFICACIONES GENERALES

HORMIGÓN f_{cm} = 210 Kg/cm² ACERO EN PERFILES F_y = 2530 Kg/cm² A36
 ACERO EN VARRILLAS f_y = 420 Kg/cm² ELECTRODO DE SOLDADURA = N.A.
 MALLA ELECTROSOLDADA f_y = 5000 Kg/cm² PERNOS PARA UNIONES = N.A.
 MADERA GRUPO (JUNAC) = N.A. PERNOS DE ANCLAJE = 2530 Kg/cm² A36

TODOS LOS TRABAJOS EN HORMIGÓN SE REALIZAN DE CONFORMIDAD CON LOS REQUERIMIENTOS DEL CODIGO ACI 301 ACTUALIZADO (SPECIFICATIONS FOR STRUCTURAL CONCRETE)
 LOS TRABAJOS EN ACERO SE REALIZAN DE CONFORMIDAD CON LOS REQUERIMIENTOS DEL CODIGO AISC 303 ACTUALIZADO (CODE OF STANDARD PRACTICE FOR STEEL BUILDINGS)

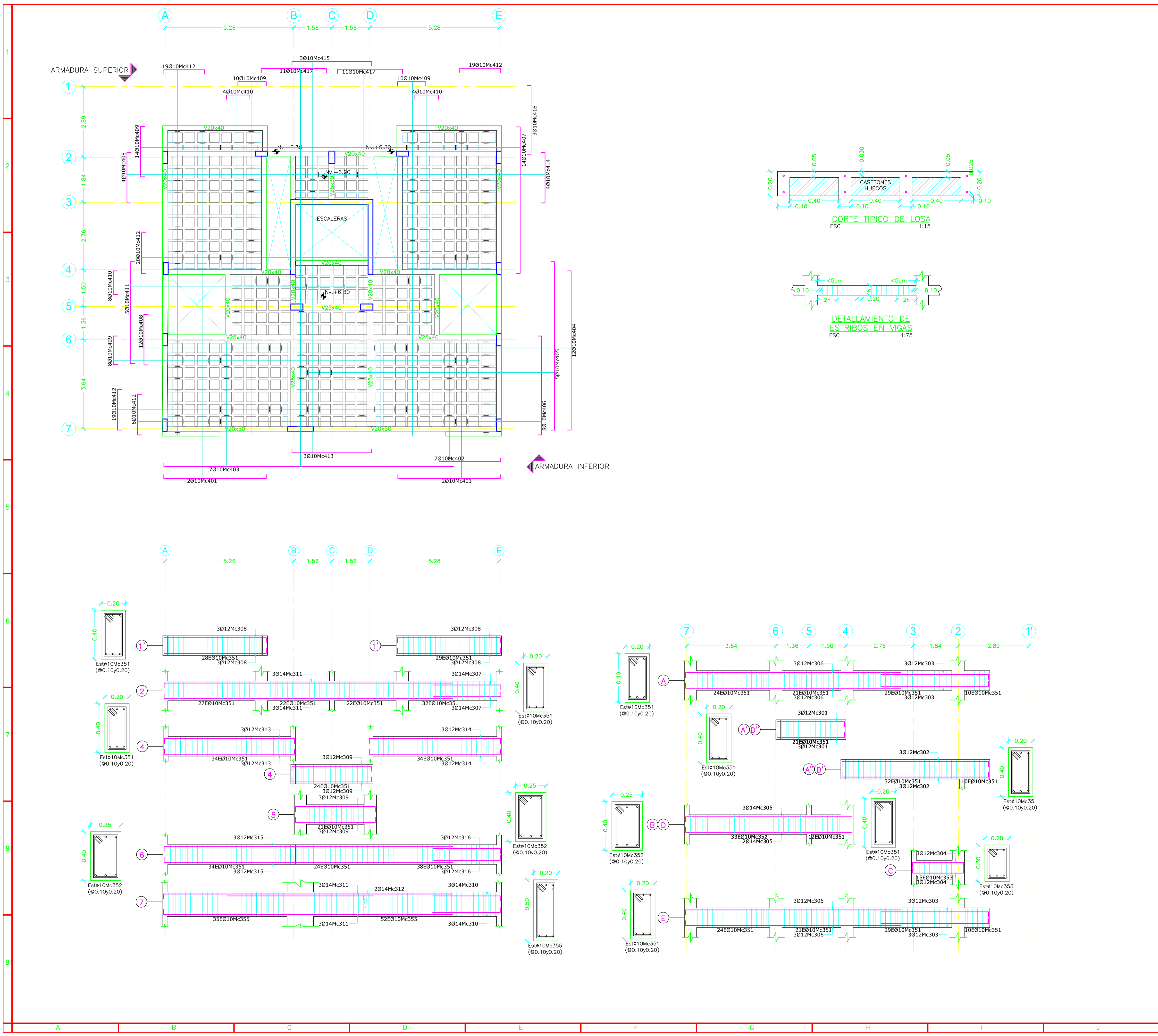
ITCHIMBIA

CONTIENE:	11	ABR	2023
REVISION	E		
LAMINA	E.5		

UBICACION : QUITO
 PROPIETARIO :
 DISEÑO ESTRUCTURAL : ING. JOSE LUIS MESIAS
 COLABORACION :
 DIBUJO : J.L.M.
 ESCALAS : INDICADAS (1:75)

SENECYT 1027-06-706426/EMOP 4923
 Firmado digitalmente por
JOSE LUIS MESIAS PAZMINO
 Fecha: 2023.04.11 09:51:59
 PROPIETARIO: JOSE LUIS MESIAS (01-17-6767)

SELLOS MUNICIPALES



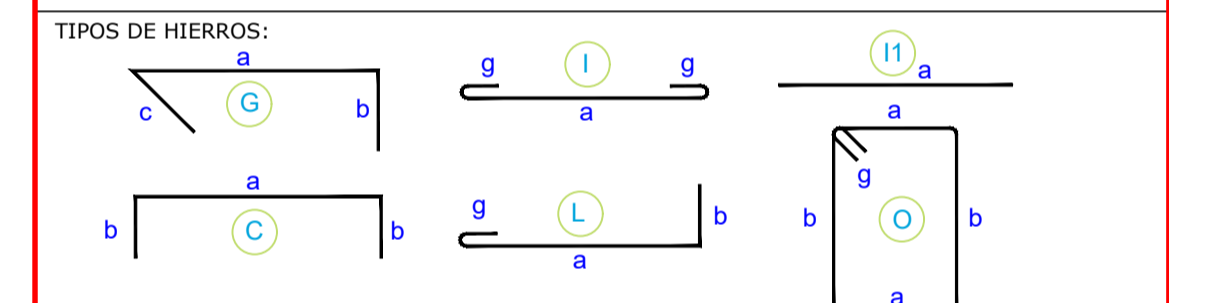
PLANILLA DE HIERROS

Mc	TIPO	Ø mm	No.	DIMENSIONES				Long. Desar. (m)	Long. Total	Peso Kg.	Observ.
				a	b	c	g				
301	C	12	12	2.75	0.20	0.00	0.00	3.15	37.8	33.6	-
302	C	12	12	6.00	0.20	0.00	0.00	6.40	76.8	68.2	-
303	L	12	12	4.40	0.20	0.00	0.00	4.60	55.2	49.0	-
304	C	12	6	2.10	0.20	0.00	0.00	2.50	15	13.3	-
305	C	14	10	6.80	0.20	0.00	0.00	7.20	72	87.0	-
306	L	12	12	8.80	0.20	0.00	0.00	9	108	95.9	-
307	L	14	6	2.80	0.20	0.00	0.00	3	18	21.7	-
308	C	12	12	4.20	0.20	0.00	0.00	4.60	55.2	49.0	-
309	C	12	12	3.25	0.20	0.00	0.00	3.65	43.8	38.9	-
310	L	14	6	2.75	0.20	0.00	0.00	2.95	17.7	21.4	-
311	L	14	12	11.80	0.20	0.00	0.00	12	144	174.0	-
312	II	14	2	6.00	0.00	0.00	0.00	6	12	14.5	-
313	C	12	6	5.30	0.20	0.00	0.00	5.70	34.2	30.4	-
314	C	12	6	5.35	0.20	0.00	0.00	5.75	34.5	30.6	-
315	L	12	6	11.80	0.20	0.00	0.00	12	72	63.9	-
316	L	12	6	2.75	0.20	0.00	0.00	2.95	17.7	15.7	-
351	O	10	762	0.15	0.35	0.00	0.08	1.16	883.92	545.4	-
352	O	10	33	0.19	0.34	0.00	0.08	1.22	40.26	24.8	-
353	O	10	15	0.15	0.25	0.00	0.08	0.96	14.4	8.9	-
355	O	10	87	0.15	0.45	0.00	0.08	1.36	118.32	73	-
401	C	10	4	4.20	0.15	0.00	0.00	4.50	18	11.1	-
402	L	10	7	2.50	0.15	0.00	0.00	2.65	18.55	11.5	-
403	L	10	7	11.85	0.15	0.00	0.00	12	84	51.8	-
404	C	10	12	6.50	0.15	0.00	0.00	6.80	81.6	50.4	-
405	C	10	5	6.90	0.15	0.00	0.00	7.20	36	22.2	-
406	C	10	8	4.05	0.15	0.00	0.00	4.35	34.8	21.5	-
407	C	10	14	5.98	0.15	0.00	0.00	6.28	87.92	54.3	-
408	C	10	16	2.06	0.17	0.00	0.00	2.40	38.4	23.7	-
409	C	10	42	1.16	0.17	0.00	0.00	1.50	63	38.9	-
410	C	10	16	0.96	0.17	0.00	0.00	1.30	20.8	12.8	-
411	C	10	5	4.16	0.17	0.00	0.00	4.50	22.5	13.9	-
412	C	10	83	1.66	0.17	0.00	0.00	2	166	102.4	-
413	C	10	3	3.25	0.15	0.00	0.00	3.55	10.65	6.6	-
414	C	10	4	2.05	0.15	0.00	0.00	2.35	9.4	5.8	-
415	C	10	3	3.26	0.17	0.00	0.00	3.60	10.8	6.7	-
416	C	10	3	2.85	0.15	0.00	0.00	3.15	9.45	5.8	-
417	C	10	22	2.66	0.17	0.00	0.00	3	66	40.7	-

RESUMEN DE MATERIALES

Ø (mm)	8	10	12	14	16	18	20	22	25	28	32
W (Kg/m)	0.395	0.617	0.888	1.208	1.578	1.998	2.466	2.984	3.853	4.834	6.313
L (m)	0	1835	550	264	0	0	0	0	0	0	0
PESO (Kg)	0	1132	489	319	0	0	0	0	0	0	0

Wtot (Kg) = 1939 LOSA NERVADA (m3) = 11.85
 VIGAS (m3) = 8.60
 CASETONES (40x40x15) = 406
 CASETONES (40x20x15) = 108



ESPECIFICACIONES GENERALES
 HORMIGÓN f'c = 210 Kg/cm2 ACERO EN PERFILES Fy = 2530 Kg/cm2 A36
 ACERO EN VARILLAS fy = 4200 Kg/cm2 ELECTRODO DE SOLDADURA= N.A.
 MALLA ELECTROSOLDADA fy = 5000 Kg/cm2 PERNOS PARA UNIONES= N.A.
 MADERA GRUPO (JUNAC) = N.A. PERNOS DE ANCLAJE = 2530 Kg/cm2 A36

TODOS LOS TRABAJOS EN HORMIGÓN SE REALIZARAN DE CONFORMIDAD CON LOS REQUERIMIENTOS DEL CODIGO ACI 301 ACTUALIZADO (SPECIFICATIONS FOR STRUCTURAL CONCRETE)
 LOS TRABAJOS EN ACERO SE REALIZARAN DE CONFORMIDAD CON LOS REQUERIMIENTOS DEL CODIGO AISC 303 ACTUALIZADO (CODE OF STANDARD PRACTICE FOR STEEL BUILDINGS)

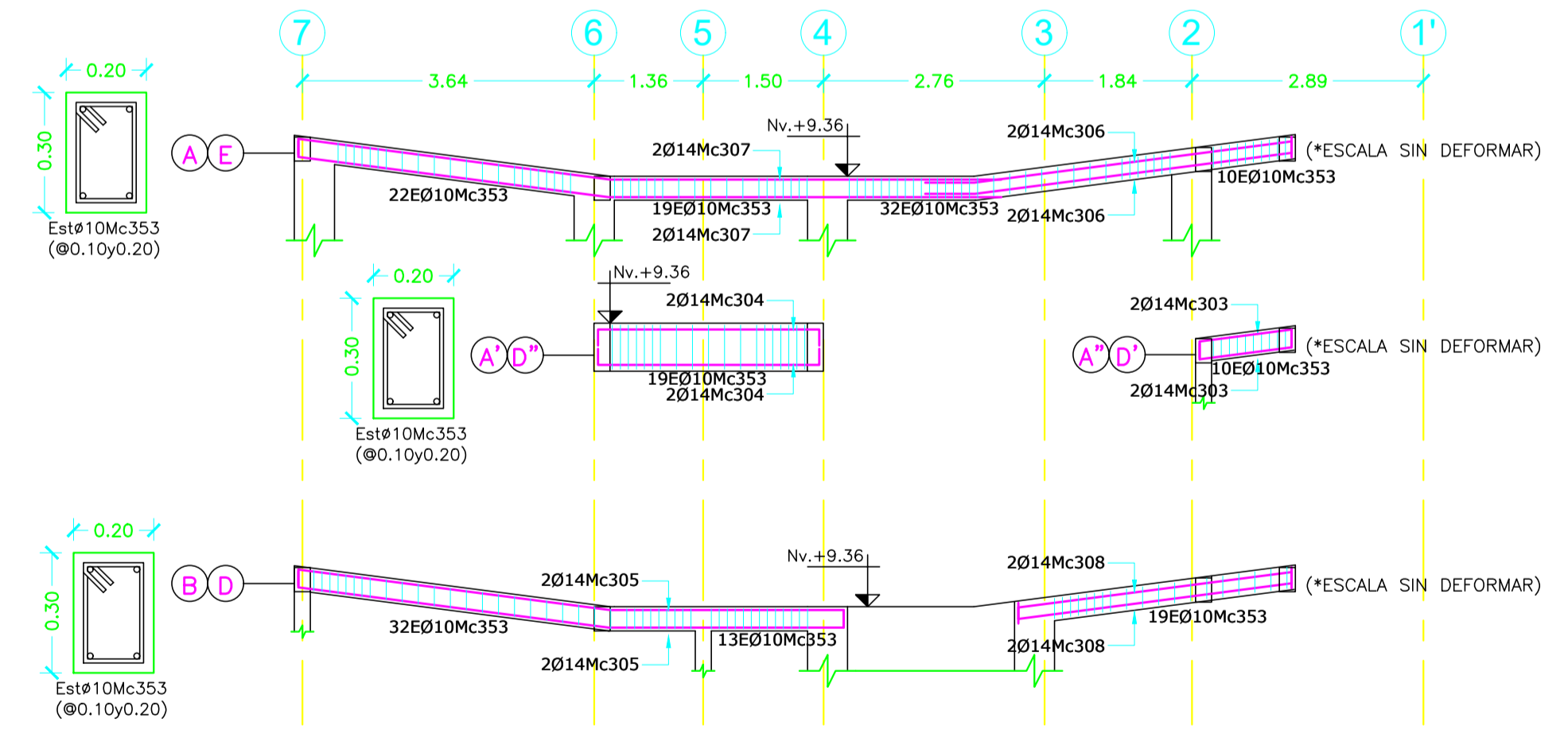
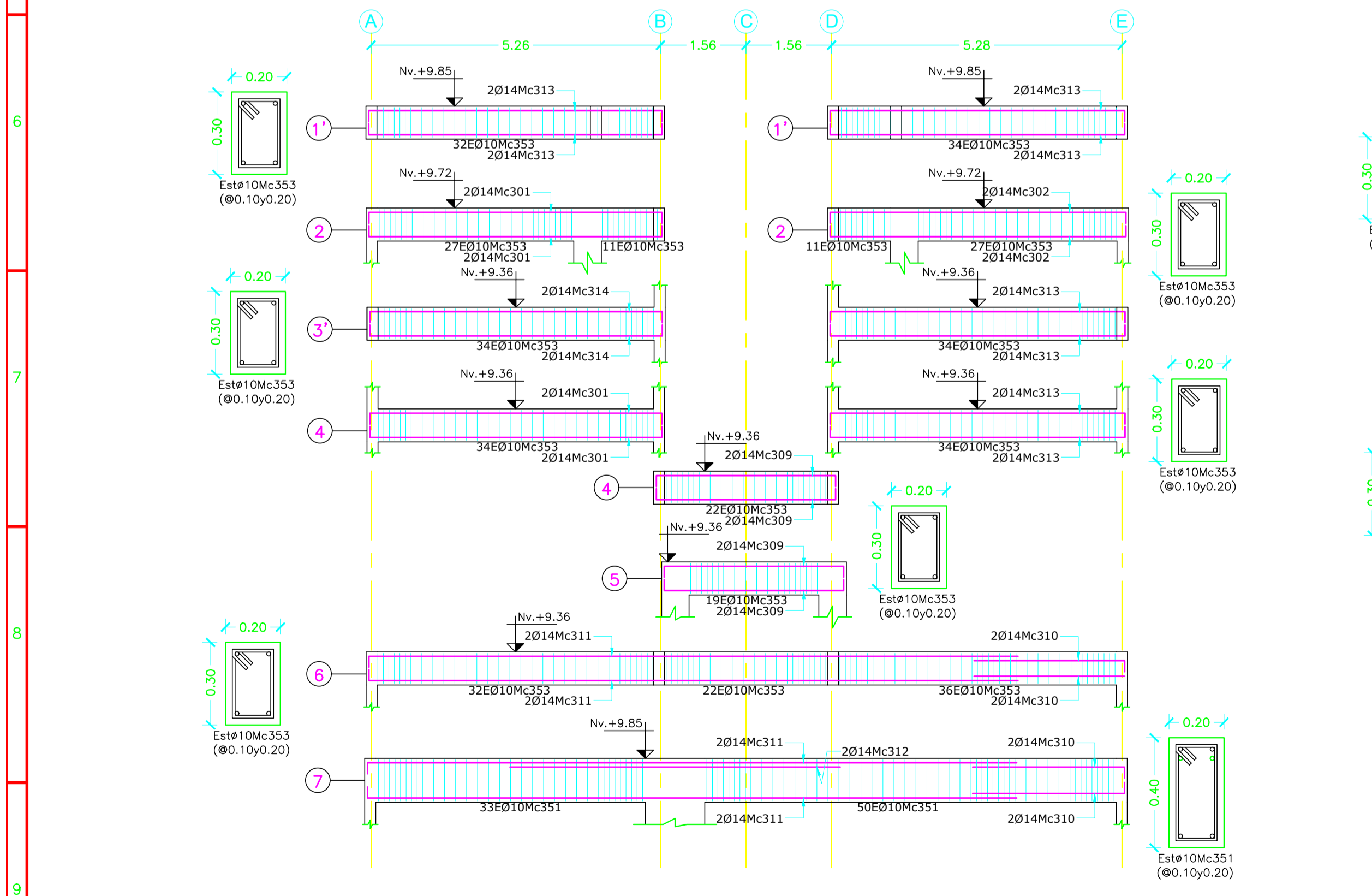
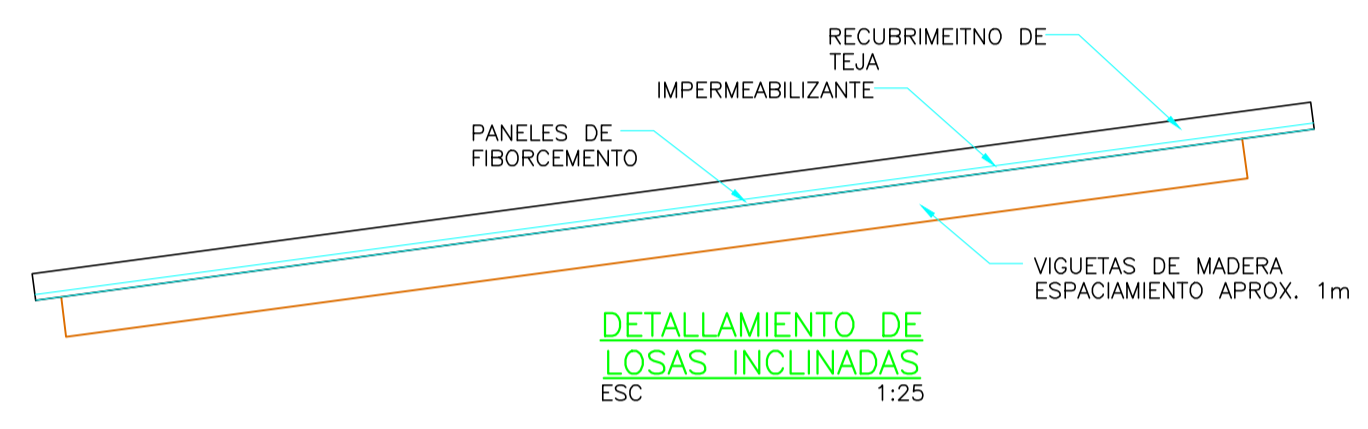
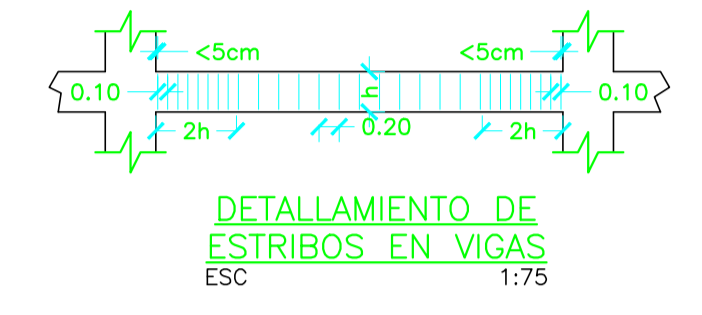
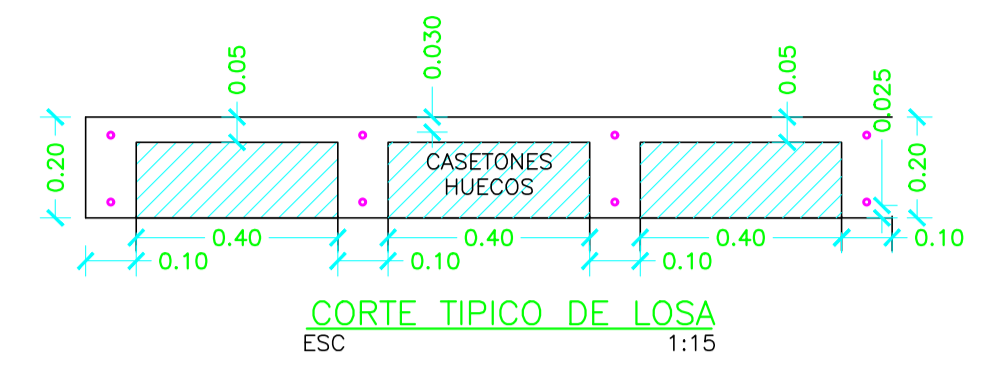
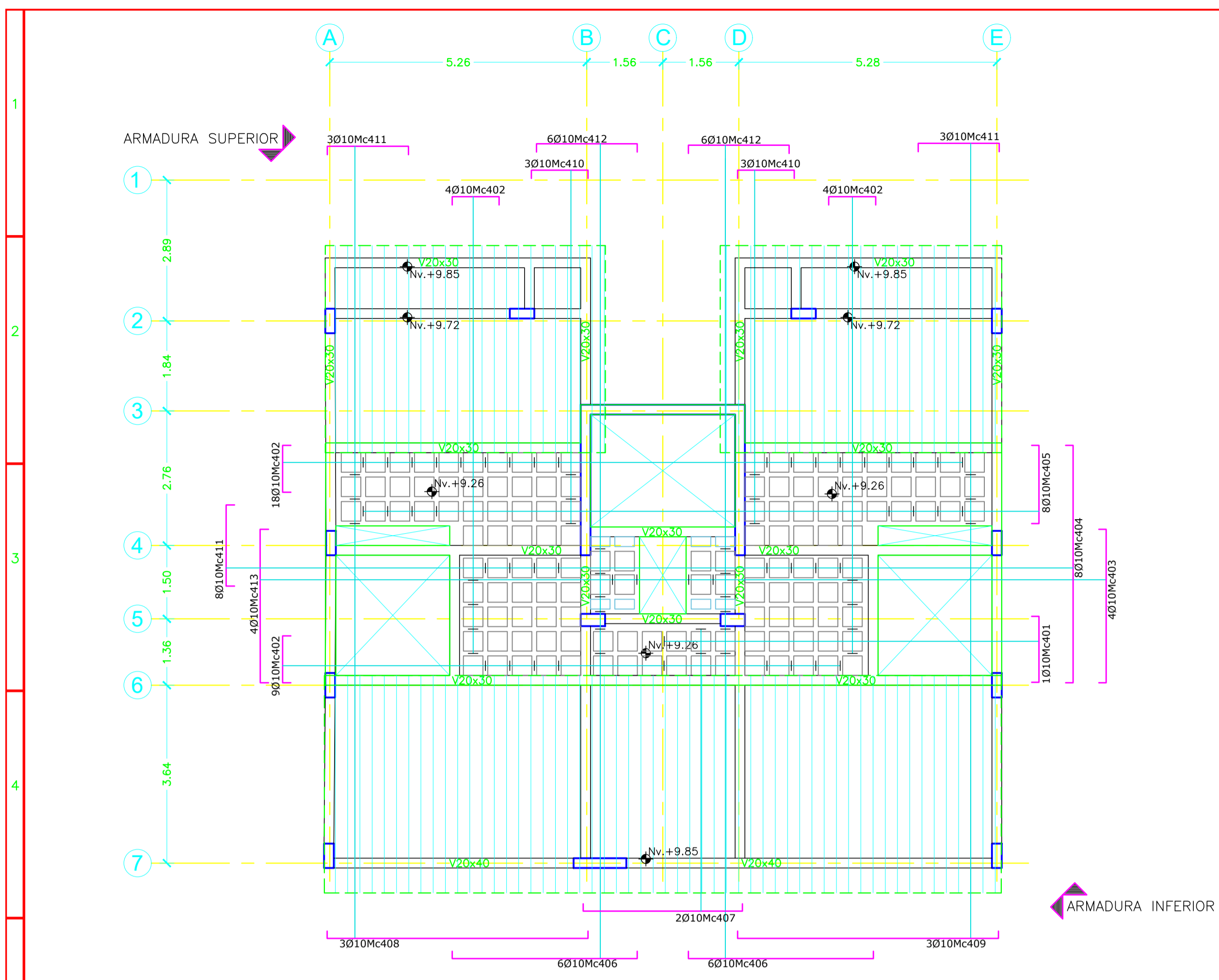
ITCHIMBIA

CONTIENE:	LOSA Y VIGAS Nv.+6.30	11	ABR	2023
		REVISION	E	
		LAMINA	E.6	

UBICACION : QUITO
 PROPIETARIO :
 DISEÑO ESTRUCTURAL : ING. JOSE LUIS MESIAS
 COLABORACION :
 DIBUJO : J.L.M.
 ESCALAS : INDICADAS (1:75)

SENESCYT 1027-06-706426/EMOP 4923
 Firmado digitalmente por FRANCISCO XAVIER MEZIA GARZON
 JOSE LUIS MESIAS PAZMINO
 Fecha: 2023.04.11 09:52:30 -0500
 PROPIETARIO JOSE LUIS MESIAS (01-17-6767)

SELLOS MUNICIPALES



PLANILLA DE HIERROS

Mc	TIPO	Ø mm	No.	DIMENSIONES				Long. Desar. (m)	Long. Total	Peso Kg.	Observ.
				a	b	c	g				
MARCAS 300 400											
301	C	14	8	5.30	0.20	0.00	0.00	5.70	45.6	55.1	-
302	C	14	4	5.40	0.20	0.00	0.00	5.80	23.2	28.0	-
303	C	14	8	1.15	0.20	0.00	0.00	1.55	12.4	15.0	-
304	C	14	8	2.75	0.20	0.00	0.00	3.15	25.2	30.4	-
305	C	14	8	6.85	0.20	0.00	0.00	7.25	58	70.1	-
306	L	14	8	4.60	0.20	0.00	0.00	4.80	38.4	46.4	-
307	L	14	8	8.80	0.20	0.00	0.00	9	72	87.0	-
308	C	14	8	3.45	0.20	0.00	0.00	3.85	30.8	37.2	-
309	C	14	8	3.25	0.20	0.00	0.00	3.65	29.2	35.3	-
310	L	14	8	2.75	0.20	0.00	0.00	2.95	23.6	28.5	-
311	L	14	8	11.80	0.20	0.00	0.00	12	96	116.0	-
312	II	14	2	6.00	0.00	0.00	0.00	6	12	14.5	-
313	C	14	16	5.35	0.20	0.00	0.00	5.75	92	111.1	-
314	C	14	4	1.80	0.20	0.00	0.00	2.20	8.8	10.6	-
351	O	10	83	0.15	0.35	0.00	0.08	1.16	96.28	59.4	-
353	O	10	761	0.15	0.25	0.00	0.08	0.96	730.56	450.8	-

Mc	TIPO	Ø mm	No.	DIMENSIONES				Long. Desar. (m)	Long. Total	Peso Kg.	Observ.
				a	b	c	g				
MARCAS 400											
401	C	10	1	1.35	0.15	0.00	0.00	1.65	1.65	1.0	-
402	C	10	35	0.96	0.17	0.00	0.00	1.30	45.5	28.1	-
403	C	10	4	3.14	0.15	0.00	0.00	3.44	13.76	8.5	-
404	C	10	8	4.86	0.15	0.00	0.00	5.16	41.28	25.5	-
405	C	10	8	1.60	0.15	0.00	0.00	1.90	15.2	9.4	-
406	C	10	12	3.80	0.15	0.00	0.00	4.10	49.2	30.4	-
407	C	10	2	3.25	0.15	0.00	0.00	3.55	7.1	4.4	-
408	C	10	3	5.35	0.15	0.00	0.00	5.65	16.95	10.5	-
409	C	10	3	5.34	0.15	0.00	0.00	5.64	16.92	10.4	-
410	C	10	6	1.16	0.17	0.00	0.00	1.50	9	5.6	-
411	C	10	14	1.66	0.17	0.00	0.00	2	28	17.3	-
412	C	10	12	2.06	0.17	0.00	0.00	2.40	28.8	17.8	-
413	C	10	4	3.16	0.17	0.00	0.00	3.50	14	8.6	-

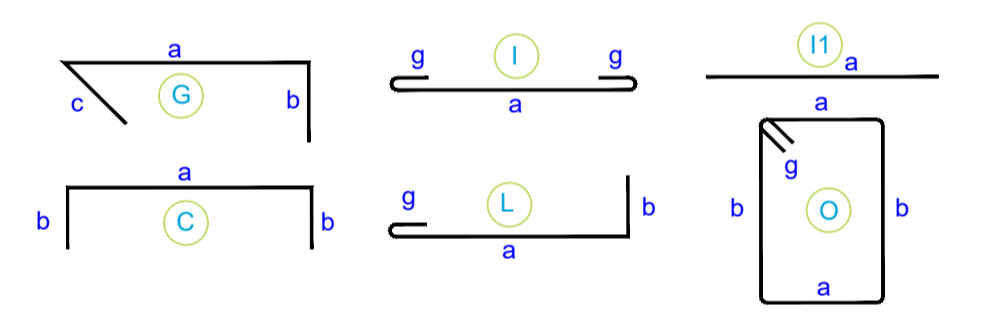
RESUMEN DE MATERIALES

Ø (mm)	8	10	12	14	16	18	20	22	25	28	32
W (Kg/m)	0.395	0.617	0.888	1.208	1.578	1.998	2.466	2.984	3.853	4.834	6.313
L (m)	0	1114	0	567	0	0	0	0	0	0	0
PESO (Kg)	0	687	0	685	0	0	0	0	0	0	0

Wtot (Kg) = 1373

LOSA NERVADA (m3) = 3.75
 VIGAS (m3) = 7.20
 CASETONES (40x40x15) = 140
 CASETONES (40x20x15) = 8

TIPOS DE HIERROS:



ESPECIFICACIONES GENERALES

HORMIGÓN f'c= 210 Kg/cm2 ACERO EN PERFILES Fy= 2530 Kg/cm2 A36
 ACERO EN VARILLAS fy= 4200 Kg/cm2 ELECTRODO DE SOLDADURA= N.A.
 MALLA ELECTROSOLDADA fy= 5000 Kg/cm2 PERNOS PARA UNIONES= N.A.
 MADERA GRUPO (JUNAC)= N.A. PERNOS DE ANCLAJE= 2530 Kg/cm2 A36

TODOS LOS TRABAJOS EN HORMIGÓN SE REALIZARÁN DE CONFORMIDAD CON LOS REQUERIMIENTOS DEL CÓDIGO ACI 301 ACTUALIZADO (SPECIFICATIONS FOR STRUCTURAL CONCRETE)
 LOS TRABAJOS EN ACERO SE REALIZARÁN DE CONFORMIDAD CON LOS REQUERIMIENTOS DEL CÓDIGO AISC 303 ACTUALIZADO (CODE OF STANDARD PRACTICE FOR STEEL BUILDINGS)

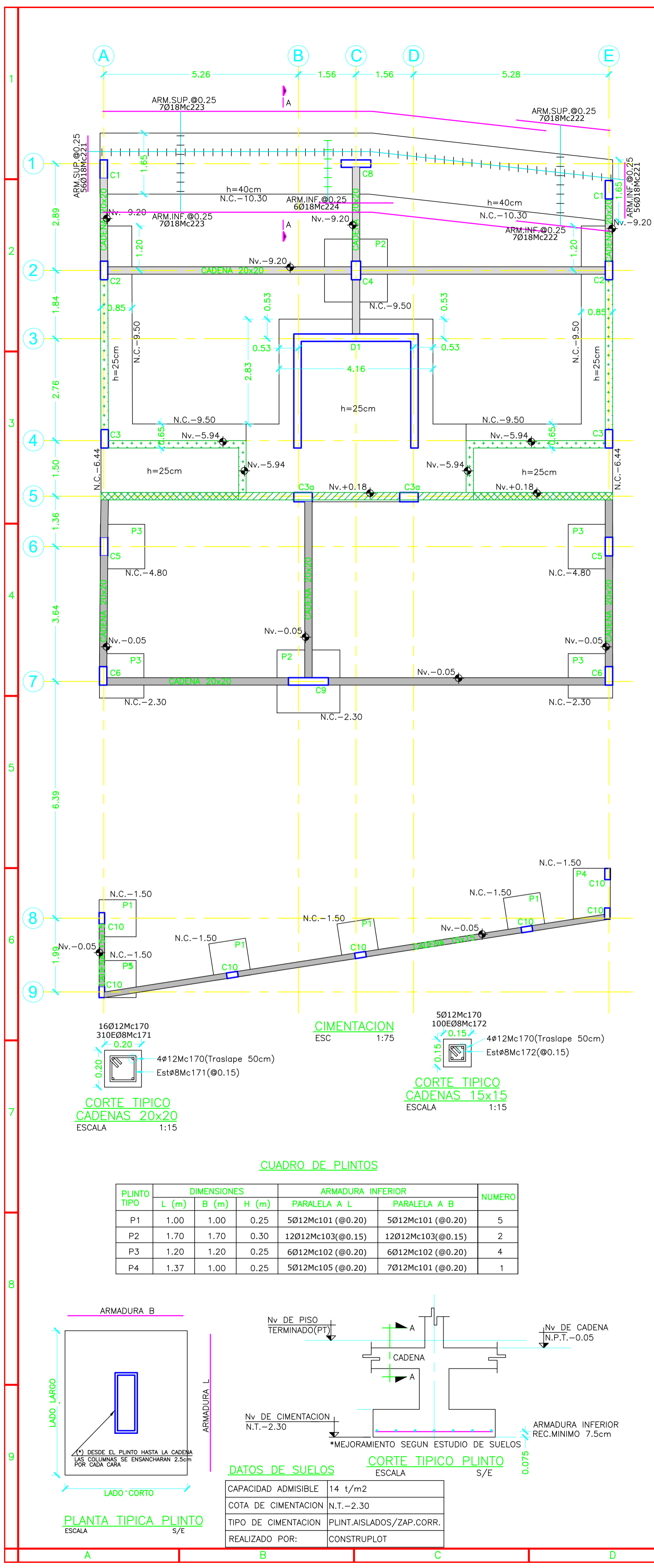
ITCHIMBIA

CONTIENE:	LOSA Y VIGAS Nv.+9.36	11	ABR	2023
		REVISION	E	
		LAMINA	E.7	

UBICACION : QUITO
 PROPIETARIO :
 DISEÑO ESTRUCTURAL : ING. JOSE LUIS MESIAS
 COLABORACION :
 DIBUJO : J.L.M.
 ESCALAS : INDICADAS (1:75)

SENECYT 1027-06-706426/EMOP 4923
 FRANCISCO SANTIAGO GARZON
 JOSE LUIS MESIAS PAZMINO
 Firmado digitalmente por JOSE LUIS MESIAS PAZMINO
 Fecha: 2023.04.11 09:52:54 -0500
 PROPIETARIO JOSE LUIS MESIAS (01-17-6767)

SELLOS MUNICIPALES



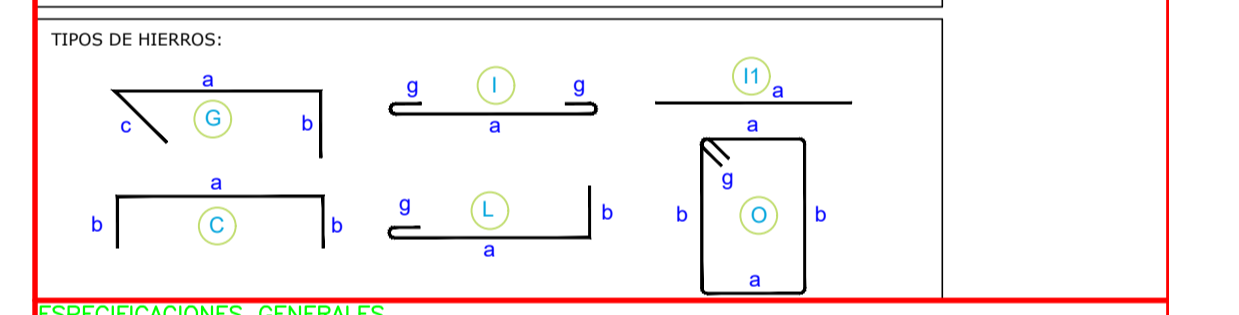
	C1 (2u)	C2 (2u)	C3 (2u)	C3a (2u)	C4 (1u)	C5 (2u)	C6 (2u)	C7 (2u)	C8 (1u)	C9 (1u)	D1 (1u)	
ESC 1:15												
	Est#10Mc231 Est#10Mc232 Est#10Mc233 (@0.075 TODA LA ALTURA)	Est#10Mc231 Est#10Mc232 Est#10Mc233 (@0.075 TODA LA ALTURA)	Est#10Mc231 Est#10Mc232 Est#10Mc233 (@0.075 TODA LA ALTURA)	Est#10Mc238 Est#10Mc239 (@0.075 TODA LA ALTURA)	Est#10Mc238 Est#10Mc239 (@0.075 TODA LA ALTURA)	Est#10Mc231 Est#10Mc232 Est#10Mc233 (@0.075 TODA LA ALTURA)	Est#10Mc231 Est#10Mc232 Est#10Mc233 (@0.075 TODA LA ALTURA)	Est#10Mc231 Est#10Mc232 Est#10Mc233 (@0.075 TODA LA ALTURA)	Est#10Mc231 Est#10Mc232 Est#10Mc233 (@0.075 TODA LA ALTURA)	Est#10Mc233 Est#10Mc234 Est#10Mc235 (@0.075 TODA LA ALTURA)	Est#10Mc238 Est#10Mc239 (@0.075 TODA LA ALTURA)	VER CORTE DE DIAFRAGMA D1 EN LAMINA E2
	179E010Mc231 179E010Mc232	255E010Mc231 255E010Mc232	250E010Mc231 250E010Mc232	250E010Mc238 250E010Mc239	209E010Mc238 209E010Mc239	187E010Mc231 187E010Mc232	160E010Mc231 160E010Mc232	90E010Mc231 90E010Mc232		160E010Mc236 320E010Mc234		
											CAB1 (2u) CAB2 (2u) ALMA1 (2u) ALMA2 (1u)	
Nv. +9.85												
Nv. +9.72												
Nv. +9.36												
Nv. +6.30												
Nv. +3.24												
Nv. +0.18												
Nv. +0.00												
Nv. -2.30												
Nv. -2.88												
Nv. -4.80												
Nv. -5.94												
Nv. -9.00												
Nv. -9.50												
Nv. -10.30												

Mc	TIPO	Ø mm	No.	DIMENSIONES				Long. Desarr. (m)	Long. Total	Peso Kg.	Observ.
				a	b	c	g				
101	11	12	57	0.90	0.00	0.00	0.00	0.90	51.3	45.6	-
102	11	12	48	1.05	0.00	0.00	0.00	1.05	50.4	44.8	-
103	11	12	48	1.55	0.00	0.00	0.00	1.55	74.4	66.1	-
105	11	12	5	1.25	0.00	0.00	0.00	1.25	6.25	5.6	-
170	11	12	21	12.00	0.00	0.00	0.00	12	252	223.8	-
171	O	8	310	0.14	0.14	0.00	0.07	0.70	217	85.7	-
172	O	8	100	0.09	0.09	0.00	0.07	0.50	50	19.8	-
190	11	14	22	12.00	0.00	0.00	0.00	12	264	318.9	-
191	11	12	43	12.00	0.00	0.00	0.00	12	516	458.2	-
192	11	10	215	12.00	0.00	0.00	0.00	12	2580	1591.9	-
193	11	12	42	12.00	0.00	0.00	0.00	12	504	447.6	-
194	11	10	42	12.00	0.00	0.00	0.00	12	504	311.0	-
201	C	16	20	6.75	0.20	0.00	0.00	7.15	143	225.7	-
202	L	16	61	8.50	0.20	0.00	0.00	8.70	530.7	837.4	-
203	L	16	17	6.10	0.20	0.00	0.00	6.30	107.1	169	-
204	L	8	41	11.00	0.20	0.00	0.00	11.20	459.2	181.4	-
205	L	8	41	5.00	0.20	0.00	0.00	5.20	213.2	84.2	-
206	L	16	56	5.00	0.20	0.00	0.00	5.20	291.2	459.5	-
207	L	16	46	11.80	0.20	0.00	0.00	11.20	515.2	813.0	-
208	11	16	56	10.00	0.00	0.00	0.00	10	560	883.7	-
209	L	16	19	7.10	0.20	0.00	0.00	7.30	138.7	218.9	-
210	L	16	19	10.30	0.20	0.00	0.00	10.50	199.5	314.8	-
211	L	16	19	2.50	0.20	0.00	0.00	2.70	51.3	81.0	-
212	L	16	19	5.70	0.20	0.00	0.00	5.90	112.1	176.9	-
213	L	16	17	4.90	0.20	0.00	0.00	5.10	86.7	136.8	-
214	L	16	17	8.10	0.20	0.00	0.00	8.30	141.1	222.7	-
215	L	16	17	9.30	0.20	0.00	0.00	9.50	161.5	254.9	-
216	L	16	10	5.40	0.20	0.00	0.00	5.60	56	88.4	-
217	L	16	10	11.40	0.20	0.00	0.00	11.60	116	183.1	-
218	L	16	5	11.15	0.20	0.00	0.00	11.35	56.75	89.6	-
219	L	16	5	7.95	0.20	0.00	0.00	8.15	40.5	64.3	-
220	C	14	28	4.70	0.15	0.00	0.00	5	140	169.1	-
221	11	18	112	1.50	0.00	0.00	0.00	1.50	168	335.7	-
222	11	18	14	2.55	0.00	0.00	0.00	2.55	35.7	71.3	-
223	11	18	14	12.00	0.00	0.00	0.00	12	168	335.7	-
224	11	18	6	2.00	0.00	0.00	0.00	2	12	24.0	-
225	L	8	41	5.30	0.20	0.00	0.00	5.50	225.5	89.1	-
226	L	8	41	8.50	0.20	0.00	0.00	8.70	356.7	140.9	-
227	L	16	61	5.30	0.20	0.00	0.00	5.50	335.5	529.4	-
228	L	16	10	6.50	0.20	0.00	0.00	6.70	67	105.7	-
229	L	16	10	8.00	0.20	0.00	0.00	8.20	82	129.4	-
230	L	16	10	9.50	0.20	0.00	0.00	9.70	97	153.1	-
231	O	10	3742	0.15	0.45	0.00	0.08	1.36	5089.123140.0	-	-
232	O	10	3742	0.15	0.14	0.00	0.08	0.74	2769.041708.5	-	-
233	O	10	179	0.15	0.75	0.00	0.08	1.96	350.84	216.5	-
234	O	10	499	0.15	0.16	0.00	0.08	0.78	389.22	240.2	-
235	G	10	179	0.15	0.10	0.08	0.00	0.33	59.07	36.5	-
236	O	10	160	0.15	1.03	0.00	0.08	2.52	403.2	248.8	-
237	O	10	441	0.10	0.25	0.00	0.07	0.84	370.44	228.6	-
238	O	10	709	0.19	0.44	0.00	0.08	1.42	1006.78	621.2	-
239	O	10	709	0.19	0.14	0.00	0.08	0.82	581.38	358.7	-
240	C	8	500	3.00	0.15	0.00	0.00	3.30	1650	651.8	-
241	C	8	250	3.30	0.15	0.00	0.00	3.60	900	355.5	-

RESUMEN DE MATERIALES

Ø (mm)	8	10	12	14	16	18	20	22	25	28	32
W (Kg/m)	0.395	0.617	0.888	1.208	1.578	1.998	2.466	2.984	3.553	4.834	6.313
L (m)	4072	14103	1454	404	3889	384	0	0	0	0	0
PESO (Kg)	1608	8702	1291	488	6137	767	0	0	0	0	0

Wtot (Kg) = 8993 PLINTOS Y ZAPATAS CORRIDAS (m3) = 14.00
 COLUMNAS Y DIAFRAGMAS (m3) = 60.70 CADENAS (m3) = 2.20
 MUROS (m3) = 44.85



ESPECIFICACIONES GENERALES

HORMIGÓN f_{cm} = 210 Kg/cm² ACERO EN PERFILES F_y = 2530 Kg/cm² A36
 ACERO EN VARILLAS f_y = 4200 Kg/cm² ELECTRODO DE SOLDADURA = N.A.
 MALLA ELECTROSOLDADA f_y = 5000 Kg/cm² PERNOS PARA UNIONES = N.A.
 MADERA GRUPO (JUNAC) = N.A. PERNOS DE ANCLAJE = 2530 Kg/cm² A36

TODOS LOS TRABAJOS EN HORMIGÓN SE REALIZARÁN DE CONFORMIDAD CON LOS REQUERIMIENTOS DEL CODIGO ACI 301 ACTUALIZADO (SPECIFICATIONS FOR STRUCTURAL CONCRETE)
 LOS TRABAJOS EN ACERO SE REALIZARÁN DE CONFORMIDAD CON LOS REQUERIMIENTOS DEL CODIGO AISC 303 ACTUALIZADO (CODE OF STANDARD PRACTICE FOR STEEL BUILDINGS)

ITCHIMBIA

CONTIENE:	CIMENTACION, COLUMNAS	11	ABR	2023
		REVISION	E	
		LAMINA	E.1	

UBICACION : QUITO
 PROPIETARIO :
 DISEÑO ESTRUCTURAL : ING. JOSE LUIS MESIAS
 COLABORACION :
 DIBUJO : J.L.M.
 ESCALAS : INDICADAS (1:75)

SENESECYT 1027-06-706426/EMOP 4923
JOSE LUIS MESIAS Firmado digitalmente por JOSE LUIS MESIAS PAZMINO
 Fecha: 2023.04.11 09:49:57 -05'00'
 PROPIETARIO : **JOSE LUIS MESIAS (01-17-6767)**

SELLOS MUNICIPALES

