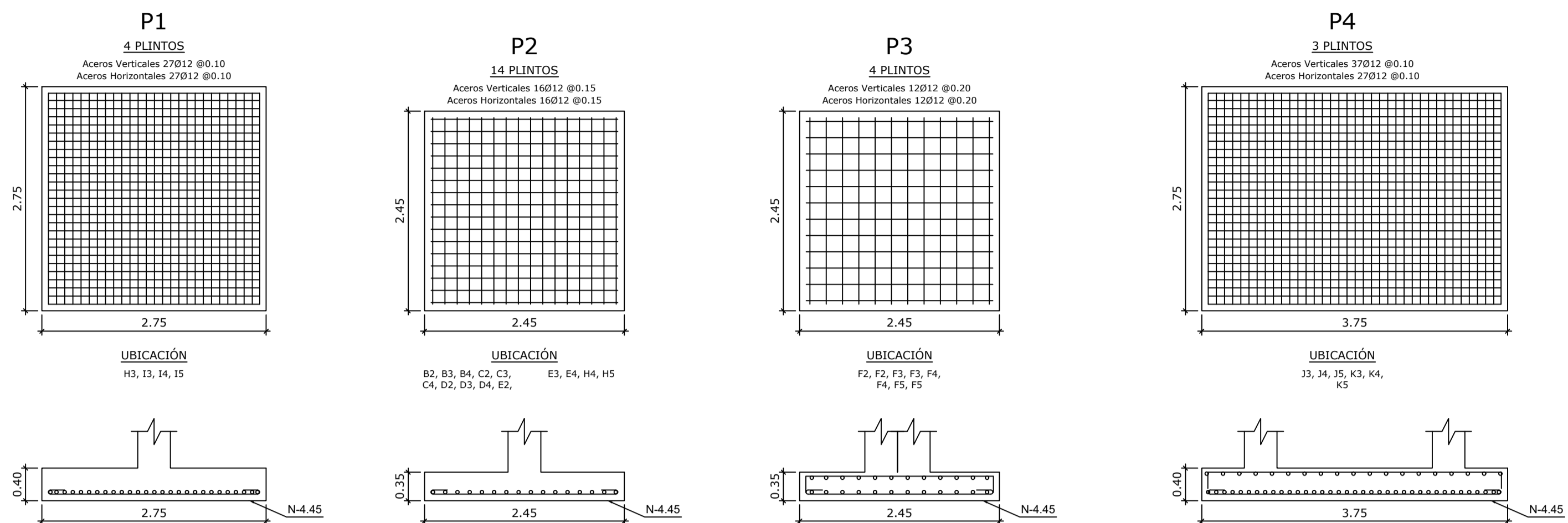
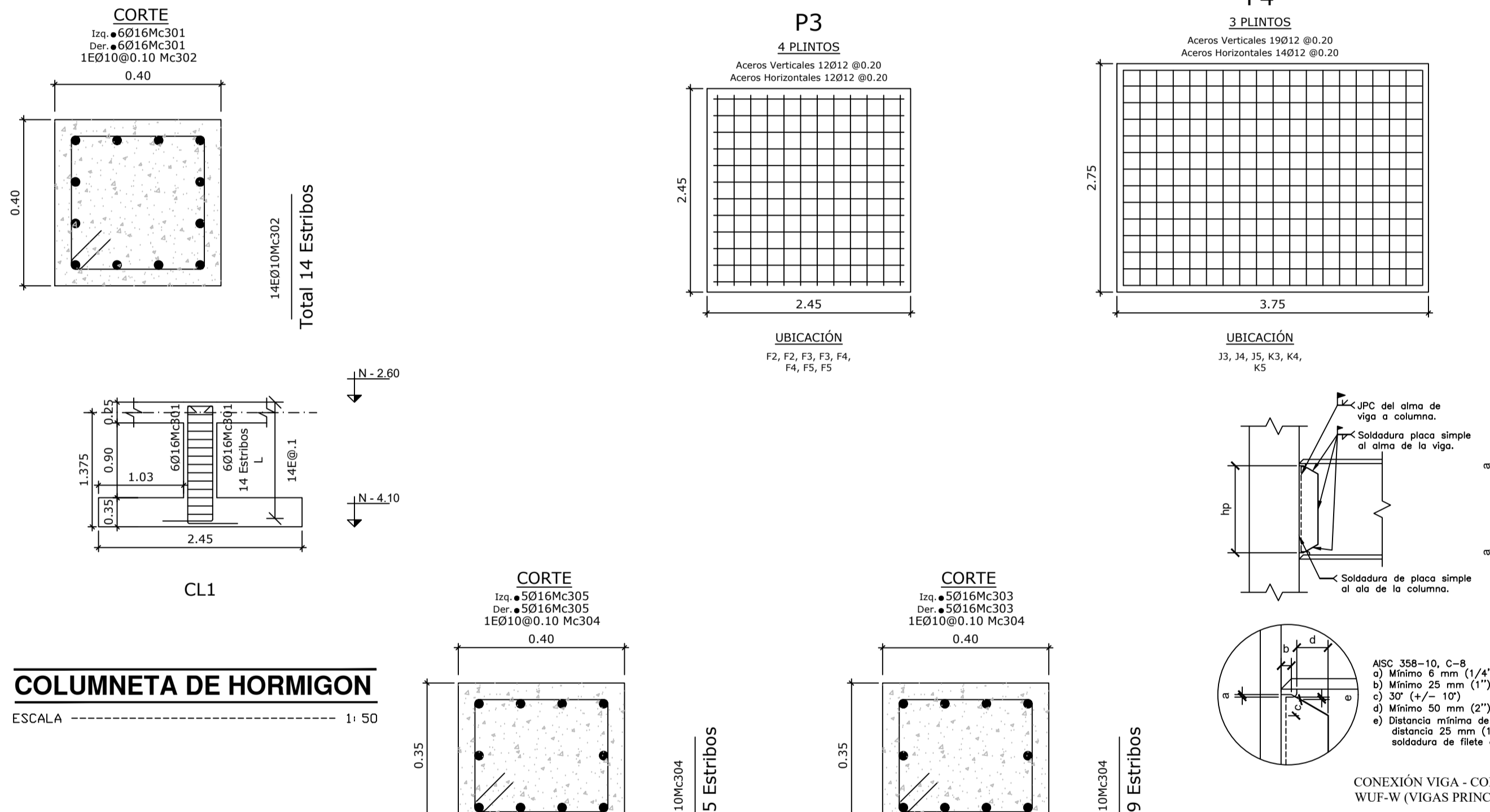


ARMADURA INFERIOR PLINTOS

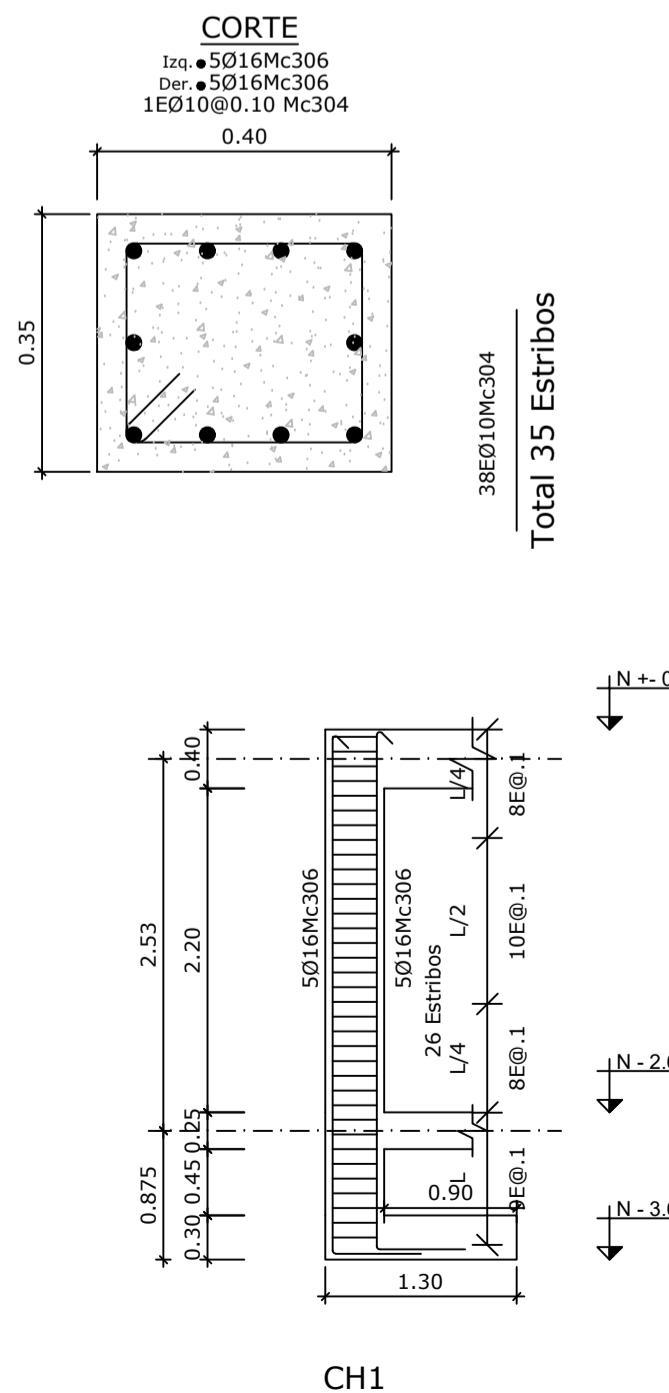


ARMADURA SUPERIOR PLINTOS



COLUMNETA DE HORMIGON

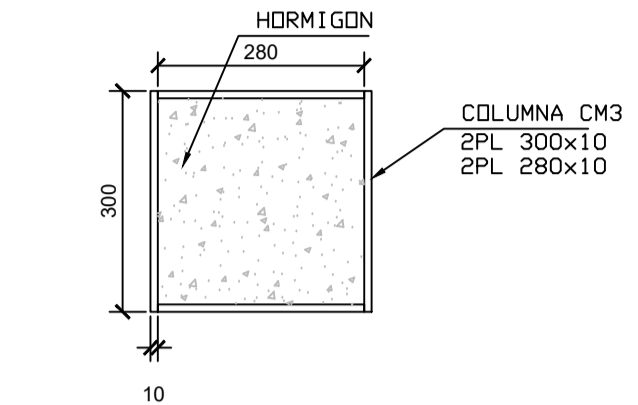
ESCALA 1:50



COLUMNAS DE HORMIGON

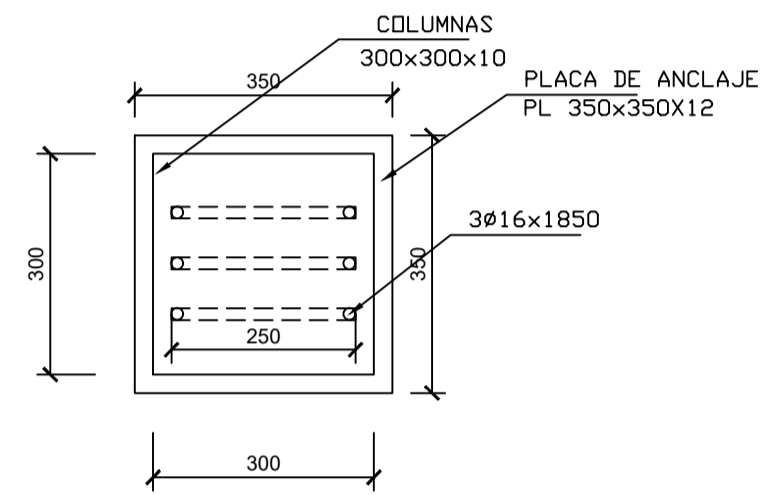
ESCALA 1:50

| TIPO | No. | DIMENSIONES | | | MARCAS ARMADURA | | NIVEL | UBICACION |
|------|-----|-------------|------|------|--------------------------------------|----------------------------|--------|---|
| | | A | B | H | ARMADURA INFERIOR | ARMADURA SUPERIOR | | |
| P1 | 4 | 2.75 | 2.75 | 0.40 | 27012Mc101 @0.10 27012Mc101 @0.10 | Verticales Horizontales | N-4.10 | H3, I3, I4, I5 |
| P2 | 14 | 2.45 | 2.45 | 0.35 | 16012Mc102 @0.15 16012Mc102 @0.15 | Verticales Horizontales | N-4.10 | B2, B3, B4, C2, C3, C4, D2, D3, D4, E2, E3, E4, H4, H5 |
| P3 | 4 | 2.45 | 2.45 | 0.35 | 12012Mc102 @0.20 12012Mc102 @0.20 | Verticales Horizontales | N-4.10 | F2, F2, F3, G3, F4, G4, F5, G5 |
| P4 | 3 | 3.75 | 2.75 | 0.40 | 37012Mc101 @0.10 27012Mc106 @0.10 | Verticales Horizontales | N-4.10 | J3, K3, M4, K4, J5, K5 |



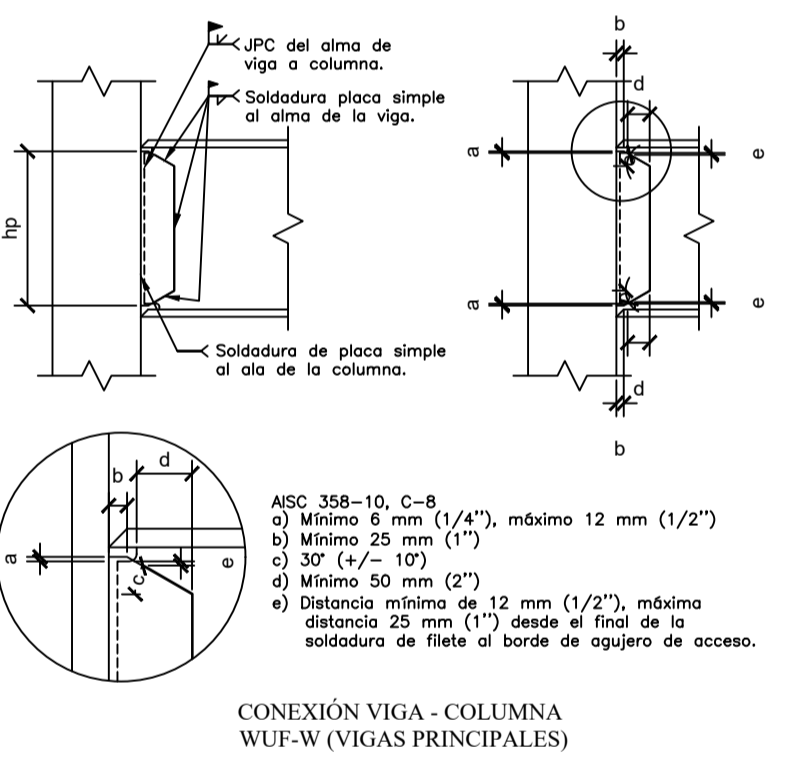
COLUMNAS METALICAS

ESCALA 1:10



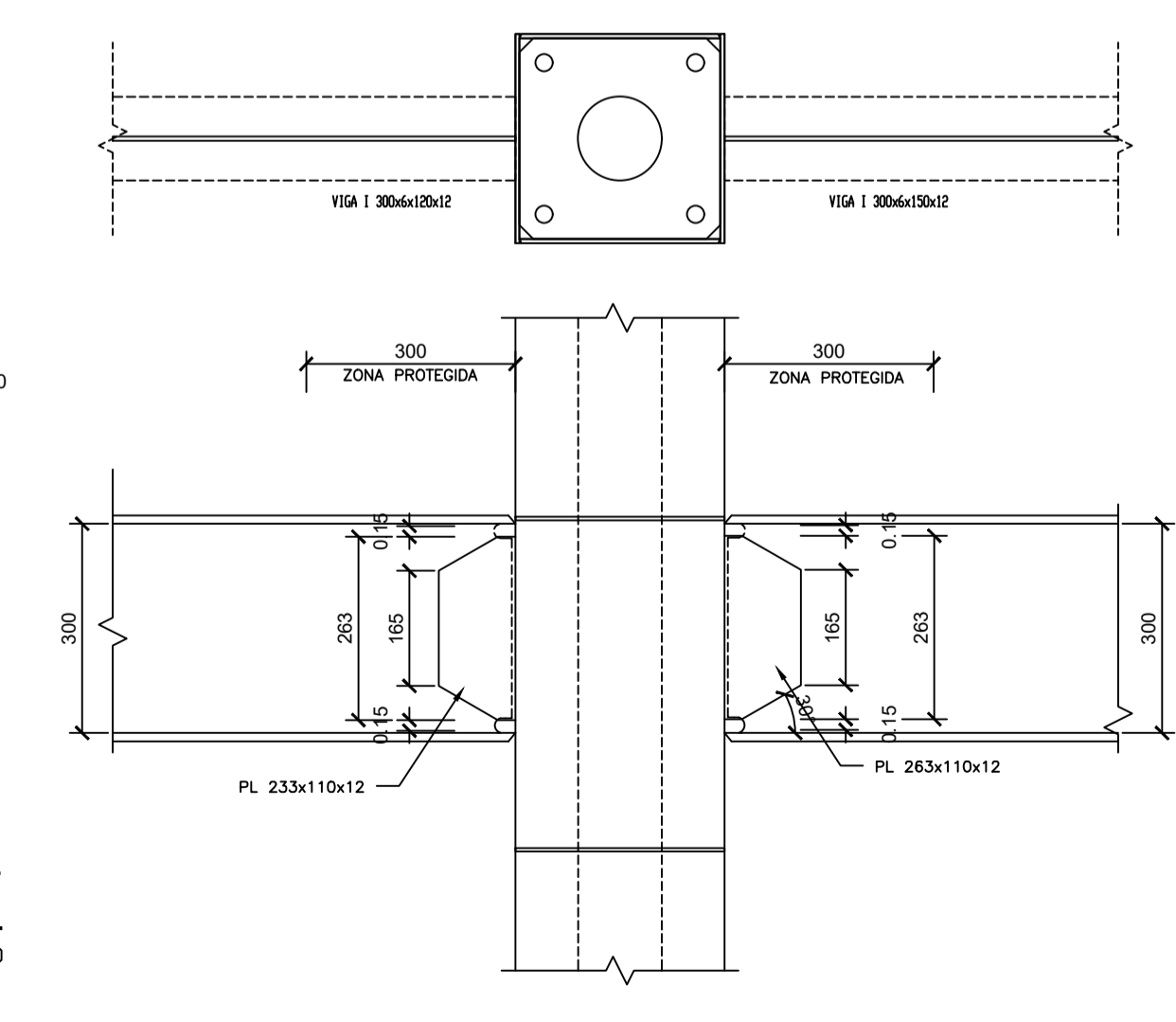
PLACAS DE ANCLAJE

ESCALA 1:10



CONEXION A MOMENTO (VIGA-COLUMNA)

ESC SE



DETALLES DE CONEXION

ESCALA 1:50

PLANILLA DE ACEROS

| Mc | TIPO | Ø | No. | DIMENSIONES | | | | | Long. Desar. (m) | Long. Total | Peso Kg | Obsv. |
|--|-------|-------|-------|-------------|-------|-------|-------|-------|------------------|-------------|---------|--------|
| | | | | a | b | c | d | g | | | | |
| MARCAS 100 300 | | | | | | | | | | | | |
| 101 | I | 12 | 327 | 2.60 | - | - | - | 0.20 | 3 | 981 | 871.1 | - |
| 102 | I | 12 | 544 | 2.30 | - | - | - | 0.20 | 2.70 | 1468.8 | 1304.3 | - |
| 103 | C | 12 | 96 | 2.30 | 0.25 | - | - | - | 2.80 | 268.8 | 238.7 | - |
| 104 | C | 12 | 57 | 2.60 | 0.30 | - | - | - | 3.20 | 182.4 | 162.0 | - |
| 105 | C | 12 | 42 | 3.90 | 0.30 | - | - | - | 4.50 | 189 | 167.8 | - |
| 106 | I | 12 | 81 | 3.90 | - | - | - | 0.20 | 4.30 | 348.3 | 309.3 | - |
| 107 | L | 12 | 10 | 7.05 | 0.15 | - | - | - | 7.20 | 72 | 63.9 | - |
| 108 | J | 12 | 10 | 7.05 | - | - | - | 0.20 | 7.25 | 72.5 | 64.1 | - |
| 109 | II | 12 | 24 | 10.40 | - | - | - | - | 10.40 | 249.6 | 221.6 | - |
| 110 | L | 12 | 8 | 2.90 | 0.15 | - | - | - | 3.05 | 24.4 | 21.7 | - |
| 111 | J | 12 | 8 | 2.90 | - | - | - | 0.20 | 3.10 | 24.8 | 22.0 | - |
| 112 | O | 10 | 2688 | 0.17 | 0.17 | - | - | - | 0.10 | 0.88 | 2365.44 | 1459.5 |
| 113 | L | 12 | 2 | 11.85 | 0.15 | - | - | - | 12 | 24 | 21.3 | - |
| 114 | J | 12 | 2 | 11.80 | - | - | - | 0.20 | 12 | 24 | 21.3 | - |
| 115 | II | 12 | 4 | 10.55 | - | - | - | - | 10.55 | 42.2 | 37.5 | - |
| 116 | L | 12 | 2 | 8.20 | 0.15 | - | - | - | 8.35 | 16.7 | 14.8 | - |
| 117 | J | 12 | 2 | 8.20 | - | - | - | 0.20 | 8.40 | 16.8 | 14.9 | - |
| 118 | L | 12 | 8 | 7.85 | 0.15 | - | - | - | 8 | 64 | 56.8 | - |
| 119 | J | 12 | 8 | 7.85 | - | - | - | 0.20 | 8.05 | 64.4 | 57.2 | - |
| 120 | II | 12 | 16 | 10.50 | - | - | - | - | 10.50 | 168 | 149.2 | - |
| 121 | L | 12 | 8 | 3.05 | 0.15 | - | - | - | 3.20 | 25.6 | 22.7 | - |
| 122 | J | 12 | 8 | 3.05 | - | - | - | 0.20 | 3.25 | 26 | 23.1 | - |
| 123 | L | 12 | 2 | 7.95 | 0.15 | - | - | - | 8.10 | 16.2 | 14.4 | - |
| 124 | J | 12 | 2 | 7.95 | - | - | - | 0.20 | 8.15 | 16.3 | 14.5 | - |
| 125 | C | 12 | 8 | 5.40 | 0.15 | - | - | - | 5.70 | 45.6 | 40.5 | - |
| 126 | I | 12 | 8 | 5.40 | - | - | - | 0.20 | 5.80 | 46.4 | 41.2 | - |
| 127 | C | 12 | 8 | 4.70 | 0.15 | - | - | - | 5 | 40 | 35.5 | - |
| 128 | I | 12 | 8 | 4.70 | - | - | - | 0.20 | 5.10 | 40.8 | 36.2 | - |
| 129 | L | 12 | 7 | 10.40 | 0.15 | - | - | - | 10.55 | 21.1 | 18.7 | - |
| 130 | J | 12 | 2 | 10.40 | - | - | - | 0.20 | 10.60 | 21.2 | 18.8 | - |
| 131 | II | 12 | 4 | 10.60 | - | - | - | - | 10.60 | 42.4 | 37.7 | - |
| 132 | II | 12 | 4 | 10.90 | - | - | - | - | 10.90 | 43.6 | 38.7 | - |
| 133 | L | 12 | 4 | 9.50 | - | - | - | - | 9.50 | 38 | 33.7 | - |
| 134 | L | 12 | 2 | 4.15 | 0.15 | - | - | - | 4.30 | 8.6 | 7.6 | - |
| 135 | J | 12 | 2 | 4.15 | - | - | - | 0.20 | 4.35 | 8.7 | 7.7 | - |
| 136 | L | 12 | 8 | 8.00 | 0.15 | - | - | - | 8.15 | 65.2 | 57.9 | - |
| 137 | J | 12 | 8 | 8.00 | - | - | - | 0.20 | 8.20 | 65.6 | 58.3 | - |
| 138 | L | 12 | 4 | 7.10 | 0.15 | - | - | - | 7.25 | 29 | 25.8 | - |
| 139 | J | 12 | 4 | 7.10 | - | - | - | 0.20 | 7.30 | 29.2 | 25.9 | - |
| 140 | II | 12 | 16 | 10.70 | - | - | - | - | 10.70 | 171.2 | 152.0 | - |
| 141 | I | 12 | 2 | 5.15 | - | - | - | 0.20 | 5.35 | 11.1 | 9.9 | - |
| 142 | C | 12 | 2 | 5.15 | 0.15 | - | - | - | 5.45 | 10.9 | 9.7 | - |
| MARCAS 300 | | | | | | | | | | | | |
| 301 | G | 16 | 384 | 1.50 | 0.60 | 0.15 | - | - | 2.25 | 864 | 1363.4 | - |
| 302 | O | 10 | 448 | 0.32 | 0.32 | - | - | - | 0.11 | 1.50 | 672 | 414.6 |
| 303 | G | 16 | 10 | 3.90 | 0.60 | 0.15 | - | - | 4.65 | 46.5 | 73.4 | - |
| 304 | O | 10 | 1341 | 0.27 | 0.32 | - | - | - | 0.11 | 1.40 | 1872.4 | 1158.4 |
| 305 | G | 16 | 130 | 6.85 | 0.60 | 0.15 | - | - | 7.60 | 98 | 1559.1 | - |
| 306 | G | 16 | 110 | 3.85 | 0.60 | 0.15 | - | - | 4.60 | 506 | 798.5 | - |
| RESUMEN DE MATERIALES | | | | | | | | | | | | |
| Ø | 8 | 10 | 12 | 14 | 16 | 18 | 20 | 22 | 25 | 28 | 32 | |
| W (Kg/m) | 0.395 | 0.617 | 0.888 | 1.208 | 1.578 | 1.998 | 2.466 | 2.984 | 3.853 | 4.834 | 6.313 | |
| L (m) | - | 4915 | 5124 | - | 2405 | - | - | - | - | - | - | - |
| PESO (Kg) | - | 3032 | 4550 | - | 3794 | - | - | - | - | - | - | - |
| Wtot (Kg) | - | - | - | - | - | - | - | - | - | - | - | - |
| HORMIGON f'c = 210 Kg/cm2 | | | | | | | | | | | | |
| ACERO fy = 4200 Kg/cm2 | | | | | | | | | | | | |
| CONTRAPISO (m3) = 149.83 | | | | | | | | | | | | |
| MALLA ELECTROSOLDADA 1Ø4@20cm = 154 und. | | | | | | | | | | | | |
| REPLANTILLO (m3) = 23.95 | | | | | | | | | | | | |
| PLINTOS (m3) = 63.28 | | | | | | | | | | | | |
| CADENAS (m3) = 22.28 | | | | | | | | | | | | |
| COLUMNAS (m3) = 16.69 | | | | | | | | | | | | |
| COLUMNETAS (m3) = 5.88 | | | | | | | | | | | | |

| TIPOS DE HIERROS: | ESPECIFICACIONES TECNICAS: |
|-------------------|---|
| | HORMIGON f'c = 210 Kg/cm2 HIERRO fy = 4200 Kg/cm2 EN FORMA DE VARILLA MILMETRADA CORRUGADA TRASLAPES MINIMOS = 50 DIAMETROS DE LA VARILLA ACERO ESTRUCTURAL ASTM A36 SOLDADURA EN TALLER MIG ER70S - 6 SOLDADURA EN CAMPO E7018 ESFUERZO ADMISIBLE DEL SUELO 10 T/m2. CODIGO DE DISEÑO NEC-SE-2015 |

PROYECTO ESTRUCTURAL

POLMIR PLAZA

CONTIENE:
ARMADURA PLINTOS
DETALLE COLUMNETA
DETALLES COLUMNAS HOR.
PLACAS DE ANCLAJE
CUADRO DE PLINTOS

CLAVE CATASTRAL: 10415-03-001 NÚMERO DE PREDIO: 115519

ESCALAS INDICADAS: 2021/12/19

DISEÑADO POR: **ING. JOSE D. POVEDA H.**
No. REG. SENESCYT: 1027-13-1188807 CL: 1716756279

PROPIETARIO: **SR. FERNANDO ROMMEL POLO ELMIR**
C.I.: 082155442

DIBUJO: JAIME I. PATIÑO M. PLANO No: **E 2/8**

TORREFUERTE
Ingeniería Estructural
PASADAJE PRAGA 53-16 Y AV. INTEROCENANICA TEL: 2040-280
CUMBAYA - ECUADOR