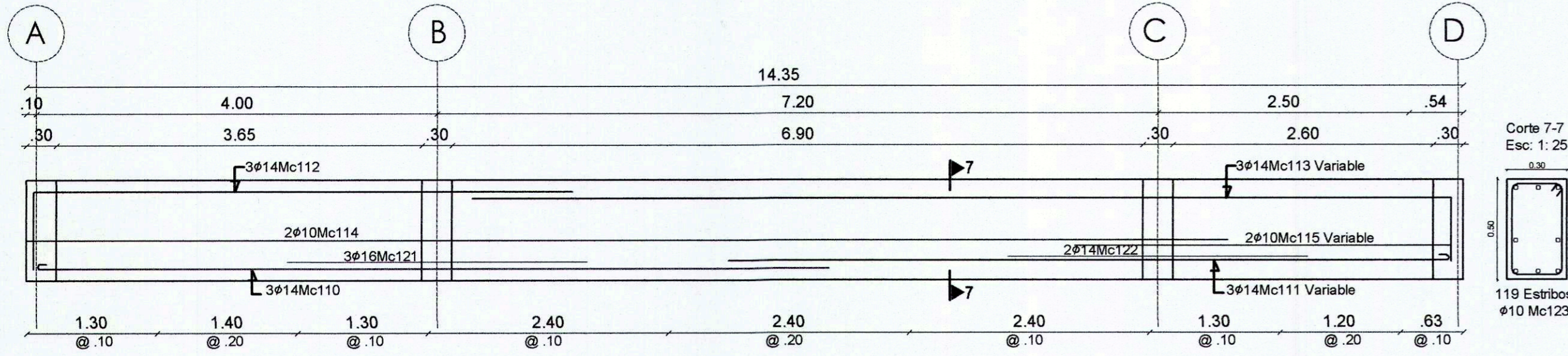
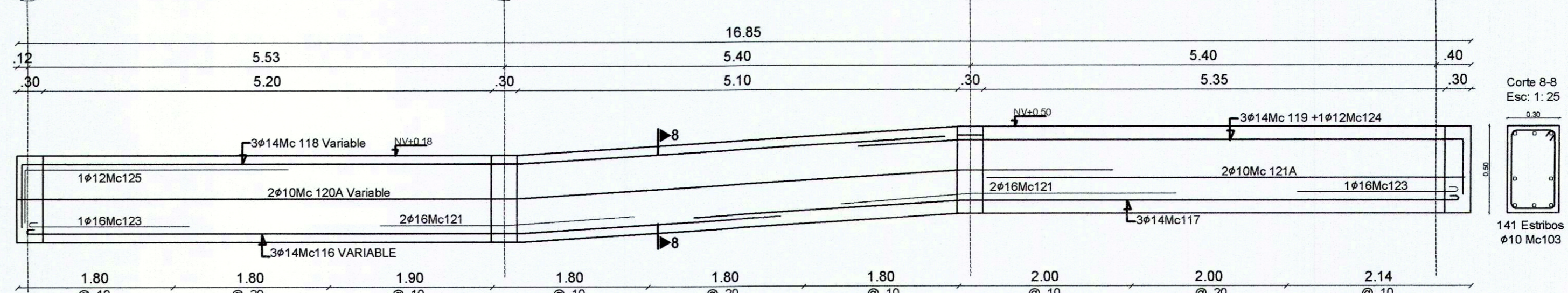


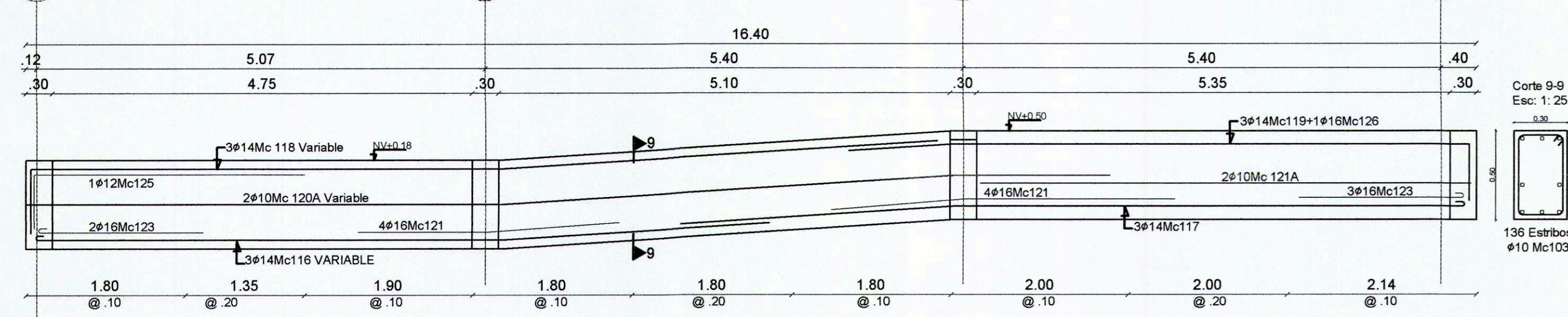
Viga CIM 105 Nv+0.50  
Esc: V1: 25 - H:1.50



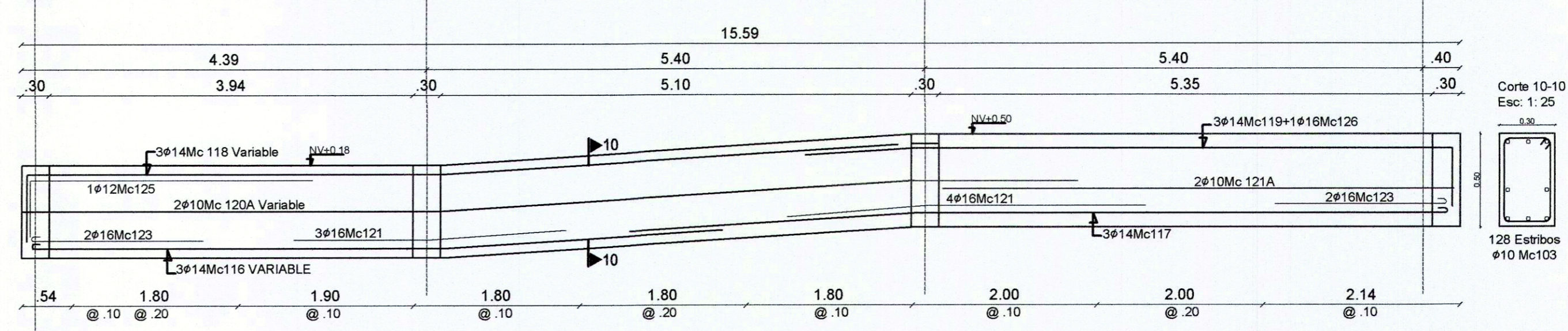
Viga CIM 106  
Esc: V1: 25 - H:1.50



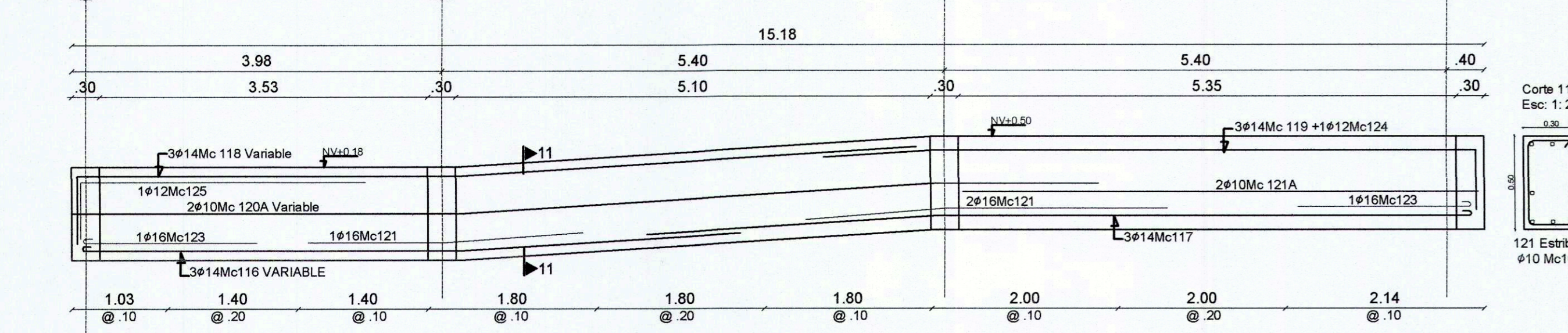
Viga CIM 107  
Esc: V1: 25 - H:1.50



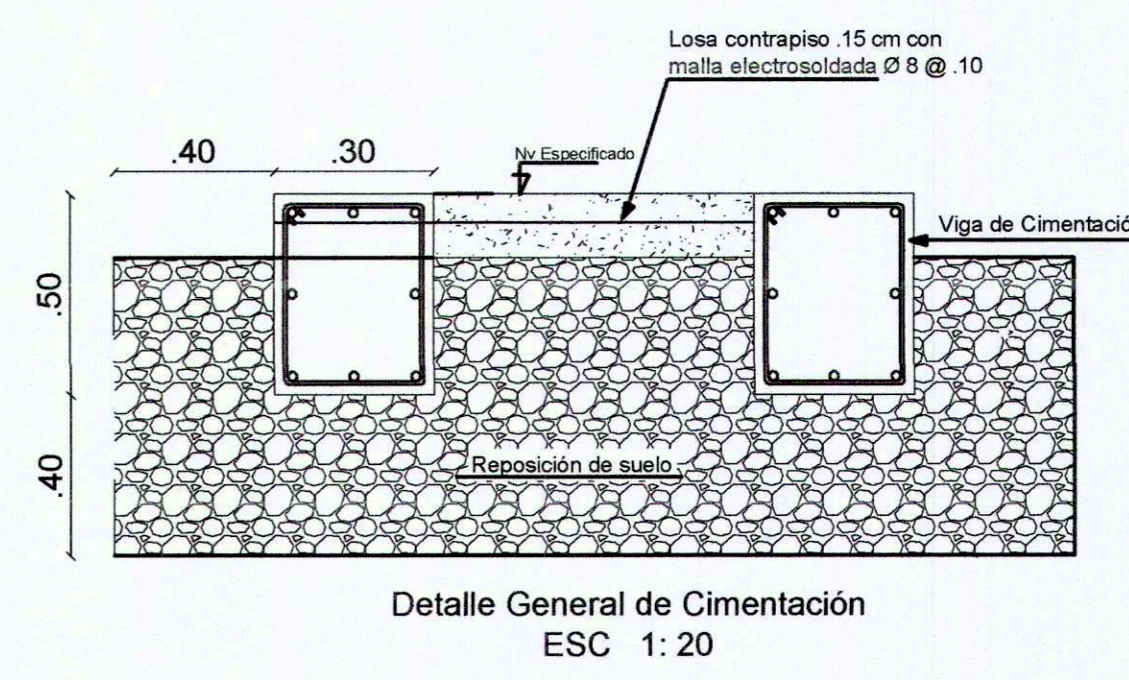
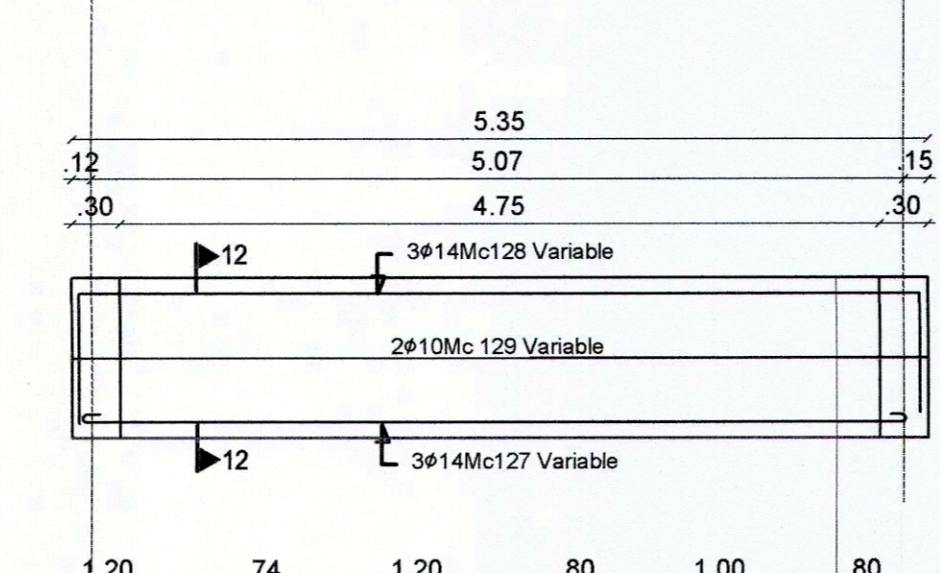
Viga CIM 108  
Esc: V1: 25 - H:1.50



Viga CIM 109  
Esc: V1: 25 - H:1.50



Viga CIM 110 (2 UNIDADES)  
Esc: V1: 25 - H:1.50



PLANILLA DE HIERROS													
MC	DIAM	TIPO	No	a	b	c	d	e	h	LONGITUD CORTE	LONGITUD TOTAL	PESO	OBSERVACIONES
VIGAS DE CIMENTACION													
105	14	Ø	3	5.34	0.32	0.32				5.34	17.32	20.73	
105	12	Ø	3	5.36	0.48	0.48				5.36	16.52	19.88	
105	12	Ø	10	0.90	0.94	0.94				0.90	17.82	19.64	
105	12	Ø	3	4.41	0.32	0.32				4.41	17.72	21.77	
105	12	Ø	3	4.42	0.48	0.48				4.42	16.52	19.71	
105	12	Ø	2	4.42	0.32	0.32				4.42	15.68	18.73	
105	12	Ø	2	4.42	0.48	0.48				4.42	14.84	17.52	
105	12	Ø	2	4.42	0.32	0.32				4.42	13.99	16.51	
105	12	Ø	2	4.42	0.48	0.48				4.42	13.15	15.29	
105	12	Ø	2	4.42	0.32	0.32				4.42	12.30	14.06	
105	12	Ø	2	4.42	0.48	0.48				4.42	11.46	12.84	
105	12	Ø	2	4.42	0.32	0.32				4.42	10.61	11.61	
105	12	Ø	2	4.42	0.48	0.48				4.42	9.77	10.39	
105	12	Ø	2	4.42	0.32	0.32				4.42	8.92	9.16	
105	12	Ø	2	4.42	0.48	0.48				4.42	8.08	7.92	
105	12	Ø	2	4.42	0.32	0.32				4.42	7.23	6.69	
105	12	Ø	2	4.42	0.48	0.48				4.42	6.39	5.64	
105	12	Ø	2	4.42	0.32	0.32				4.42	5.54	4.50	
105	12	Ø	2	4.42	0.48	0.48				4.42	4.70	3.36	
105	12	Ø	2	4.42	0.32	0.32				4.42	3.85	2.11	
105	12	Ø	2	4.42	0.48	0.48				4.42	3.01	0.86	
105	12	Ø	2	4.42	0.32	0.32				4.42	2.16	-0.18	
105	12	Ø	2	4.42	0.48	0.48				4.42	1.32	-0.96	
105	12	Ø	2	4.42	0.32	0.32				4.42	0.47	-1.71	
105	12	Ø	2	4.42	0.48	0.48				4.42	-0.38	-2.46	
105	12	Ø	2	4.42	0.32	0.32				4.42	-1.23	-3.21	
105	12	Ø	2	4.42	0.48	0.48				4.42	-2.08	-3.96	
105	12	Ø	2	4.42	0.32	0.32				4.42	-2.93	-4.71	
105	12	Ø	2	4.42	0.48	0.48				4.42	-3.78	-5.46	
105	12	Ø	2	4.42	0.32	0.32				4.42	-4.63	-6.21	
105	12	Ø	2	4.42	0.48	0.48				4.42	-5.48	-6.96	
105	12	Ø	2	4.42	0.32	0.32				4.42	-6.33	-7.71	
105	12	Ø	2	4.42	0.48	0.48				4.42	-7.18	-8.46	
105	12	Ø	2	4.42	0.32	0.32				4.42	-8.03	-9.21	
105	12	Ø	2	4.42	0.48	0.48				4.42	-8.88	-9.96	
105	12	Ø	2	4.42	0.32	0.32				4.42	-9.73	-10.71	
105	12	Ø	2	4.42	0.48	0.48				4.42	-10.58	-11.46	
105	12	Ø	2	4.42	0.32	0.32				4.42	-11.43	-12.21	
105	12	Ø	2	4.42	0.48	0.48				4.42	-12.28	-12.96	
105	12	Ø	2	4.42	0.32	0.32				4.42	-13.13	-13.71	
105	12	Ø	2	4.42	0.48	0.48				4.42	-13.98	-14.46	
105	12	Ø	2	4.42	0.32	0.32				4.42	-14.83	-15.21	
105	12	Ø	2	4.42	0.48	0.48				4.42	-15.68	-15.96	
105	12	Ø	2	4.42	0.32	0.32				4.42	-16.53	-16.71	
105	12	Ø	2	4.42	0.48	0.48				4.42	-17.38	-17.46	
105	12	Ø	2	4.42	0.32	0.32				4.42	-18.23	-18.21	
105	12	Ø	2	4.42	0.48	0.48				4.42	-19.08	-19.16	
105	12	Ø	2	4.42	0.32	0.32				4.42	-19.93	-19.91	
105	12	Ø	2	4.42	0.48	0.48				4.42	-20.78	-20.84	
105	12	Ø	2	4.42	0.32	0.32				4.42	-21.63	-21.71	
105	12	Ø	2	4.42	0.48	0.48				4.42	-22.48	-22.56	
105	12	Ø	2	4.42	0.32	0.32				4.42	-23.33	-23.41	
105	12	Ø	2	4.42	0.48	0.48				4.42	-24.18	-24.24	
105	12	Ø	2	4.42	0.32	0.32				4.42	-25.03	-25.11	
105	12	Ø	2	4.42	0.48	0.48				4.42	-25.88	-25.94	
105	12	Ø	2	4.42	0.32	0.32				4.42	-26.73	-26.81	
105	12	Ø	2	4.42	0.48	0.48				4.42	-27.58	-27.64	
105	12	Ø	2	4.42	0.32	0.32				4.42	-28.43	-28.51	
105	12	Ø	2	4.42	0.48	0.48				4.42	-29.28	-29.34	
105	12	Ø	2	4.42	0.32	0.32				4.42	-30.13	-30.21	
105	12	Ø	2	4.42	0.48	0.48				4.42	-30.98	-31.04	
105	12	Ø	2	4.42	0.32	0.32				4.42	-31.83	-31.91	
105	12	Ø	2	4.42	0.48	0.48				4.42	-32.68	-32.74	
105	12	Ø	2	4.42	0.32	0.32				4.42	-33.53	-33.61	
105	12	Ø	2	4.42	0.48	0.48				4.42	-34.38	-34.44	
105	12	Ø	2	4.42	0.32	0.32				4.42	-35.23	-35.31	
105	12	Ø	2	4.42	0.48	0.48				4.42	-36.08	-36.14	
105	12	Ø	2	4.42	0.32	0.32				4.42	-36.93	-37.01	
105	12	Ø	2	4.42	0.48	0.48				4.42	-37.78	-37.84	
105	12	Ø	2	4.42	0.32	0.32				4.42	-38.63	-38.71	
105	12	Ø	2	4.42	0.48	0.48				4.42	-39.48	-39.54	
105	12	Ø	2	4.42	0.32	0.32				4.42	-40.33	-40.41	
105	12	Ø	2	4.42	0.48	0.48				4.42	-41.18	-41.24	
105	12	Ø	2	4.42	0.32	0.32				4.42	-42.03	-42.11	
105	12	Ø	2	4.42	0.48	0.48				4.42	-42.88	-42.94	
105	12	Ø	2	4.42	0.32	0.32				4.42	-43.73	-43.81	
105	12	Ø	2	4.42	0.48	0.48				4.42	-44.58	-44.64	
105	12	Ø	2	4.42	0.32	0.32				4.42	-45.43	-45.51	
105	12	Ø	2	4.42	0.48	0.48				4.42	-46.28	-46.34	
105	12	Ø	2	4.42	0.32	0.32				4.42	-47.13	-47.21	
105	12	Ø	2	4.42	0.48	0.48				4.42	-47.98	-48.04	
105	12	Ø	2	4.42	0.32	0.32				4.42	-48.83	-48.91	
105	12	Ø	2	4.42	0.48	0.48				4.42	-49.68	-49.74	
105	12	Ø	2	4.42	0.32	0.32				4.42	-50.53	-50.61	
105	12	Ø	2	4.42	0.48	0.48				4.42	-51.38	-51.44	
105	12	Ø	2	4.42	0.32	0.32				4.42	-52.23	-52.31	
105	12	Ø	2	4.42	0.48	0.48				4.42	-53.08	-53.14	
105	12	Ø	2	4.42	0.32	0.32				4.42	-53.93	-54.01	
105	12	Ø	2	4.42	0.48	0.48				4.42	-54.78	-54.84	
105	12	Ø	2	4.42	0.32	0.32				4.42	-55.63	-55.71	
105	12	Ø	2	4.42	0.48	0.48				4.42	-56.48	-56.54	
105	12	Ø	2	4.42	0.32	0.32				4.42	-57.33	-57.41	
105	12	Ø	2	4.42	0.48	0.48				4.42	-58.18	-58.24	
105	12	Ø	2	4.42	0.32	0.32				4.42	-59.03	-59.11	
105	12												