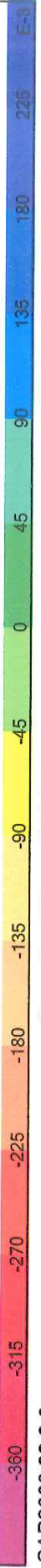
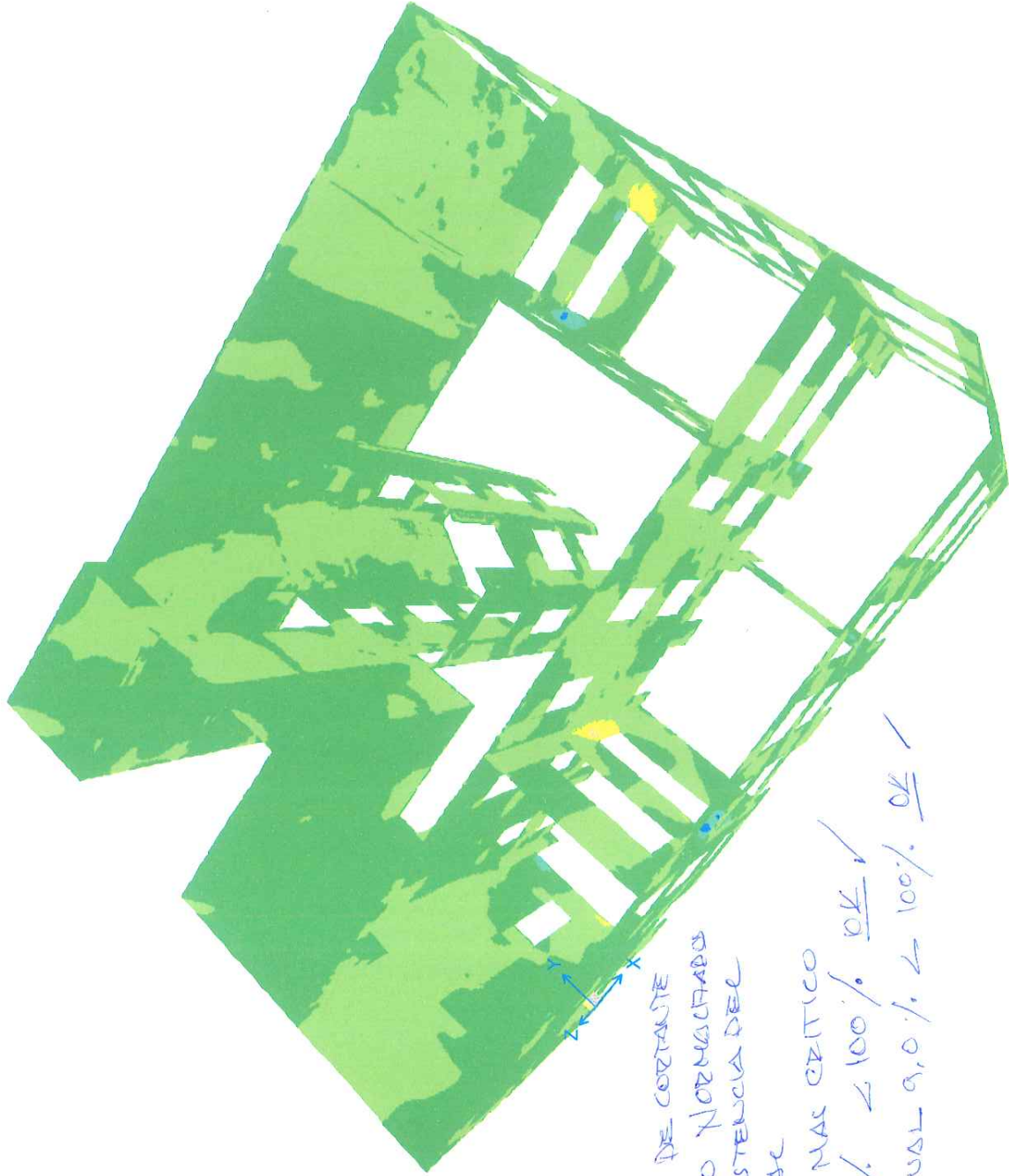
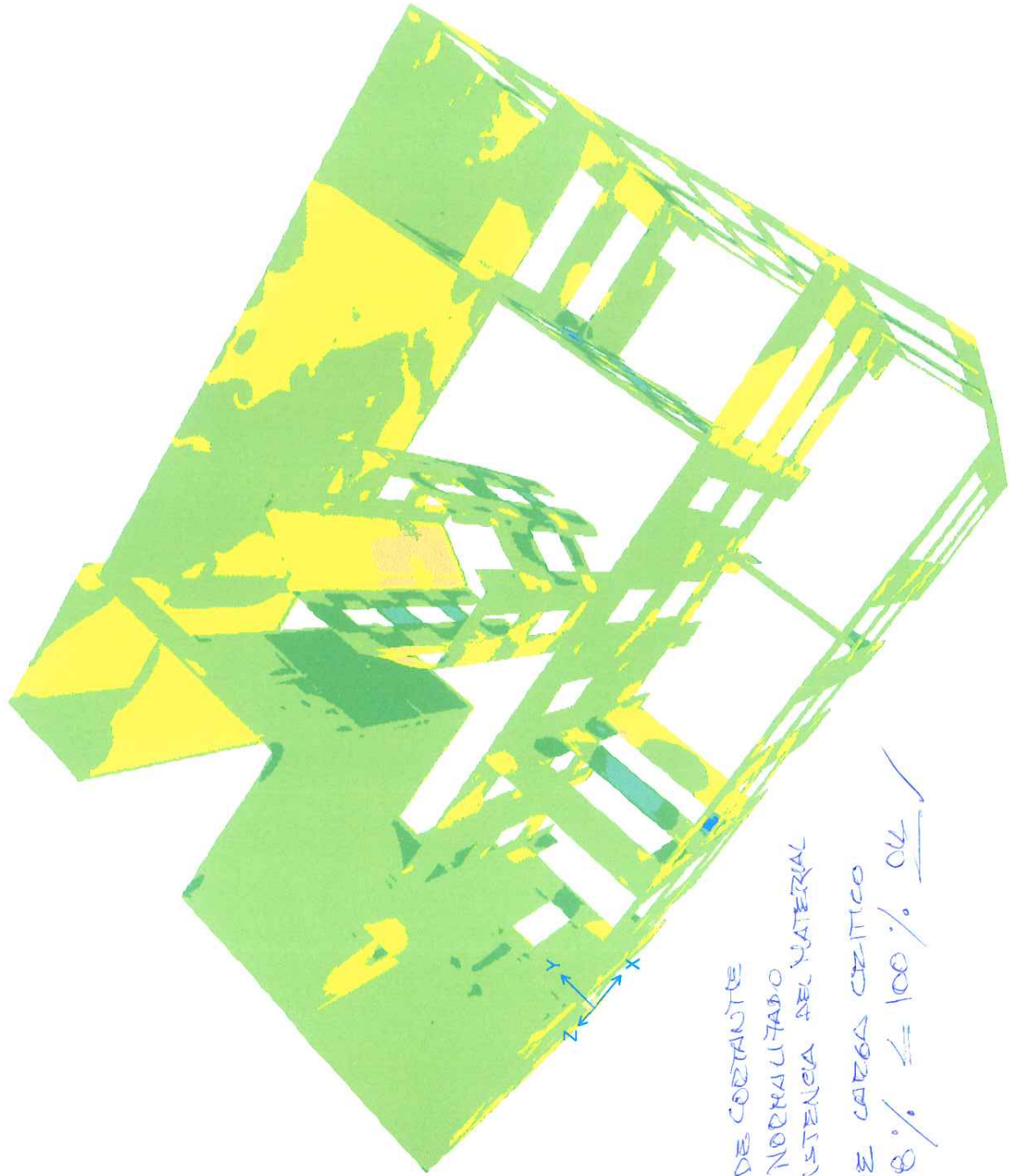




ESTADOS DE CORTANTE
COMBINADO NORMALIZADO
A LA RESISTENCIA DEL MATERIAL
ESTADO MAS CRITICO
45% < 100% OK





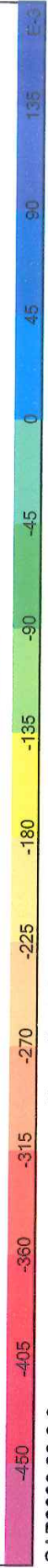
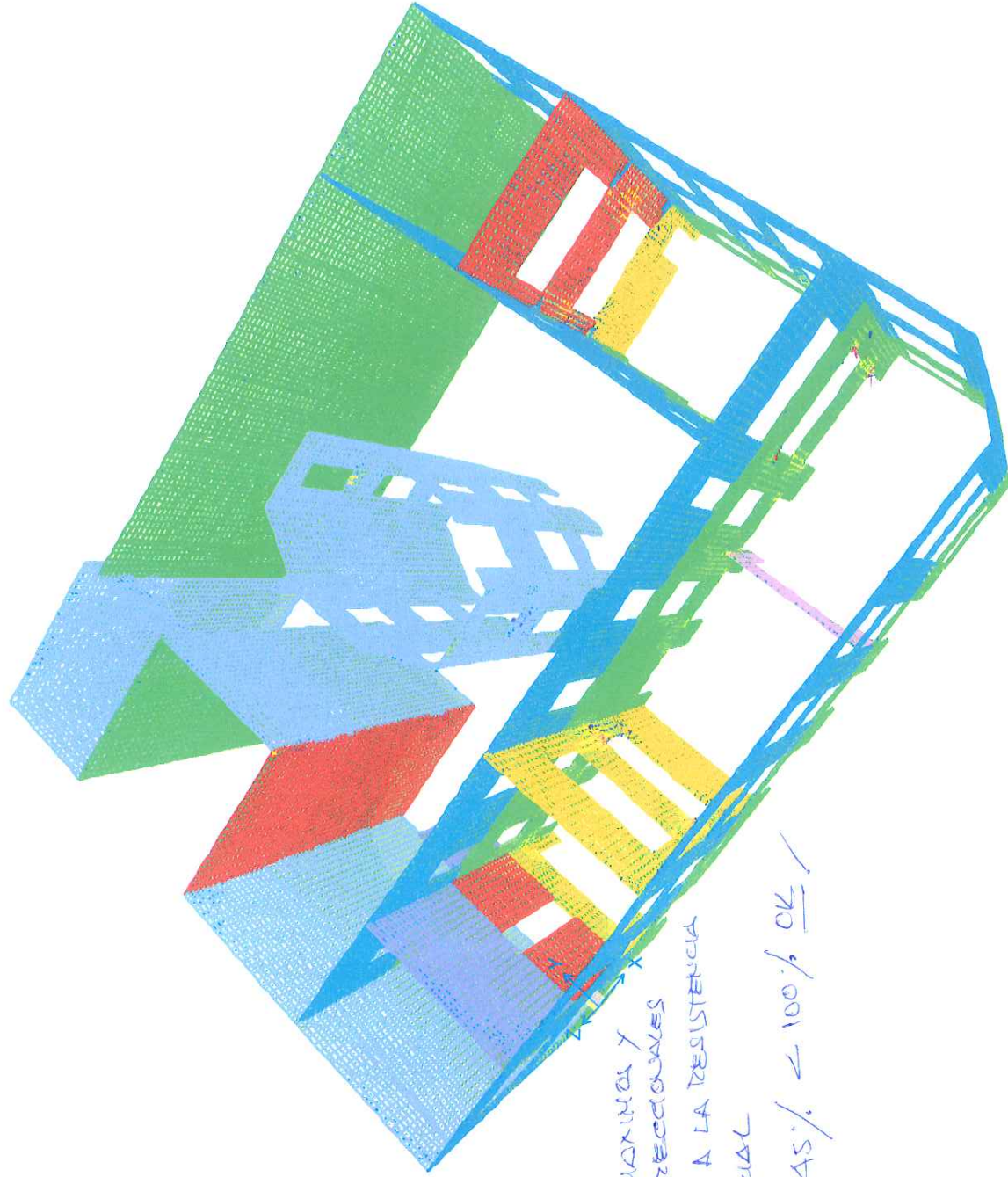


ESFUERZO DE CORTANTE
COMBINADO NORMALIZADO
Δ LA RESISTENCIA DEL MATERIAL

ESTADO DE CARGA CRÍTICO

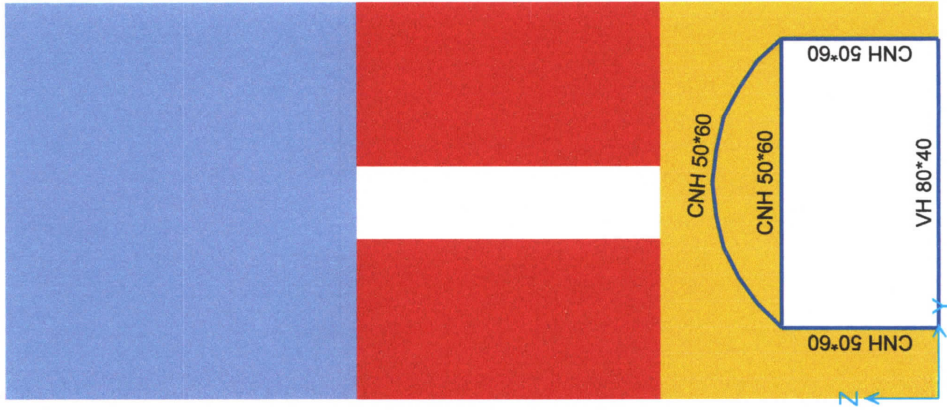
18% ≤ 100% OK ✓

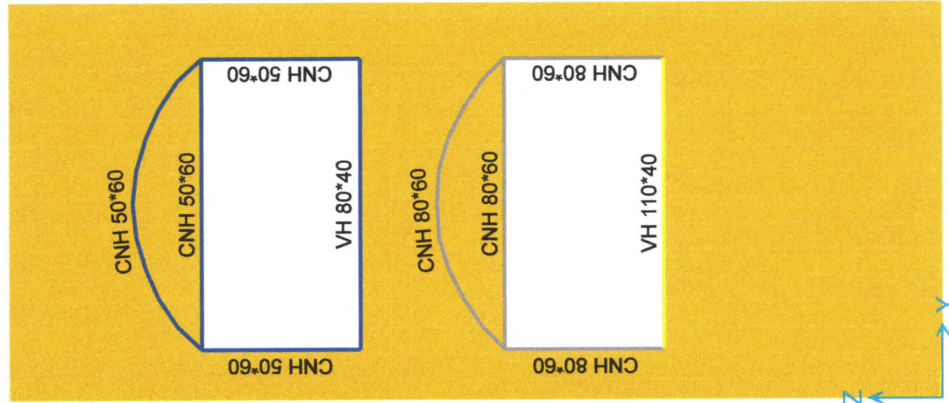
SAP2000 22.2.0 Normalized Stress S12 Diagram - Max (UDCON5) Tonf, m, C

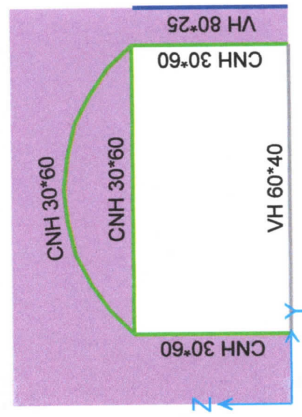
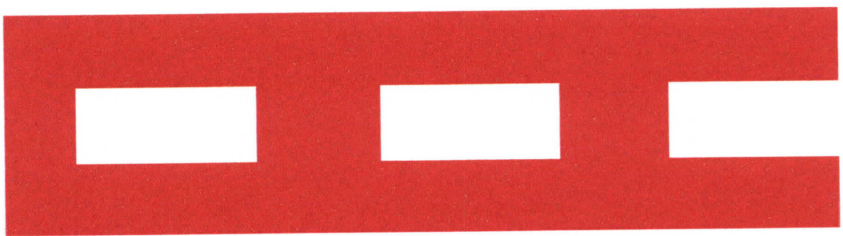


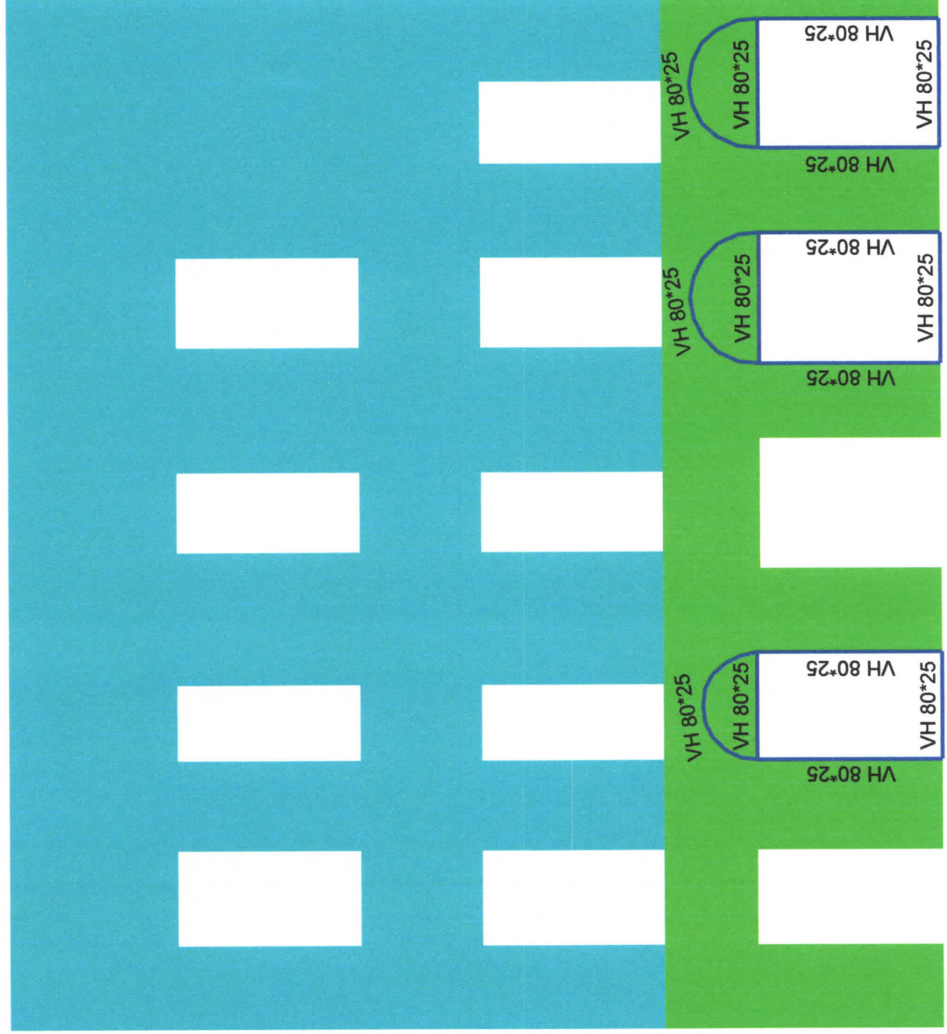
**PROYECTO
ECO MUSEO BIBLIOTECA
PROYECTO REPOTENCIADO**

REFUERZOS DE ARCOS DE HORMIGON









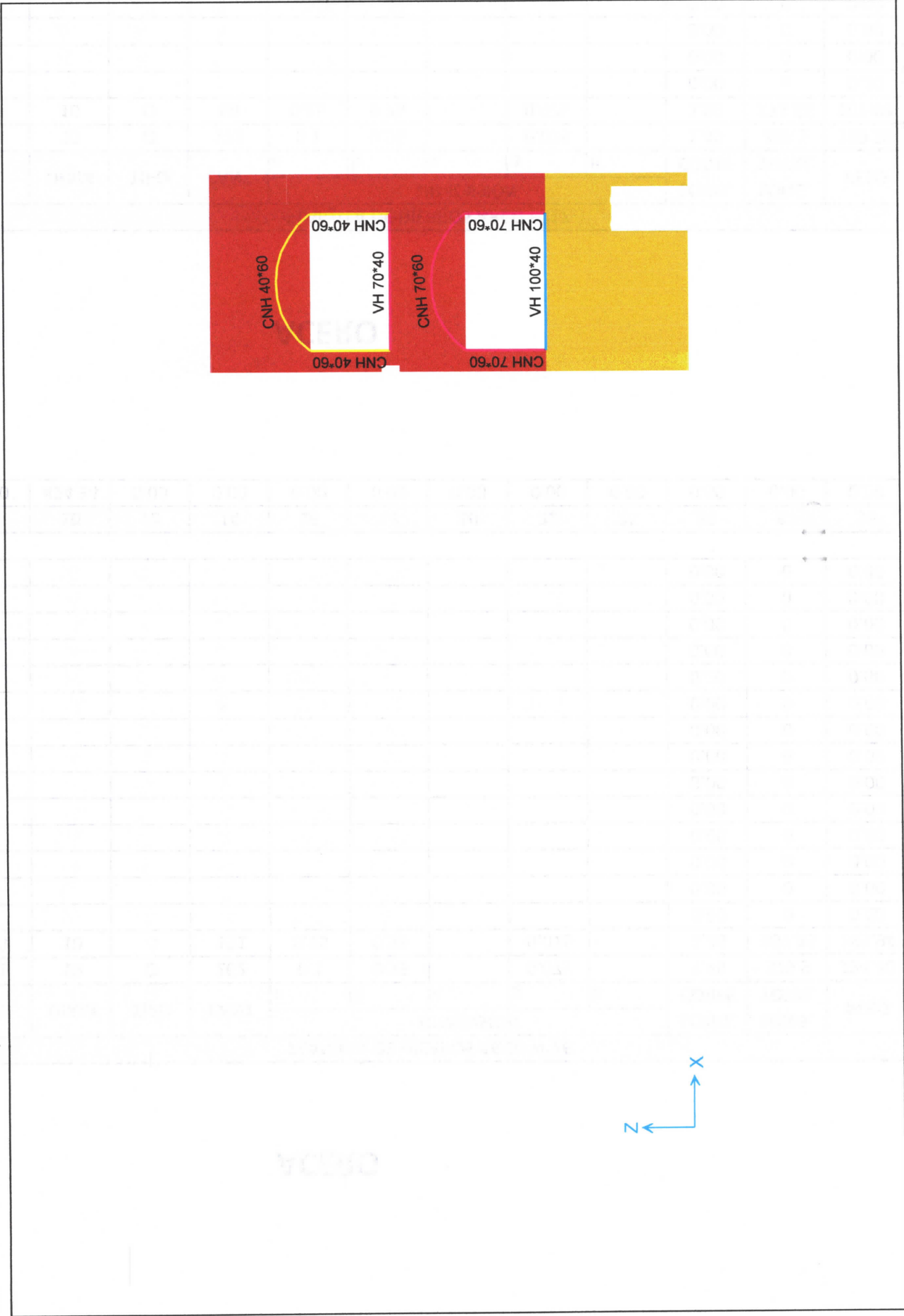


TABLE: Frame Section Properties 01 - General

SectionName	Material	Shape	I3	I2	Area	TorsConst	I33	I22	I23	A52	A53	S33	S22	Z33	Z22	R33	R22
Text	Text	Text	m	m	m ²	m ⁴	m ⁴	m ⁴	m ⁴	m ²	m ²	m ³	m ³	m ³	m ³	m	m
CNH 30*60	3000Psi	PC Conc U Girder	0.6	0.6	0.225	0.001665	0.007307	0.009788	0	0.164184	0.096748	0.021179	0.032625	0.035438	0.043875	0.180208	0.208567
CNH 40*60	3000Psi	PC Conc U Girder	0.6	0.7	0.24	0.001777	0.007791	0.01475	0	0.167138	0.107806	0.021868	0.042143	0.0375	0.0555	0.180169	0.247908
CNH 50*60	3000Psi	PC Conc U Girder	0.6	0.8	0.255	0.001892	0.008221	0.020913	0	0.169673	0.119992	0.02245	0.052281	0.039188	0.067875	0.17955	0.286374
CNH 60*60	3000Psi	PC Conc U Girder	0.6	0.9	0.27	0.002004	0.008606	0.02835	0	0.171895	0.132768	0.02295	0.063	0.0405	0.081	0.178596	0.324037
CNH 70*60	3000Psi	PC Conc U Girder	0.6	1.1	0.285	0.002117	0.008954	0.037138	0	0.17388	0.145884	0.023385	0.074275	0.041569	0.094875	0.177251	0.360981
CNH 80*60	3000Psi	PC Conc U Girder	0.6	1.1	0.3	0.00223	0.00927	0.04735	0	0.175679	0.159209	0.023769	0.086091	0.042545	0.1095	0.175784	0.397282
CNH 90*60	3000Psi	PC Conc U Girder	0.6	1.2	0.315	0.002342	0.009538	0.059063	0	0.177331	0.172667	0.024111	0.098438	0.043453	0.124875	0.174196	0.433013
VH 100*40	C240	Rectangular	0.4	1	0.4	0.015969	0.005333	0.033333	0	0.333333	0.333333	0.026667	0.066667	0.04	0.1	0.11547	0.288675
VH 30*40	C240	Rectangular	0.4	1.1	0.44	0.018099	0.005867	0.044367	0	0.366667	0.366667	0.029333	0.080667	0.044	0.121	0.11547	0.317543
VH 60*40	C240	Rectangular	0.4	0.3	0.12	0.001944	0.0016	0.0009	0	0.1	0.1	0.008	0.006	0.012	0.009	0.11547	0.086603
VH 70*40	C240	Rectangular	0.4	0.6	0.24	0.007512	0.0032	0.0072	0	0.2	0.2	0.016	0.024	0.028	0.036	0.11547	0.173205
VH 80*25	C240	Rectangular	0.4	0.7	0.28	0.009605	0.003733	0.011433	0	0.233333	0.233333	0.018667	0.032667	0.028	0.049	0.11547	0.202073
VH 80*40	C240	Rectangular	0.25	0.8	0.2	0.003347	0.001042	0.010667	0	0.166667	0.166667	0.008333	0.026667	0.0125	0.04	0.072169	0.23094
VH 80*50	C240	Rectangular	0.4	0.8	0.32	0.011719	0.004267	0.017067	0	0.266667	0.266667	0.021333	0.042667	0.032	0.064	0.11547	0.23094
			0.5	0.8	0.4	0.020375	0.008333	0.021333	0	0.333333	0.333333	0.033333	0.063333	0.05	0.08	0.144338	0.23094

TABLE: Frame Section Properties 01 - General

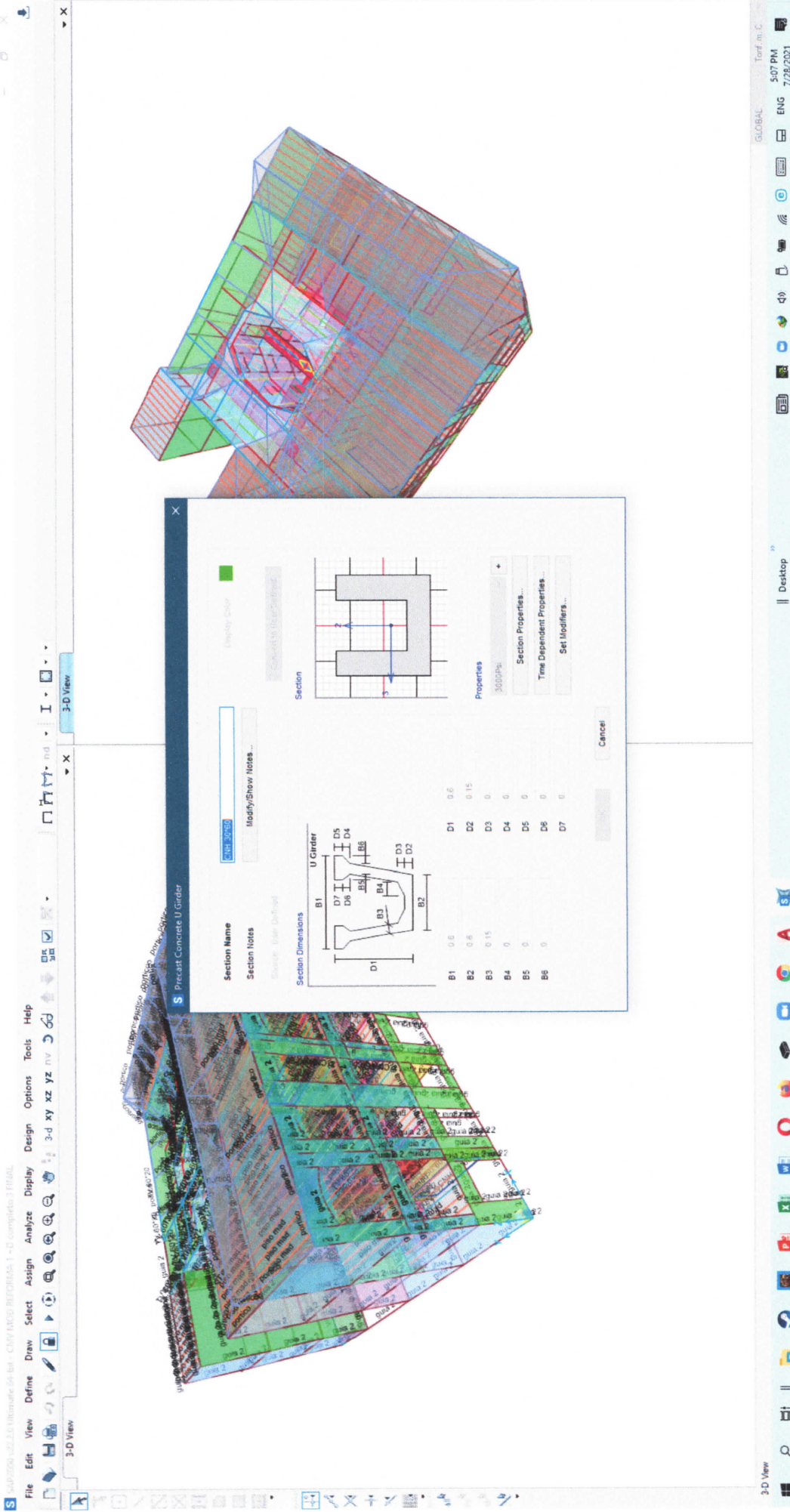
SectionName	ConcCol	ConcBeam	Color	TotalWt	TotalMass	FromFile	AMod	A2Mod	A3Mod	JMod	I2Mod	I3Mod	MMod	WMod
Text	Yes/No	Yes/No	Text	Tonf	Tonf-m ² /m	Yes/No	Unitless	Unitless	Unitless	Unitless	Unitless	Unitless	Unitless	Unitless
CNH 30*60	No	No	2337086	6.6627	0.68	No	1	1	1	0	0.5	0.5	1	1
CNH 40*60	No	No	Yellow	6.7577	0.69	No	1	1	1	0	0.5	0.5	1	1
CNH 50*60	No	No	Blue	22.3541	2.28	No	1	1	1	0	0.5	0.5	1	1
CNH 60*60	No	No	Cyan	0	0	No	1	1	1	0	0.5	0.5	1	1
CNH 70*60	No	No	Magenta	8.0248	0.82	No	1	1	1	0	0.5	0.5	1	1
CNH 80*60	No	No	GrayDark	25.8625	2.64	No	1	1	1	0	0.5	0.5	1	1
CNH 90*60	No	No	Green	0	0	No	1	1	1	0	0.5	0.5	1	1
VH 100*40	No	Yes	Cyan	3.3831	0.34	No	1	1	1	0	0.5	0.5	1	1
VH 30*40	No	Yes	Yellow	11.5292	1.18	No	1	1	1	0	0.5	0.5	1	1
VH 60*40	No	Yes	DarkCyan	50.4865	5.15	No	1	1	1	0	0.5	0.5	1	1
VH 70*40	No	Yes	GrayDark	2.1989	0.22	No	1	1	1	0	0.5	0.5	1	1
VH 80*25	No	Yes	Magenta	2.3682	0.24	No	1	1	1	0	0.5	0.5	1	1
VH 80*40	No	Yes	Blue	37.346	3.81	No	1	1	1	0	1	1	1	1
VH 80*50	No	Yes	Blue	8.6103	0.88	No	1	1	1	0	0.5	0.5	1	1
			Yellow	11.2477	1.15	No	1	1	1	0	0.5	0.5	1	1

TABLE: Frame Section Properties 03 - Concrete Beam

SectionName	RebarMatL	RebarMatC	TopCover	BotCover	TopLeftArea	BotLeftArea	TopRightArea	BotRightArea
Text	Text	Text	m	m	m ²	m ²	m ²	m ²
VH 100*40	A615Gr60	A615Gr60	0.04	0.04	0	0	0	0
VH 110*40	A615Gr60	A615Gr60	0.04	0.04	0	0	0	0
VH 30*40	A615Gr60	A615Gr60	0.025	0.025	0	0	0	0
VH 60*40	A615Gr60	A615Gr60	0.04	0.04	0	0	0	0
VH 70*40	A615Gr60	A615Gr60	0.04	0.04	0	0	0	0
VH 80*25	A615Gr60	A615Gr60	0.04	0.04	0	0	0	0
VH 80*40	A615Gr60	A615Gr60	0.04	0.04	0	0	0	0
VH 80*50	A615Gr60	A615Gr60	0.04	0.04	0	0	0	0

TABLE: Frame Section Properties 09 - FCC U Girder

SectionName	B1	B2	B3	B4	B5	B6	D1	D2	D3	D4	D5	D6	D7
Text	m	m	m	m	m	m	m	m	m	m	m	m	m
CNH 30*60	0.6	0.6	0.6	0.15	0	0	0.6	0.15	0	0	0	0	0
CNH 40*60	0.7	0.7	0.7	0.15	0	0	0.6	0.15	0	0	0	0	0
CNH 50*60	0.8	0.8	0.8	0.15	0	0	0.6	0.15	0	0	0	0	0
CNH 60*60	0.9	0.9	0.9	0.15	0	0	0.6	0.15	0	0	0	0	0
CNH 70*60	1	1	1	0.15	0	0	0.6	0.15	0	0	0	0	0
CNH 80*60	1.1	1.1	1.1	0.15	0	0	0.6	0.15	0	0	0	0	0
CNH 90*60	1.2	1.2	1.2	0.15	0	0	0.6	0.15	0	0	0	0	0





Precast Concrete U Girder

Section Name: CH-4790

Modify/Show Notes...

Section Notes

Section Dimensions

B1	0.7	D1	0.6
B2	0.7	D2	0.15
B3	0.15	D3	0
B4	0	D4	0
B5	0	D5	0
B6	0	D6	0
		D7	0

Section

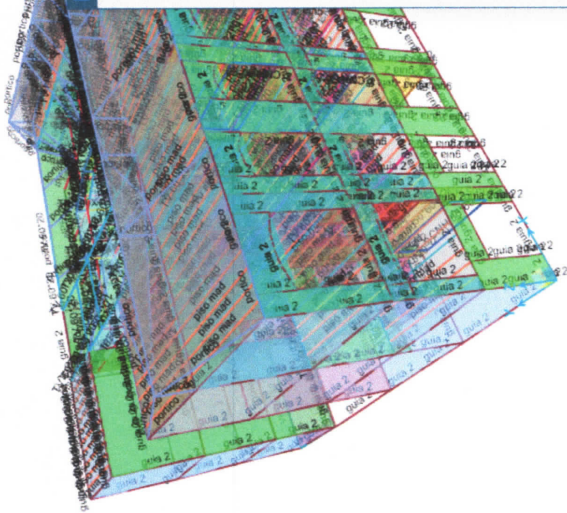
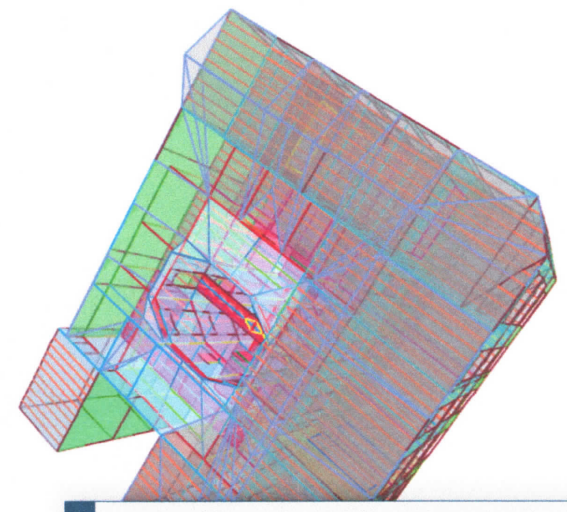
Properties: 3000Psi

Section Properties...

Time Dependent Properties...

Set Modifiers...

Cancel



S Precast Concrete U Girder

Section Name: CHN 50*60
 Section Notes: Modify/Show Notes...

Section Dimensions

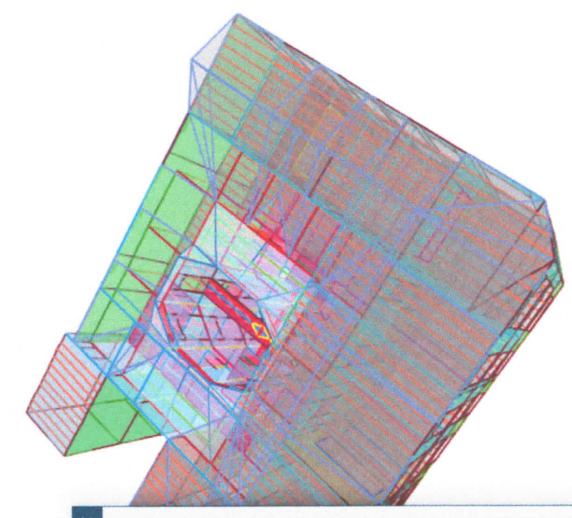
B1	0.8	D1	0.6
B2	0.8	D2	0.15
B3	0.15	D3	0
B4	0	D4	0
B5	0	D5	0
B6	0	D6	0
		D7	0

U Girder

Properties: 3000PSI

Section Properties...
 Time Dependent Properties...
 Set Modifiers...

Cancel



S Precast Concrete U Girder

Section Name: CHH 70*90

Section Notes: Modify/Show Notes...

Section Dimensions

B1	1	D1	0.6
B2	1	D2	0.15
B3	0.15	D3	0
B4	0	D4	0
B5	0	D5	0
B6	0	D6	0
		D7	0

Properties: 3000 FPH

Section Properties...

Time Dependent Properties...

Set Modifiers...

Cancel

